

## Test Report

No.: EKR23300045

Date: 07-Mar-2023

Page: 1 of 12

SUMITOMO BAKELITE CO., LTD.

40-1 AZA-MIZUMACHI, OHOAZA-KAMIZAKAI, NOGATA-CITY, FUKUOKA, 822-0006, JAPAN

**The following sample(s) was/were submitted and identified by the applicant as:**

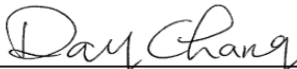
Sample Submitted By : SUMITOMO BAKELITE CO., LTD.  
Sample Name : EPOXY MOLDING COMPOUND  
Style/Item No. : EME-G620 TYPE A  
Order No. : HIN-52-982

=====  
Sample Receiving Date : 01-Mar-2023  
Testing Period : 01-Mar-2023 to 07-Mar-2023

**Test Requested** : (1) As specified by client, with reference to RoHS 2011/65/EU Annex II and amending Directive (EU) 2015/863 to determine Cadmium, Lead, Mercury, Cr(VI), PBBs, PBDEs, DBP, BBP, DEHP, DIBP contents in the submitted sample(s).  
(2) Please refer to next pages for the other item(s).

**Test Results** : Please refer to following pages.

**Conclusion** : (1) Based on the performed tests on submitted sample(s), the test results of Cadmium, Lead, Mercury, Cr(VI), PBBs, PBDEs, DBP, BBP, DEHP, DIBP comply with the limits as set by RoHS Directive (EU) 2015/863 amending Annex II to Directive 2011/65/EU.

  
Ray Chang, Ph.D./Department Manager  
Signed for and on behalf of  
SGS TAIWAN LTD.  
Chemical Laboratory-Kaohsiung



PIN CODE: 66EB03B2

This document is issued by the Company subject to its General Conditions of Service printed overleaf, available on request or accessible at <https://www.sgs.com.tw/terms-of-service> and, for electronic format documents, subject to Terms and Conditions for Electronic Documents at <https://www.sgs.com.tw/terms-of-service>. Attention is drawn to the limitation of liability, indemnification and jurisdiction issues defined therein. Any holder of this document is advised that information contained hereon reflects the Company's findings at the time of its intervention only and within the limits of client's instruction, if any. The Company's sole responsibility is to its Client and this document does not exonerate parties to a transaction from exercising all their rights and obligations under the transaction documents. This document cannot be reproduced, except in full, without prior written approval of the Company. Any unauthorized alteration, forgery or falsification of the content or appearance of this document is unlawful and offenders may be prosecuted to the fullest extent of the law. Unless otherwise stated the results shown in this test report refer only to the sample(s) tested.

# Test Report

No.: EKR23300045

Date: 07-Mar-2023

Page: 2 of 12

SUMITOMO BAKELITE CO., LTD.

40-1 AZA-MIZUMACHI, OHOAZA-KAMIZAKAI, NOGATA-CITY, FUKUOKA, 822-0006, JAPAN

## TEST PART DESCRIPTION

No.1 : BLACK EPOXY MOLDING COMPOUND

## Test Result(s)

Test Item(s)	Method	Unit	MDL	Result	Limit
				No.1	
Cadmium (Cd)	With reference to IEC 62321-5: 2013, analysis was performed by ICP-OES.	mg/kg	2	n.d.	100
Lead (Pb)	With reference to IEC 62321-5: 2013, analysis was performed by ICP-OES.	mg/kg	2	n.d.	1000
Mercury (Hg)	With reference to IEC 62321-4: 2013+ AMD1: 2017, analysis was performed by ICP-OES.	mg/kg	2	n.d.	1000
Hexavalent Chromium Cr(VI)	With reference to IEC 62321-7-2: 2017, analysis was performed by UV-VIS.	mg/kg	8	n.d.	1000
Monobromobiphenyl	With reference to IEC 62321-6: 2015, analysis was performed by GC/MS.	mg/kg	5	n.d.	-
Dibromobiphenyl		mg/kg	5	n.d.	-
Tribromobiphenyl		mg/kg	5	n.d.	-
Tetrabromobiphenyl		mg/kg	5	n.d.	-
Pentabromobiphenyl		mg/kg	5	n.d.	-
Hexabromobiphenyl		mg/kg	5	n.d.	-
Heptabromobiphenyl		mg/kg	5	n.d.	-
Octabromobiphenyl		mg/kg	5	n.d.	-
Nonabromobiphenyl		mg/kg	5	n.d.	-
Decabromobiphenyl		mg/kg	5	n.d.	-
<b>Sum of PBBs</b>		mg/kg	-	n.d.	1000
Monobromodiphenyl ether		With reference to IEC 62321-6: 2015, analysis was performed by GC/MS.	mg/kg	5	n.d.
Dibromodiphenyl ether	mg/kg		5	n.d.	-
Tribromodiphenyl ether	mg/kg		5	n.d.	-
Tetrabromodiphenyl ether	mg/kg		5	n.d.	-
Pentabromodiphenyl ether	mg/kg		5	n.d.	-
Hexabromodiphenyl ether	mg/kg		5	n.d.	-
Heptabromodiphenyl ether	mg/kg		5	n.d.	-
Octabromodiphenyl ether	mg/kg		5	n.d.	-
Nonabromodiphenyl ether	mg/kg		5	n.d.	-
Decabromodiphenyl ether	mg/kg		5	n.d.	-
<b>Sum of PBDEs</b>	mg/kg		-	n.d.	1000

This document is issued by the Company subject to its General Conditions of Service printed overleaf, available on request or accessible at <https://www.sgs.com.tw/terms-of-service> and, for electronic format documents, subject to Terms and Conditions for Electronic Documents at <https://www.sgs.com.tw/terms-of-service>. Attention is drawn to the limitation of liability, indemnification and jurisdiction issues defined therein. Any holder of this document is advised that information contained hereon reflects the Company's findings at the time of its intervention only and within the limits of client's instruction, if any. The Company's sole responsibility is to its Client and this document does not exonerate parties to a transaction from exercising all their rights and obligations under the transaction documents. This document cannot be reproduced, except in full, without prior written approval of the Company. Any unauthorized alteration, forgery or falsification of the content or appearance of this document is unlawful and offenders may be prosecuted to the fullest extent of the law. Unless otherwise stated the results shown in this test report refer only to the sample(s) tested.

# Test Report

No.: EKR23300045

Date: 07-Mar-2023

Page: 3 of 12

SUMITOMO BAKELITE CO., LTD.

40-1 AZA-MIZUMACHI, OHOAZA-KAMIZAKAI, NOGATA-CITY, FUKUOKA, 822-0006, JAPAN

Test Item(s)	Method	Unit	MDL	Result	Limit
				No.1	
Phosphorus (P)	With reference to US EPA 3052: 1996, analysis was performed by ICP-OES.	mg/kg	2	154	-
Antimony (Sb) (CAS No.: 7440-36-0)	With reference to US EPA 3052: 1996, analysis was performed by ICP-OES.	mg/kg	2	n.d.	-
Hexabromocyclododecane (HBCDD) and all major diastereoisomers identified ( $\alpha$ -HBCDD, $\beta$ -HBCDD, $\gamma$ -HBCDD) (CAS No.: 25637-99-4, 3194-55-6 (134237-51-7, 134237-50-6, 134237-52-8))	With reference to IEC 62321: 2008, analysis was performed by GC/MS.	mg/kg	5	n.d.	-
Perfluorooctanoic acid (PFOA) and its salt (CAS No.: 335-67-1 and its salts)	With reference to CEN/TS 15968: 2010, analysis was performed by LC/MS/MS.	mg/kg	0.01	n.d.	-
PFOS and its salts (CAS No.: 1763-23-1 and its salts)	With reference to CEN/TS 15968: 2010, analysis was performed by LC/MS/MS.	mg/kg	0.01	n.d.	-
Fluorine (F) (CAS No.: 14762-94-8)	With reference to BS EN 14582: 2016, analysis was performed by IC.	mg/kg	50	n.d.	-
Chlorine (Cl) (CAS No.: 22537-15-1)		mg/kg	50	n.d.	-
Bromine (Br) (CAS No.: 10097-32-2)		mg/kg	50	n.d.	-
Iodine (I) (CAS No.: 14362-44-8)		mg/kg	50	n.d.	-
Dibutyl phthalate (DBP)	With reference to IEC 62321-8: 2017, analysis was performed by GC/MS.	mg/kg	50	n.d.	1000
Di-(2-ethylhexyl) phthalate (DEHP)	With reference to IEC 62321-8: 2017, analysis was performed by GC/MS.	mg/kg	50	n.d.	1000
Diisobutyl phthalate (DIBP)	With reference to IEC 62321-8: 2017, analysis was performed by GC/MS.	mg/kg	50	n.d.	1000
Butyl benzyl phthalate (BBP)	With reference to IEC 62321-8: 2017, analysis was performed by GC/MS.	mg/kg	50	n.d.	1000
Diisopentyl phthalate (DIPP) (CAS No.: 605-50-5)	With reference to IEC 62321-8: 2017, analysis was performed by GC/MS.	mg/kg	50	n.d.	-
Diisononyl phthalate (DINP) (CAS No.: 28553-12-0, 68515-48-0)	With reference to IEC 62321-8: 2017, analysis was performed by GC/MS.	mg/kg	50	n.d.	-
Di-n-octyl phthalate (DNOP) (CAS No.: 117-84-0)	With reference to IEC 62321-8: 2017, analysis was performed by GC/MS.	mg/kg	50	n.d.	-
Di-n-hexyl phthalate (DNHP) (CAS No.: 84-75-3)	With reference to IEC 62321-8: 2017, analysis was performed by GC/MS.	mg/kg	50	n.d.	-

This document is issued by the Company subject to its General Conditions of Service printed overleaf, available on request or accessible at <https://www.sgs.com.tw/terms-of-service> and, for electronic format documents, subject to Terms and Conditions for Electronic Documents at <https://www.sgs.com.tw/terms-of-service>. Attention is drawn to the limitation of liability, indemnification and jurisdiction issues defined therein. Any holder of this document is advised that information contained hereon reflects the Company's findings at the time of its intervention only and within the limits of client's instruction, if any. The Company's sole responsibility is to its Client and this document does not exonerate parties to a transaction from exercising all their rights and obligations under the transaction documents. This document cannot be reproduced, except in full, without prior written approval of the Company. Any unauthorized alteration, forgery or falsification of the content or appearance of this document is unlawful and offenders may be prosecuted to the fullest extent of the law. Unless otherwise stated the results shown in this test report refer only to the sample(s) tested.

# Test Report

No.: EKR23300045

Date: 07-Mar-2023

Page: 4 of 12

SUMITOMO BAKELITE CO., LTD.

40-1 AZA-MIZUMACHI, OHOAZA-KAMIZAKAI, NOGATA-CITY, FUKUOKA, 822-0006, JAPAN

Test Item(s)	Method	Unit	MDL	Result	Limit
				No.1	
Bis-(2-methoxyethyl) phthalate (DMEP) (CAS No.: 117-82-8)	With reference to IEC 62321-8: 2017, analysis was performed by GC/MS.	mg/kg	50	n.d.	-
Di-pentyl phthalate (DPP) (CAS No.: 131-18-0)	With reference to IEC 62321-8: 2017, analysis was performed by GC/MS.	mg/kg	50	n.d.	-
1,2-Benzenedicarboxylic acid, di-C6-8-branched alkyl esters, C7-rich (DIHP) (CAS No.: 71888-89-6)	With reference to IEC 62321-8: 2017, analysis was performed by GC/MS.	mg/kg	50	n.d.	-
1,2-Benzenedicarboxylic acid, di-C7-11-branched and linear alkyl esters (DHNU) (CAS No.: 68515-42-4)	With reference to IEC 62321-8: 2017, analysis was performed by GC/MS.	mg/kg	50	n.d.	-
Diisodecyl phthalate (DIDP) (CAS No.: 26761-40-0, 68515-49-1)	With reference to IEC 62321-8: 2017, analysis was performed by GC/MS.	mg/kg	50	n.d.	-

## Note :

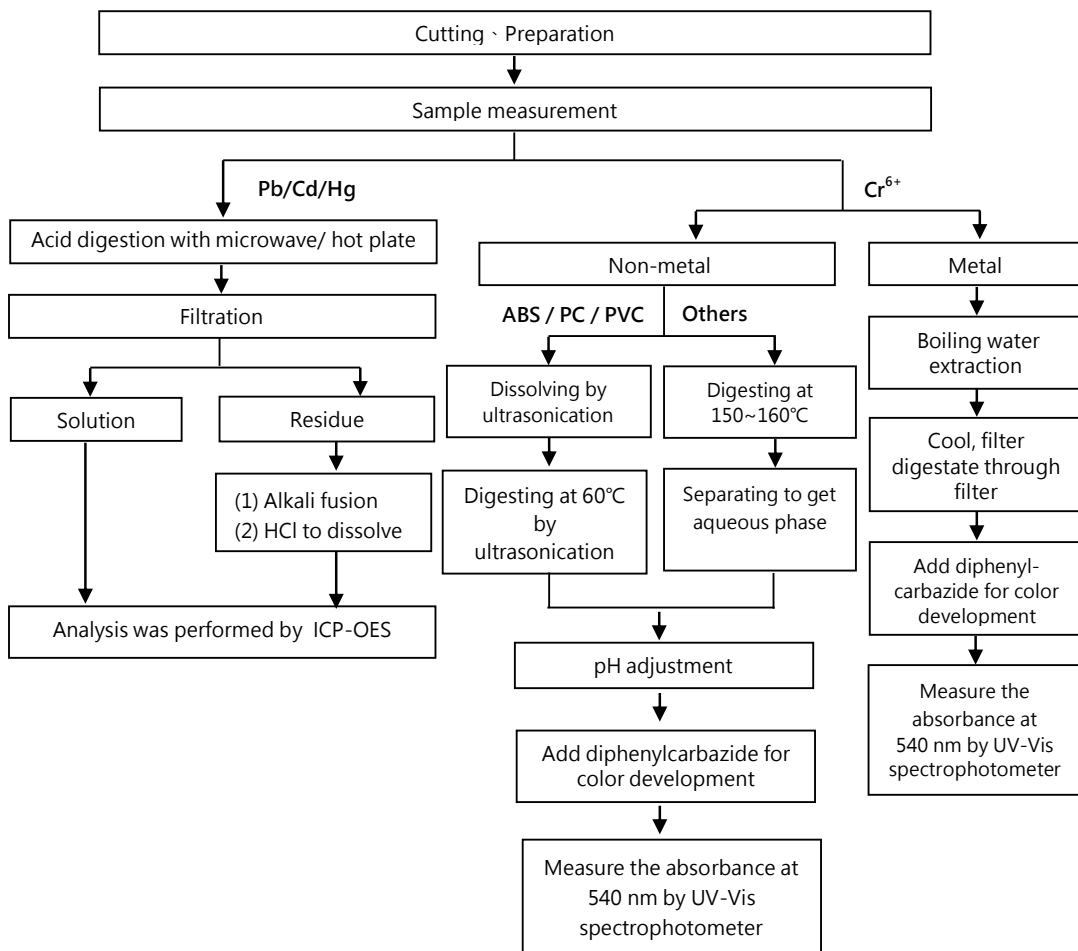
1. mg/kg = ppm ; 0.1wt% = 0.1% = 1000ppm
2. MDL = Method Detection Limit
3. n.d. = Not Detected ( Less than MDL)
4. "-" = Not Regulated
5. PFOS and its salts including :  
CAS No.: 1763-23-1, 2795-39-3, 29457-72-5, 29081-56-9, 70225-14-8, 56773-42-3, 251099-16-8, 307-35-7, 91036-71-4, 4021-47-0 and others.
6. PFOA and its salts including :  
CAS No.: 335-67-1, 335-95-5, 2395-00-8, 335-93-3, 335-66-0, 3825-26-1 and others.
7. Unless otherwise stated , the decision rule for conformity reporting is based on Binary Statement for Simple Acceptance Rule (w=0) stated in ILAC-G8:09/2019. According to this rule, the judgement of conformity is based on the comparing test results with limits.

This document is issued by the Company subject to its General Conditions of Service printed overleaf, available on request or accessible at <https://www.sgs.com.tw/terms-of-service> and, for electronic format documents, subject to Terms and Conditions for Electronic Documents at <https://www.sgs.com.tw/terms-of-service>. Attention is drawn to the limitation of liability, indemnification and jurisdiction issues defined therein. Any holder of this document is advised that information contained hereon reflects the Company's findings at the time of its intervention only and within the limits of client's instruction, if any. The Company's sole responsibility is to its Client and this document does not exonerate parties to a transaction from exercising all their rights and obligations under the transaction documents. This document cannot be reproduced, except in full, without prior written approval of the Company. Any unauthorized alteration, forgery or falsification of the content or appearance of this document is unlawful and offenders may be prosecuted to the fullest extent of the law. Unless otherwise stated the results shown in this test report refer only to the sample(s) tested.

## Analytical flow chart of heavy metal

These samples were dissolved totally by pre-conditioning method according to below flow chart.

( Cr<sup>6+</sup> test method excluded )

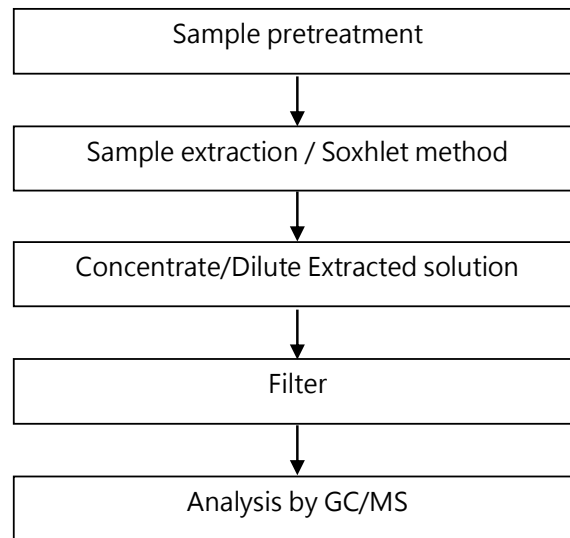


This document is issued by the Company subject to its General Conditions of Service printed overleaf, available on request or accessible at <https://www.sgs.com.tw/terms-of-service> and, for electronic format documents, subject to Terms and Conditions for Electronic Documents at <https://www.sgs.com.tw/terms-of-service>. Attention is drawn to the limitation of liability, indemnification and jurisdiction issues defined therein. Any holder of this document is advised that information contained hereon reflects the Company's findings at the time of its intervention only and within the limits of client's instruction, if any. The Company's sole responsibility is to its Client and this document does not exonerate parties to a transaction from exercising all their rights and obligations under the transaction documents. This document cannot be reproduced, except in full, without prior written approval of the Company. Any unauthorized alteration, forgery or falsification of the content or appearance of this document is unlawful and offenders may be prosecuted to the fullest extent of the law. Unless otherwise stated the results shown in this test report refer only to the sample(s) tested.

SUMITOMO BAKELITE CO., LTD.

40-1 AZA-MIZUMACHI, OHOAZA-KAMIZAKAI, NOGATA-CITY, FUKUOKA, 822-0006, JAPAN

### PBB/PBDE analytical FLOW CHART



This document is issued by the Company subject to its General Conditions of Service printed overleaf, available on request or accessible at <https://www.sgs.com.tw/terms-of-service> and, for electronic format documents, subject to Terms and Conditions for Electronic Documents at <https://www.sgs.com.tw/terms-of-service>. Attention is drawn to the limitation of liability, indemnification and jurisdiction issues defined therein. Any holder of this document is advised that information contained hereon reflects the Company's findings at the time of its intervention only and within the limits of client's instruction, if any. The Company's sole responsibility is to its Client and this document does not exonerate parties to a transaction from exercising all their rights and obligations under the transaction documents. This document cannot be reproduced, except in full, without prior written approval of the Company. Any unauthorized alteration, forgery or falsification of the content or appearance of this document is unlawful and offenders may be prosecuted to the fullest extent of the law. Unless otherwise stated the results shown in this test report refer only to the sample(s) tested.

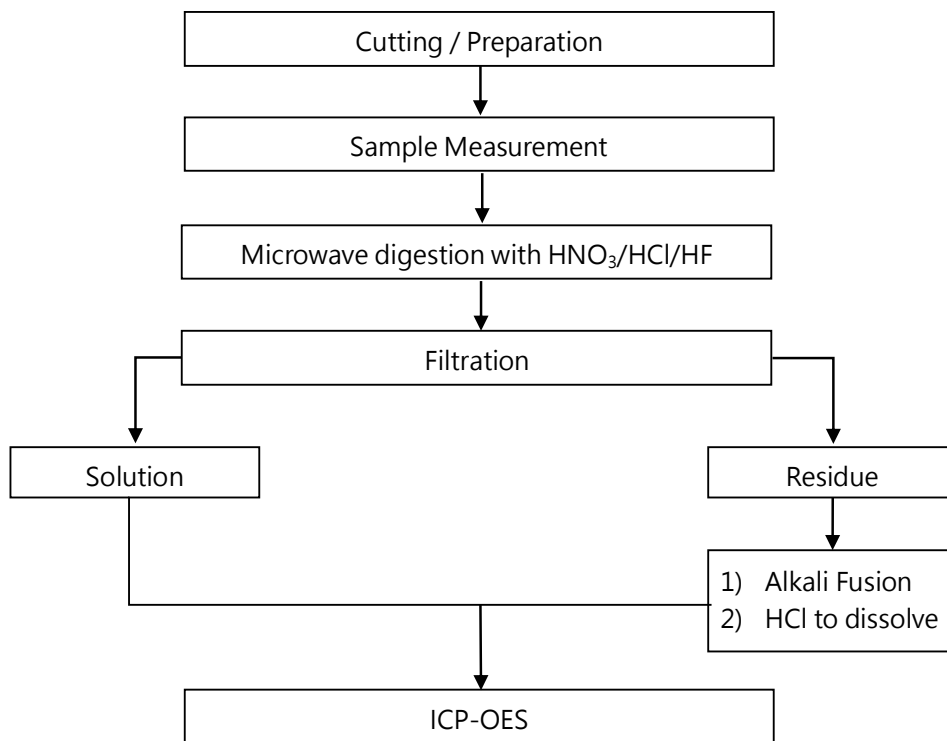
SUMITOMO BAKELITE CO., LTD.

40-1 AZA-MIZUMACHI, OHOAZA-KAMIZAKAI, NOGATA-CITY, FUKUOKA, 822-0006, JAPAN

### Analytical flow chart of Elements (Heavy Metal included)

These samples were dissolved totally by pre-conditioning method according to below flow chart.

【Reference method : US EPA 3051A 、 US EPA 3052】



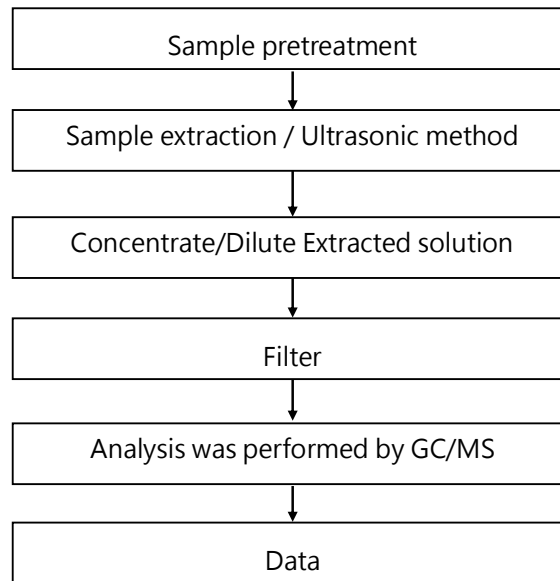
\* US EPA 3051A method does not add HF.

This document is issued by the Company subject to its General Conditions of Service printed overleaf, available on request or accessible at <https://www.sgs.com.tw/terms-of-service> and, for electronic format documents, subject to Terms and Conditions for Electronic Documents at <https://www.sgs.com.tw/terms-of-service>. Attention is drawn to the limitation of liability, indemnification and jurisdiction issues defined therein. Any holder of this document is advised that information contained hereon reflects the Company's findings at the time of its intervention only and within the limits of client's instruction, if any. The Company's sole responsibility is to its Client and this document does not exonerate parties to a transaction from exercising all their rights and obligations under the transaction documents. This document cannot be reproduced, except in full, without prior written approval of the Company. Any unauthorized alteration, forgery or falsification of the content or appearance of this document is unlawful and offenders may be prosecuted to the fullest extent of the law. Unless otherwise stated the results shown in this test report refer only to the sample(s) tested.

SUMITOMO BAKELITE CO., LTD.

40-1 AZA-MIZUMACHI, OHOAZA-KAMIZAKAI, NOGATA-CITY, FUKUOKA, 822-0006, JAPAN

### Analytical flow chart - HBCDD



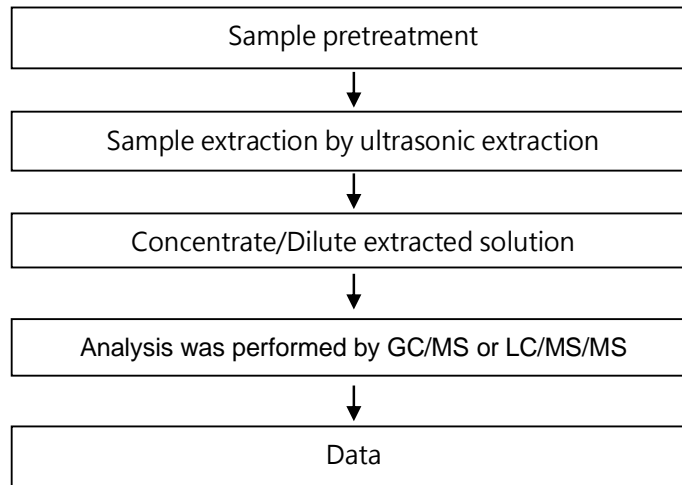
This document is issued by the Company subject to its General Conditions of Service printed overleaf, available on request or accessible at <https://www.sgs.com.tw/terms-of-service> and, for electronic format documents, subject to Terms and Conditions for Electronic Documents at <https://www.sgs.com.tw/terms-of-service>. Attention is drawn to the limitation of liability, indemnification and jurisdiction issues defined therein. Any holder of this document is advised that information contained hereon reflects the Company's findings at the time of its intervention only and within the limits of client's instruction, if any. The Company's sole responsibility is to its Client and this document does not exonerate parties to a transaction from exercising all their rights and obligations under the transaction documents. This document cannot be reproduced, except in full, without prior written approval of the Company. Any unauthorized alteration, forgery or falsification of the content or appearance of this document is unlawful and offenders may be prosecuted to the fullest extent of the law. Unless otherwise stated the results shown in this test report refer only to the sample(s) tested.



SUMITOMO BAKELITE CO., LTD.

40-1 AZA-MIZUMACHI, OHOAZA-KAMIZAKAI, NOGATA-CITY, FUKUOKA, 822-0006, JAPAN

### Analytical flow chart – PFAS (including PFOA/PFOS/its related compound, etc.)

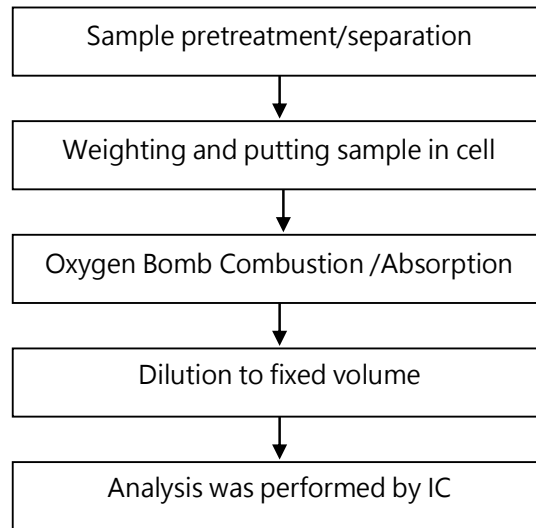


This document is issued by the Company subject to its General Conditions of Service printed overleaf, available on request or accessible at <https://www.sgs.com.tw/terms-of-service> and, for electronic format documents, subject to Terms and Conditions for Electronic Documents at <https://www.sgs.com.tw/terms-of-service>. Attention is drawn to the limitation of liability, indemnification and jurisdiction issues defined therein. Any holder of this document is advised that information contained hereon reflects the Company's findings at the time of its intervention only and within the limits of client's instruction, if any. The Company's sole responsibility is to its Client and this document does not exonerate parties to a transaction from exercising all their rights and obligations under the transaction documents. This document cannot be reproduced, except in full, without prior written approval of the Company. Any unauthorized alteration, forgery or falsification of the content or appearance of this document is unlawful and offenders may be prosecuted to the fullest extent of the law. Unless otherwise stated the results shown in this test report refer only to the sample(s) tested.

SUMITOMO BAKELITE CO., LTD.

40-1 AZA-MIZUMACHI, OHOAZA-KAMIZAKAI, NOGATA-CITY, FUKUOKA, 822-0006, JAPAN

### Analytical flow chart of Halogen



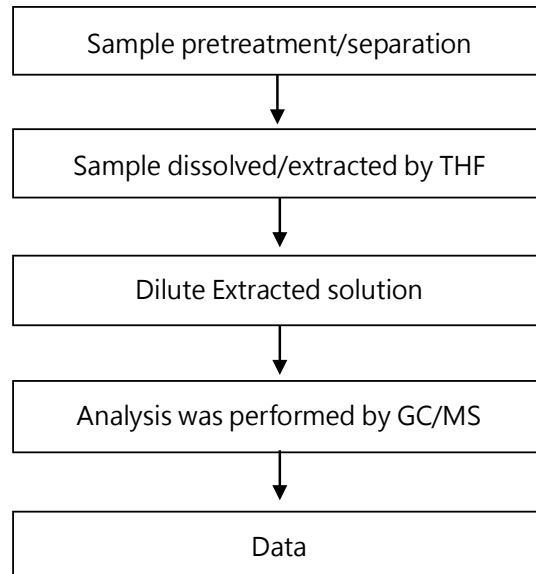
This document is issued by the Company subject to its General Conditions of Service printed overleaf, available on request or accessible at <https://www.sgs.com.tw/terms-of-service> and, for electronic format documents, subject to Terms and Conditions for Electronic Documents at <https://www.sgs.com.tw/terms-of-service>. Attention is drawn to the limitation of liability, indemnification and jurisdiction issues defined therein. Any holder of this document is advised that information contained hereon reflects the Company's findings at the time of its intervention only and within the limits of client's instruction, if any. The Company's sole responsibility is to its Client and this document does not exonerate parties to a transaction from exercising all their rights and obligations under the transaction documents. This document cannot be reproduced, except in full, without prior written approval of the Company. Any unauthorized alteration, forgery or falsification of the content or appearance of this document is unlawful and offenders may be prosecuted to the fullest extent of the law. Unless otherwise stated the results shown in this test report refer only to the sample(s) tested.

SUMITOMO BAKELITE CO., LTD.

40-1 AZA-MIZUMACHI, OHOAZA-KAMIZAKAI, NOGATA-CITY, FUKUOKA, 822-0006, JAPAN

### Analytical flow chart of phthalate content

【Test method: IEC 62321-8】



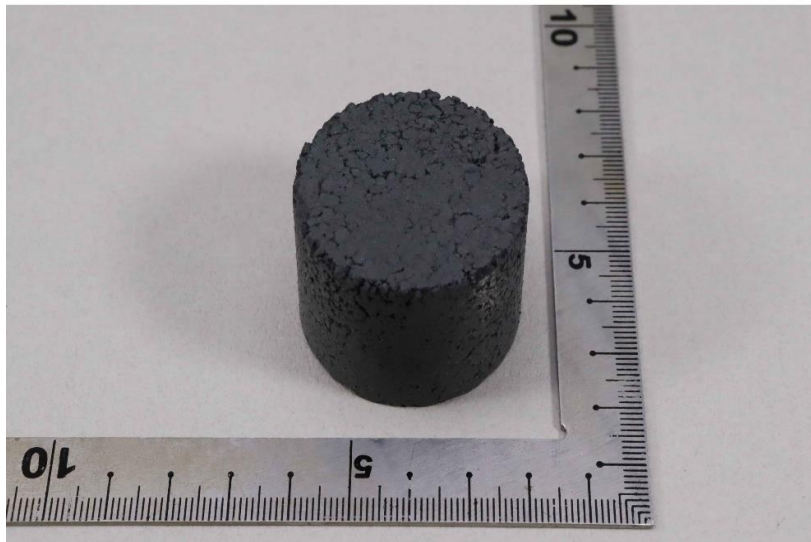
This document is issued by the Company subject to its General Conditions of Service printed overleaf, available on request or accessible at <https://www.sgs.com.tw/terms-of-service> and, for electronic format documents, subject to Terms and Conditions for Electronic Documents at <https://www.sgs.com.tw/terms-of-service>. Attention is drawn to the limitation of liability, indemnification and jurisdiction issues defined therein. Any holder of this document is advised that information contained hereon reflects the Company's findings at the time of its intervention only and within the limits of client's instruction, if any. The Company's sole responsibility is to its Client and this document does not exonerate parties to a transaction from exercising all their rights and obligations under the transaction documents. This document cannot be reproduced, except in full, without prior written approval of the Company. Any unauthorized alteration, forgery or falsification of the content or appearance of this document is unlawful and offenders may be prosecuted to the fullest extent of the law. Unless otherwise stated the results shown in this test report refer only to the sample(s) tested.

SUMITOMO BAKELITE CO., LTD.

40-1 AZA-MIZUMACHI, OHOAZA-KAMIZAKAI, NOGATA-CITY, FUKUOKA, 822-0006, JAPAN

\* The tested sample / part is marked by an arrow if it's shown on the photo. \*

### EKR23300045



\*\* End of Report \*\*

This document is issued by the Company subject to its General Conditions of Service printed overleaf, available on request or accessible at <https://www.sgs.com.tw/terms-of-service> and, for electronic format documents, subject to Terms and Conditions for Electronic Documents at <https://www.sgs.com.tw/terms-of-service>. Attention is drawn to the limitation of liability, indemnification and jurisdiction issues defined therein. Any holder of this document is advised that information contained hereon reflects the Company's findings at the time of its intervention only and within the limits of client's instruction, if any. The Company's sole responsibility is to its Client and this document does not exonerate parties to a transaction from exercising all their rights and obligations under the transaction documents. This document cannot be reproduced, except in full, without prior written approval of the Company. Any unauthorized alteration, forgery or falsification of the content or appearance of this document is unlawful and offenders may be prosecuted to the fullest extent of the law. Unless otherwise stated the results shown in this test report refer only to the sample(s) tested.