

NXP Semiconductors

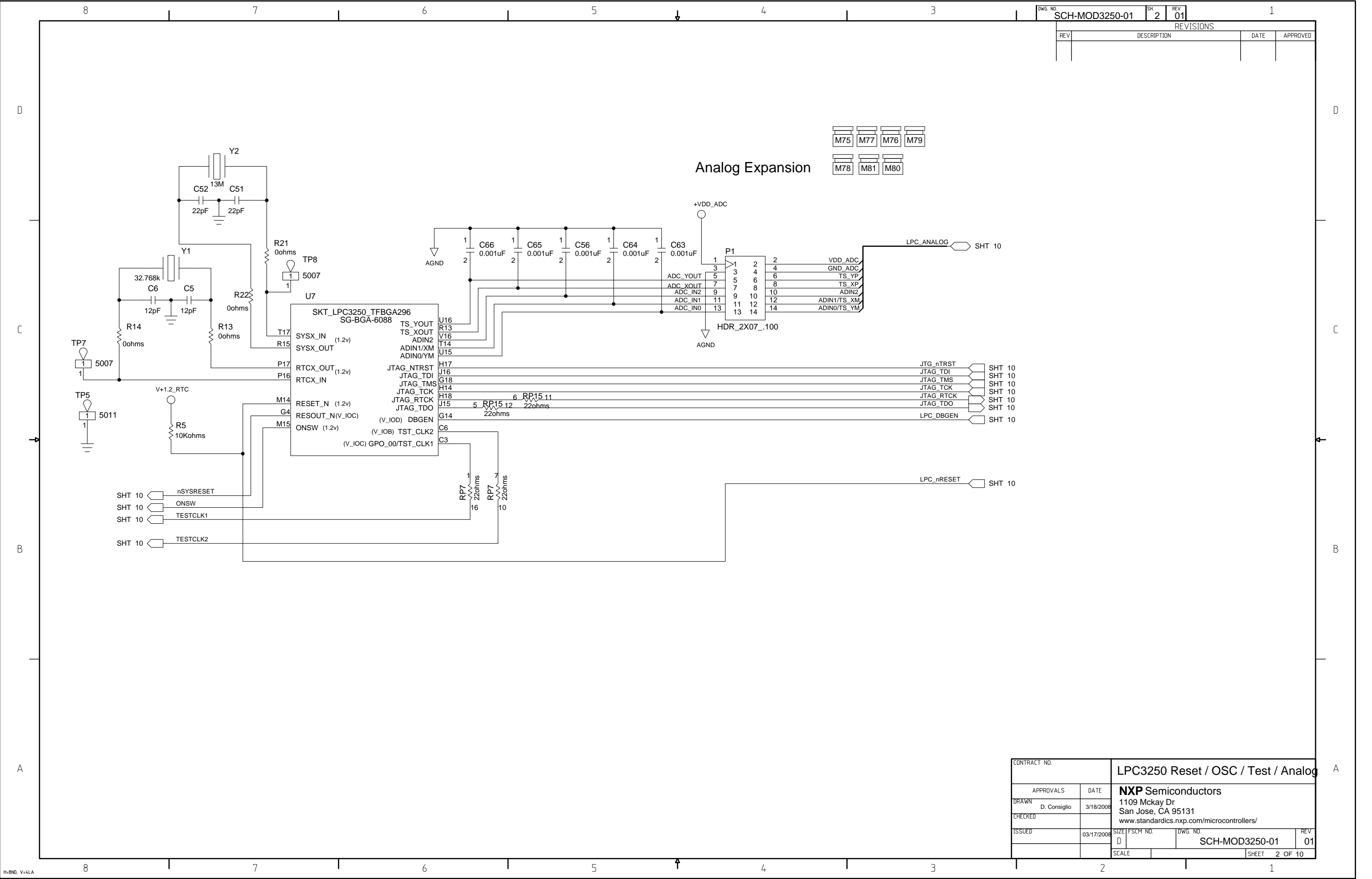
LPC3250 Module Board Schematics

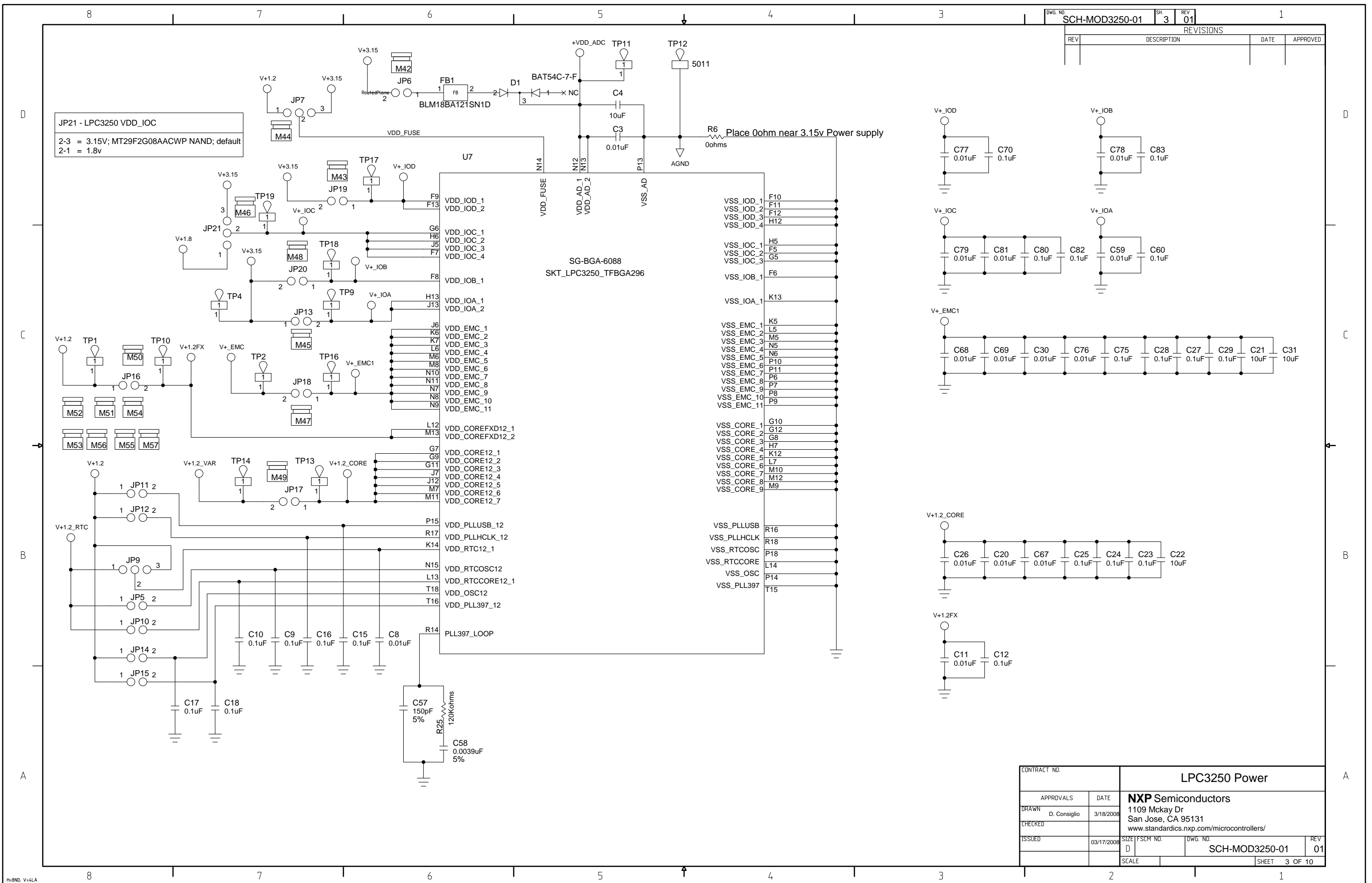
Mar. 17, 2008

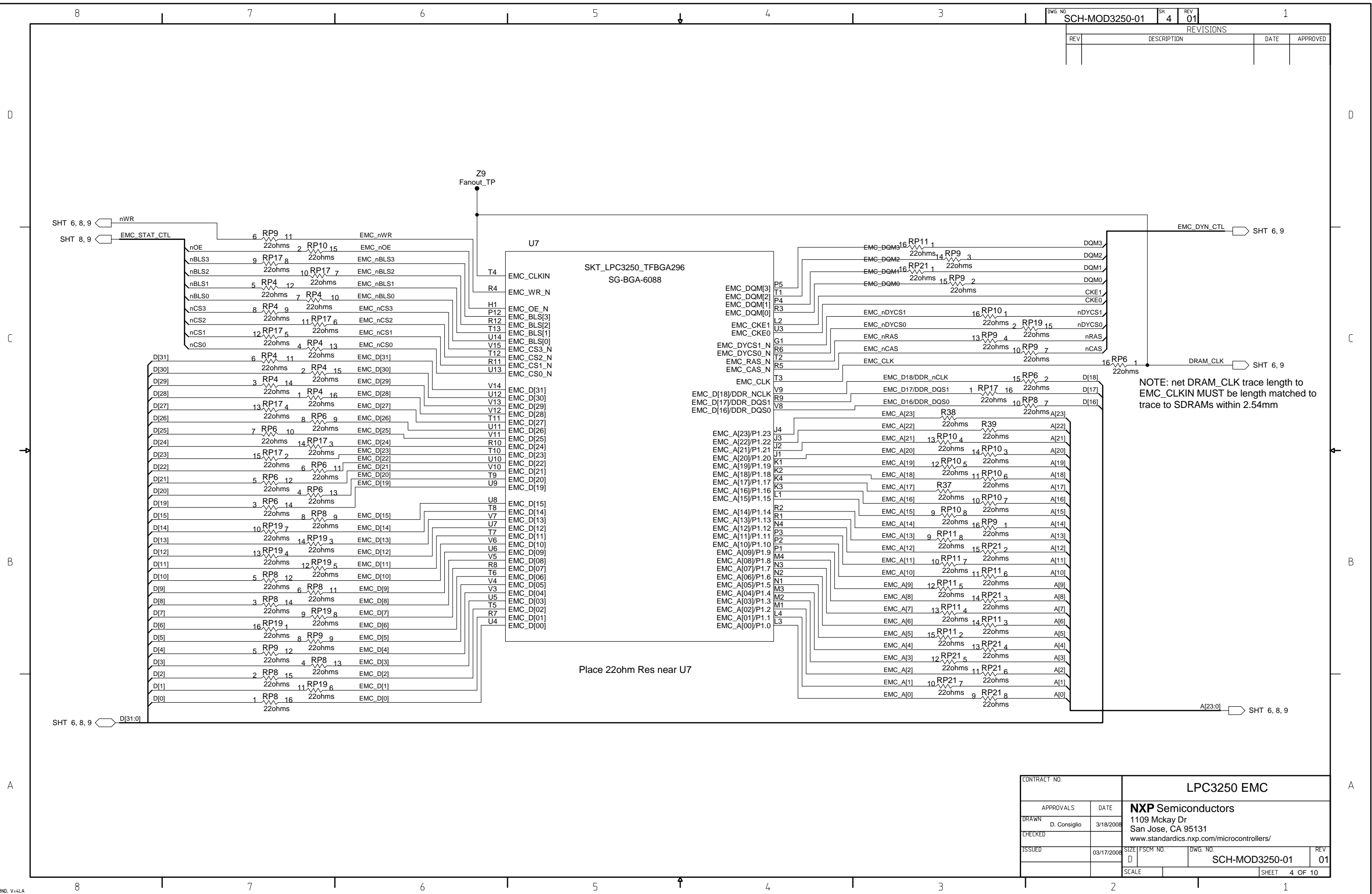
- Page 1 - Index
- Page 2 - LPC3250 Reset / OSC / Test / Analog
- Page 3 - LPC3250 Power
- Page 4 - LPC3250 EMC
- Page 5 - LPC3250 Peripherals
- Page 6 - SDR Memory
- Page 7 - Power Supplies
- Page 8 - Static Memory Bus Buffers
- Page 9 - Logic Analyzer Connectors
- Page 10 - Carrier Board Connectors

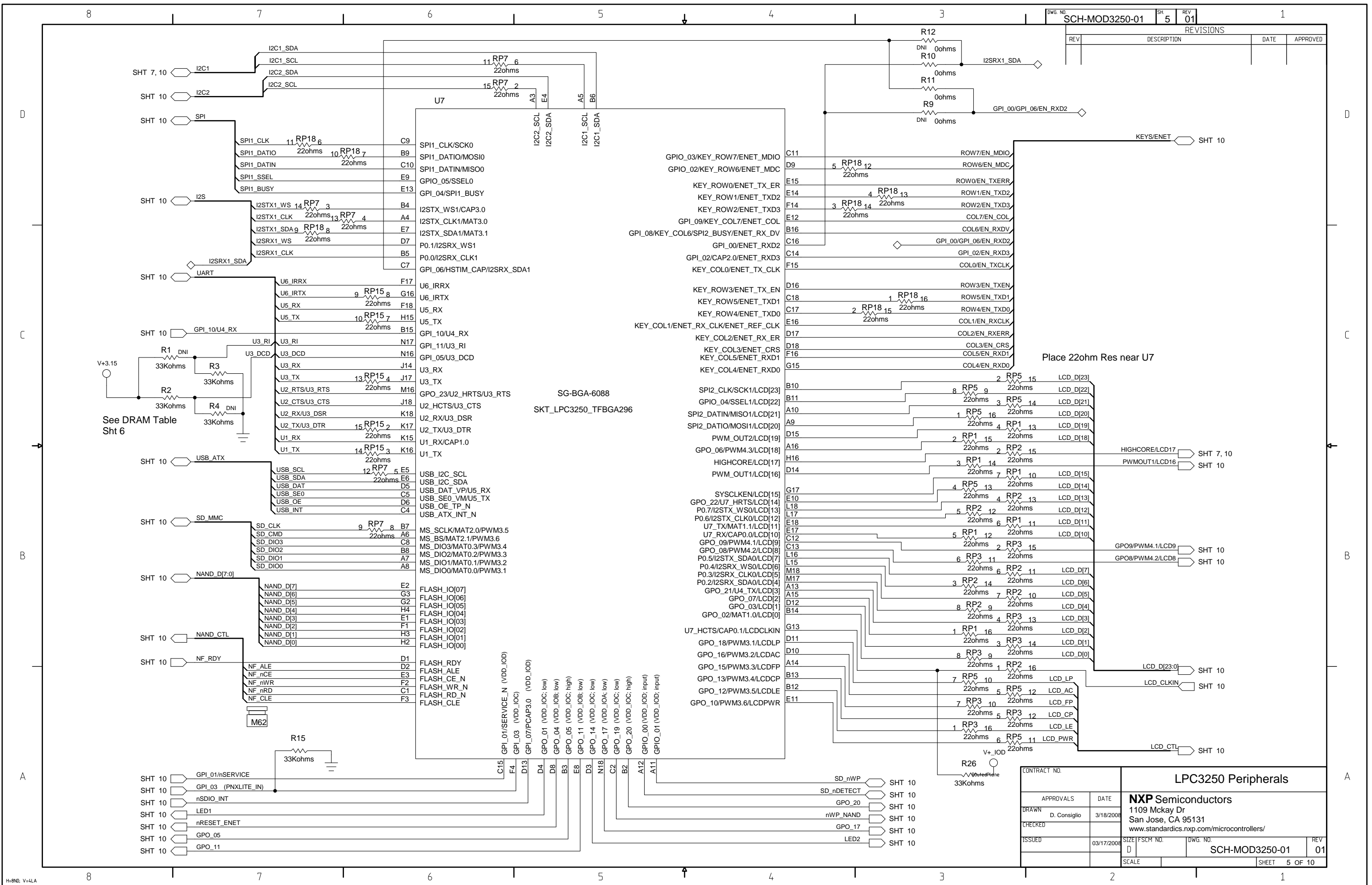
DWG. NO.		SCH-MOD3250-01	SH.	1	REV.	01
REVISIONS						
REV	DESCRIPTION				DATE	APPROVED
00	Release for review and Layout quotation				01/04/08	
01	Re-order REFDES; Release for Assembly				03/17/08	

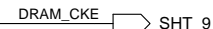
CONTRACT NO.		Sheet Index				
APPROVALS		DATE	NXP Semiconductors 1109 Mckay Dr San Jose, CA 95131 www.standardics.nxp.com/microcontrollers/			
DRAWN		D. Consiglio				
CHECKED						
ISSUED		03/17/2008	SIZE	FSCM NO.	DWG. NO.	REV
			D		SCH-MOD3250-01	01
			SCALE		SHEET	1 OF 10



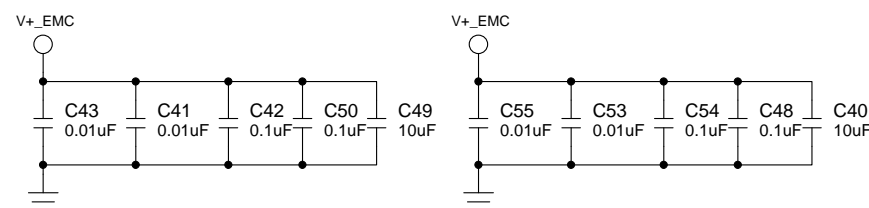








MEMORY	GPI_11 Mobile/STD	GPI_05 SDR/DDR
MT46H16M16LFCK	PU	PU
MT48LC16M16LFFG	PD	PU



CONTRACT NO.		SDR SDRAM Memory			
APPROVALS	DATE	NXP Semiconductors 1109 Mckay Dr San Jose, CA 95131 www.standardics.nxp.com/microcontrollers/			
DRAWN D. Consiglio	3/18/2008				
CHECKED					
ISSUED	03/17/2008	SIZE	FSCM NO.	DWG. NO.	REV
		D		SCH-MOD3250-01	01
		SCALE			SHEET 6 OF 10

