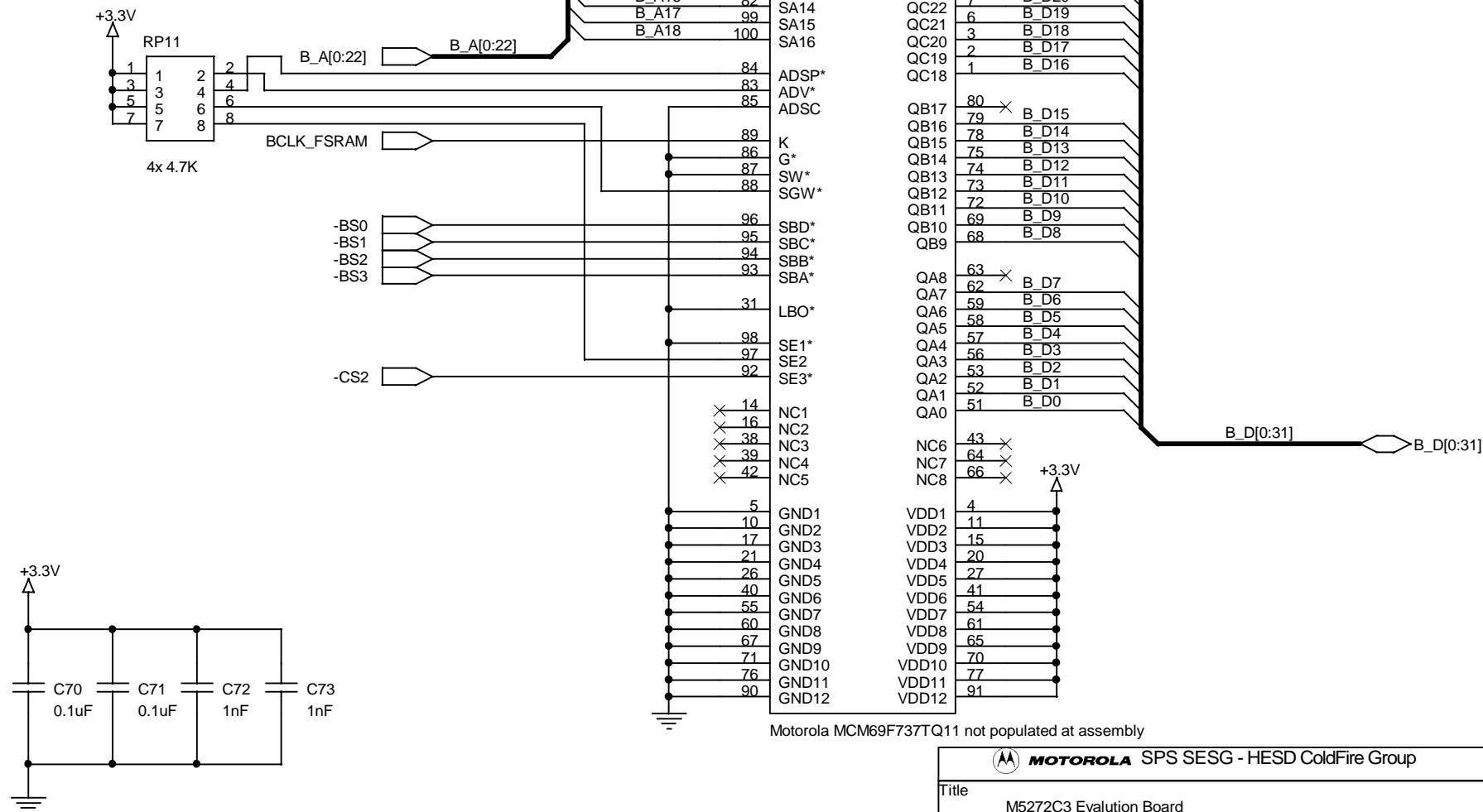
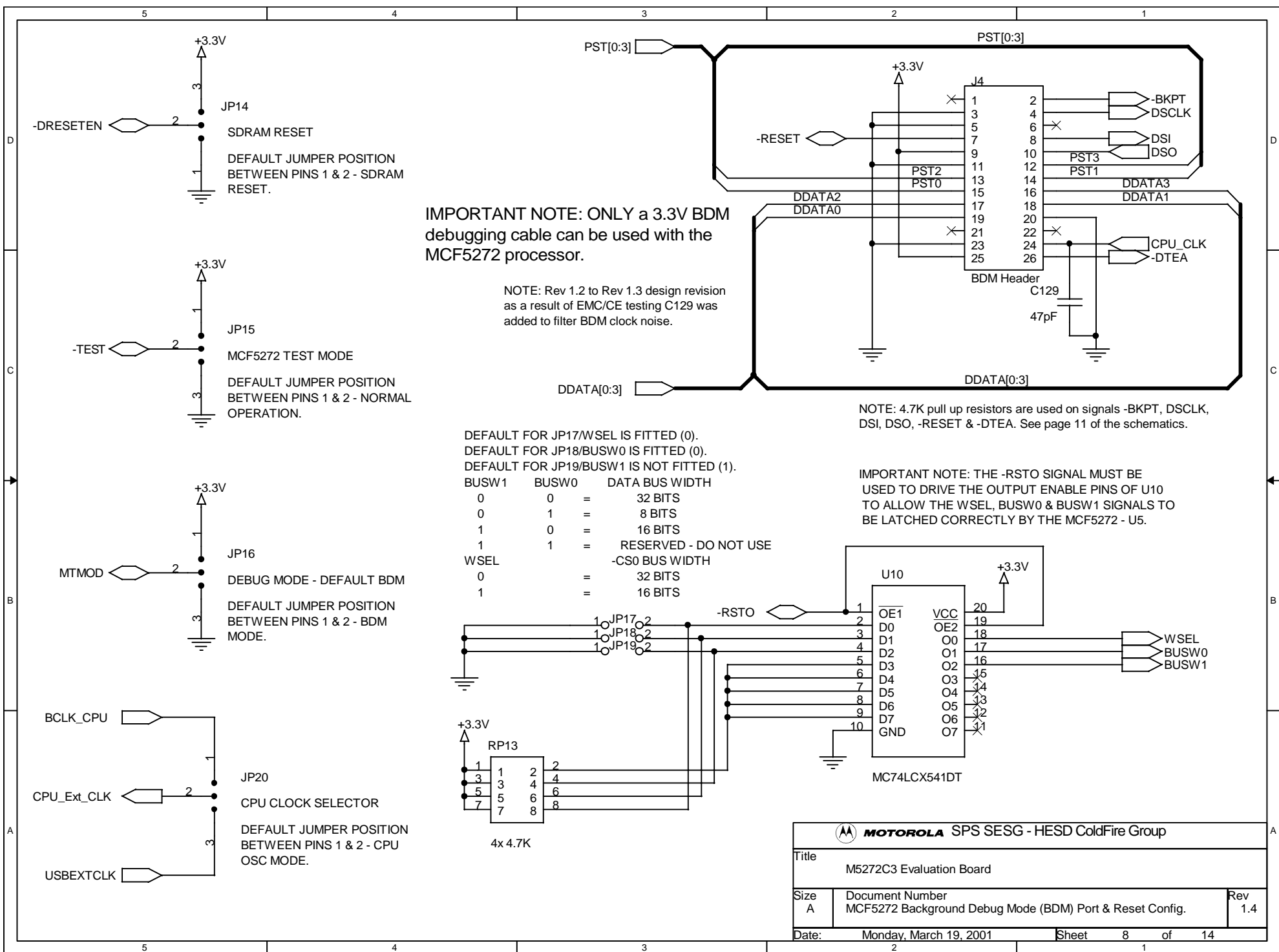


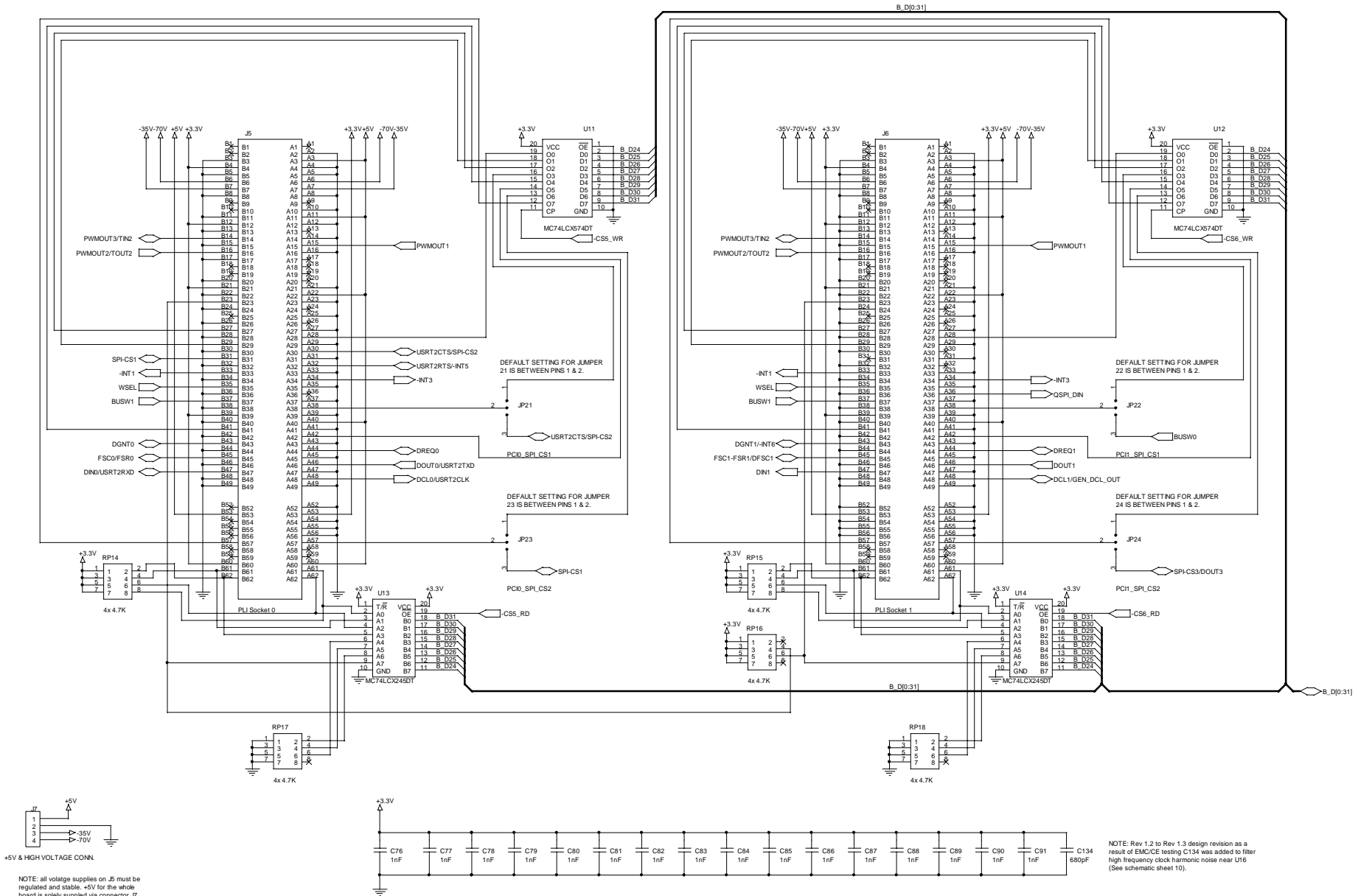
NOTE: Alternative FSRAM's with the same PCB footprint and functionality are :- Samsung K7B403625M, Cypress CY7C1345, IDT 71V3577 & Micron MT58L128L36F1.

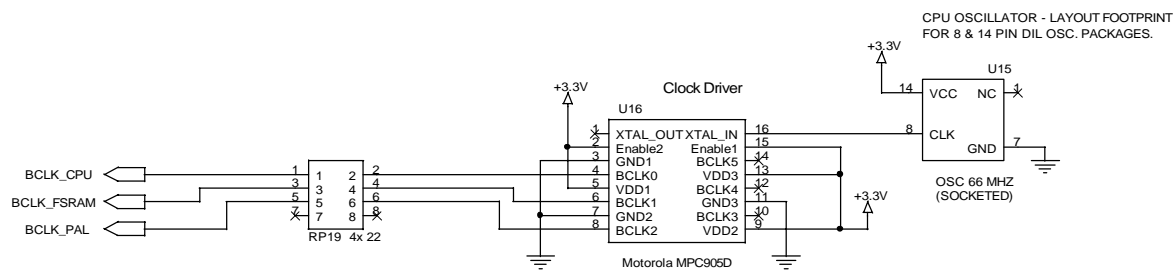
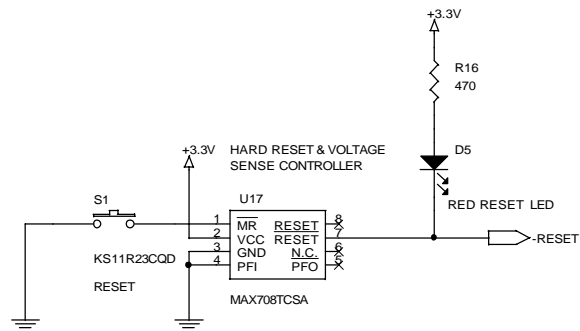


MOTOROLA SPS SESG - HESD ColdFire Group		
Title		
M5272C3 Evaluation Board		
Size	Document Number	Rev
A	MCF5272 - FSRAM	1.4
Date:	Monday, March 19, 2001	Sheet 7 of 14



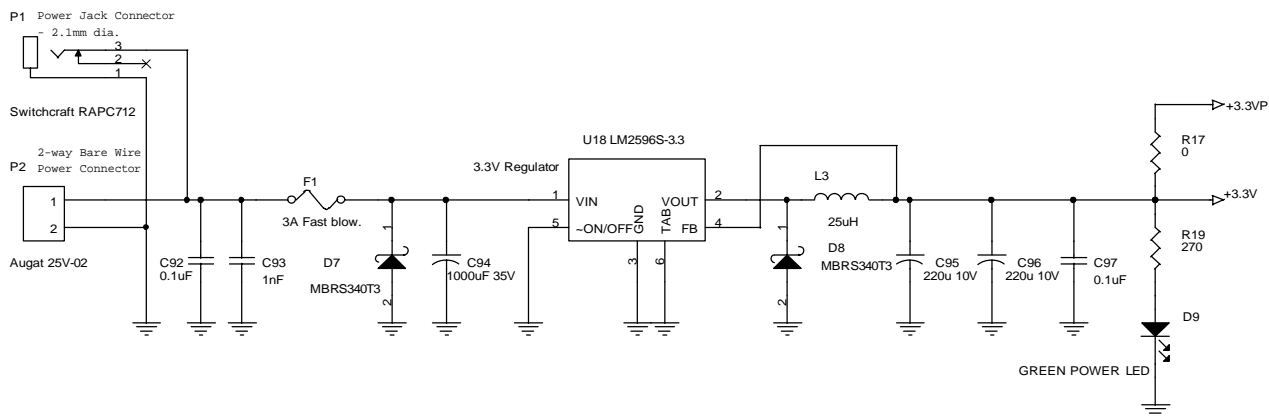
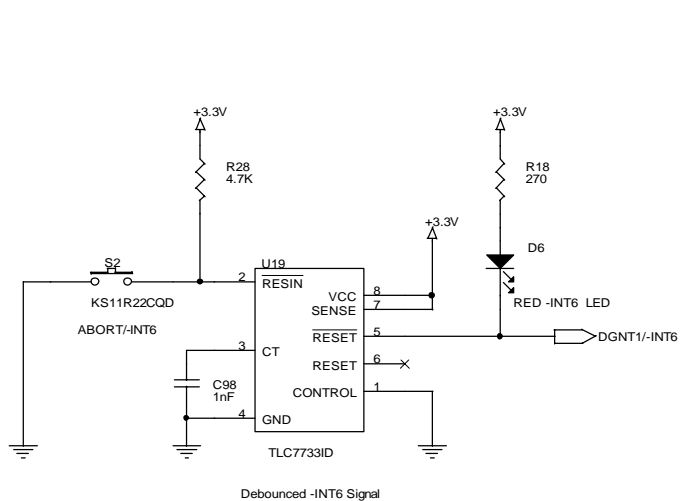
NOTE: PLI Sockets 0 & 1 are not populated during assembly.



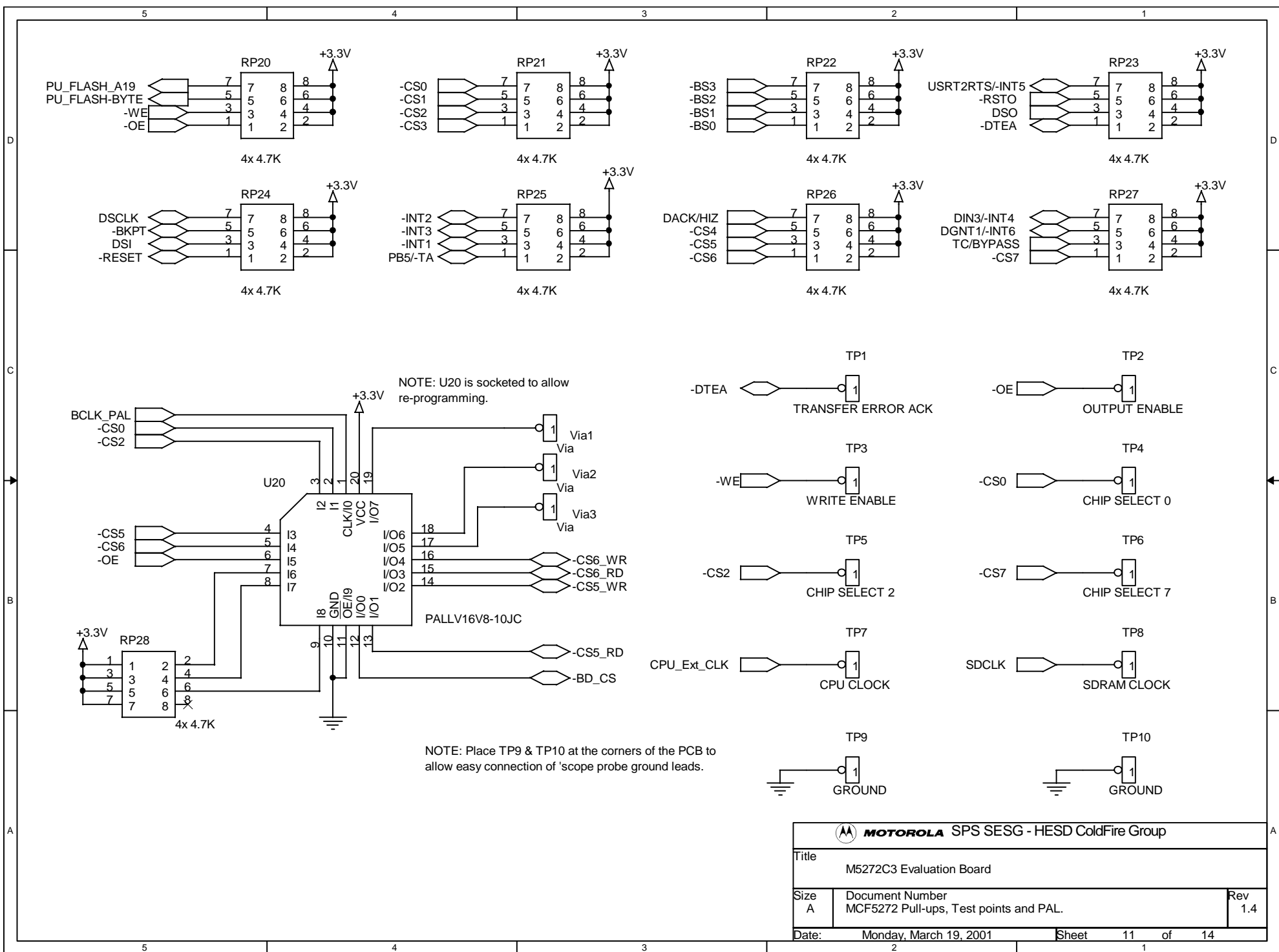


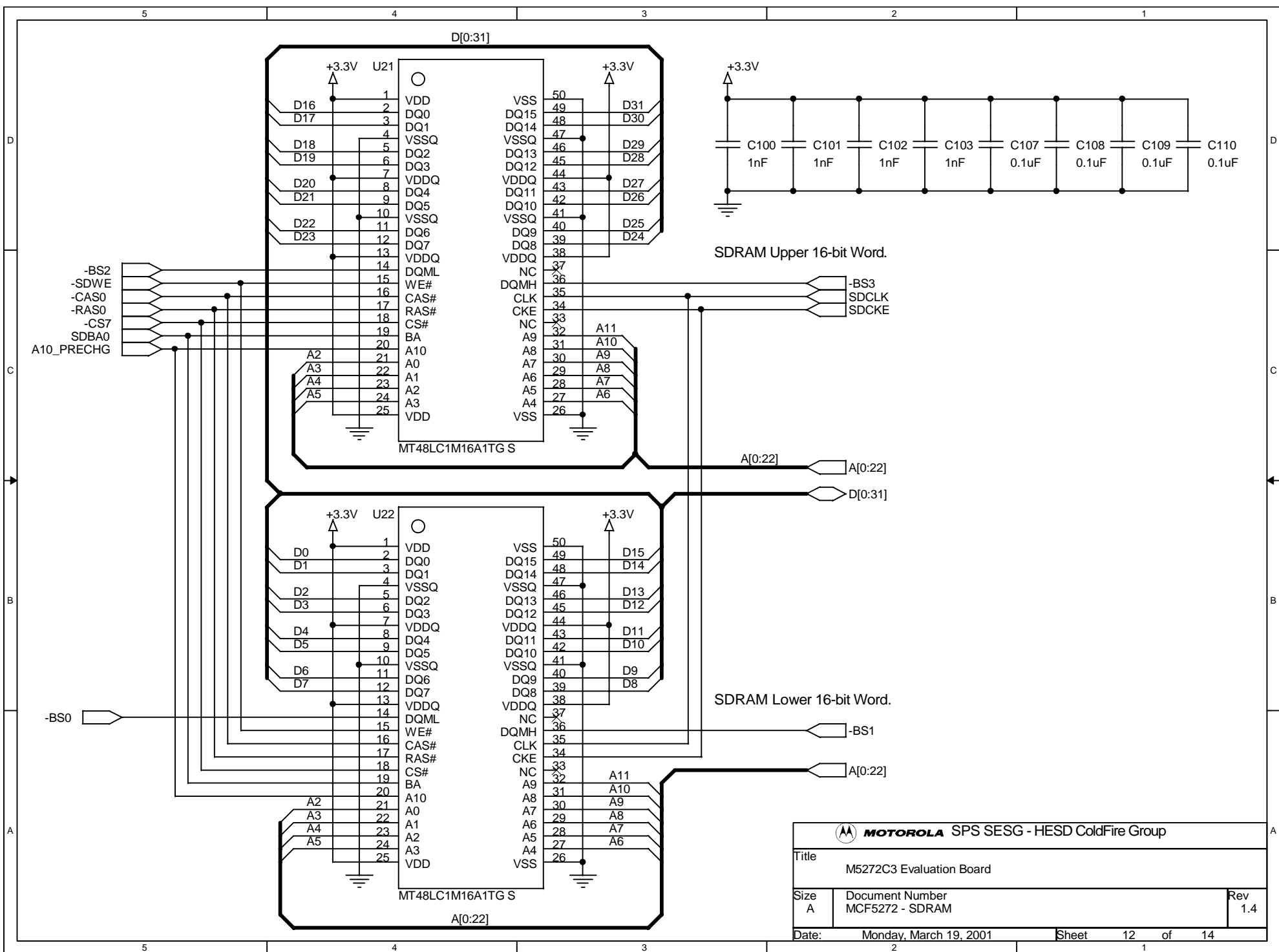
NOTE: minimise track lengths between U16 & RP19.

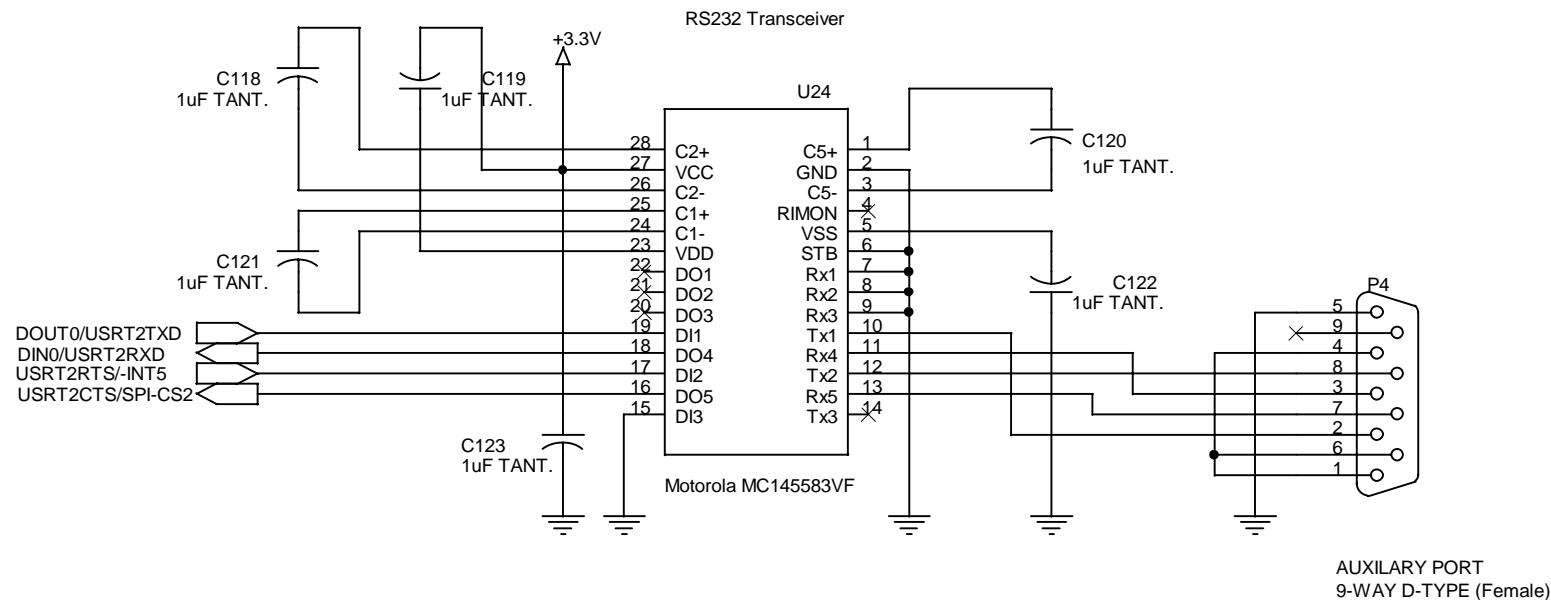
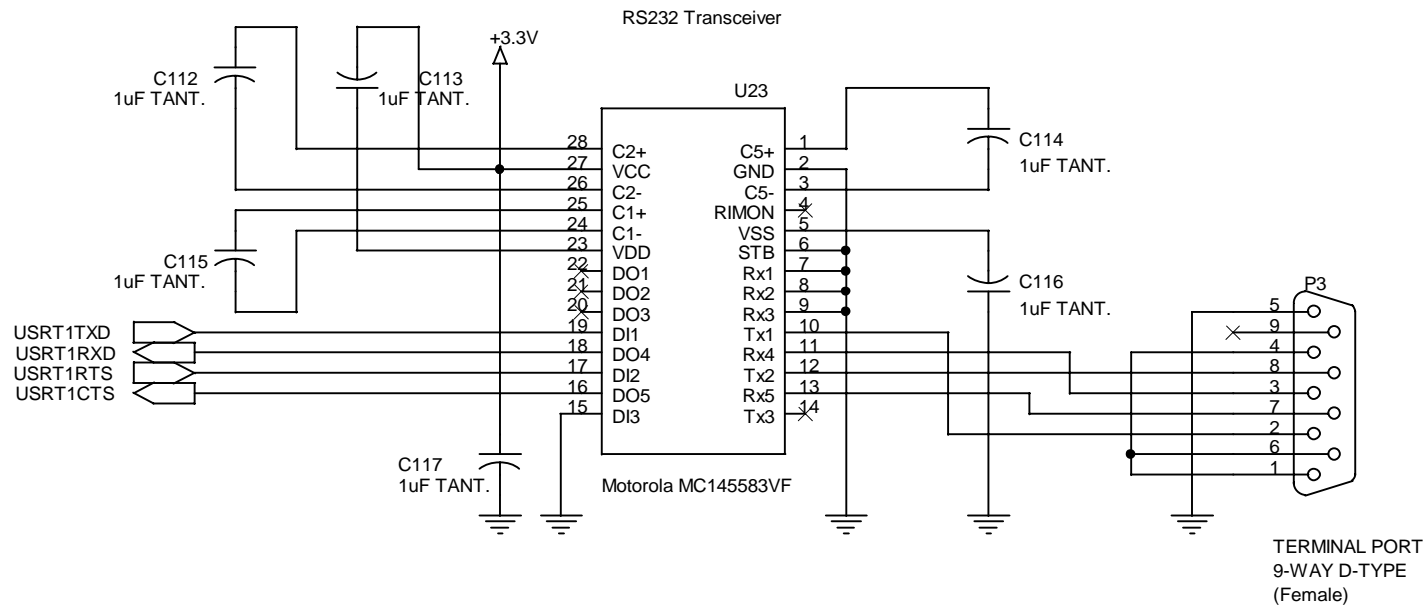
DC Voltage Input range +5V to +14V.




MOTOROLA SPS SESG - HESD ColdFire Group			
Title	M5272C3 Evaluation Board		
Size B	Document Number	Rev	
	MCF5272 - PSU, Reset & Clocks	1.4	
Date:	Monday, March 19, 2001	Sheet	10 of 14







 MOTOROLA SPS SESG - HESD ColdFire Group		
Title		
M5272C3 Evaluation Board		
Size	Document Number	Rev
A	MCF5272 - Serial Ports	1.4
Date: Monday, March 19, 2001		
Sheet 13 of 14		

