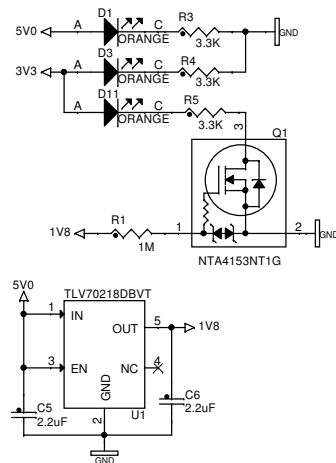
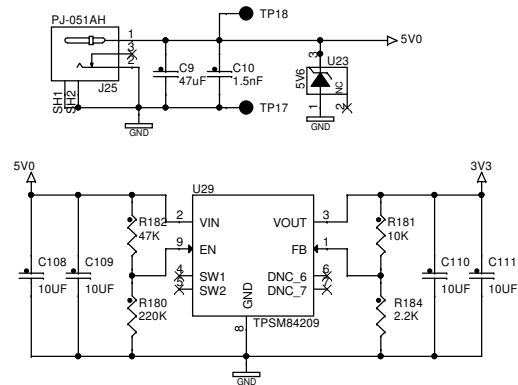
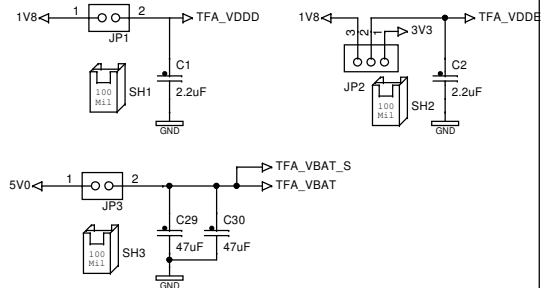


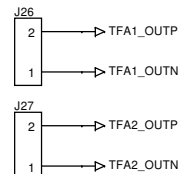
## System Voltage Sources



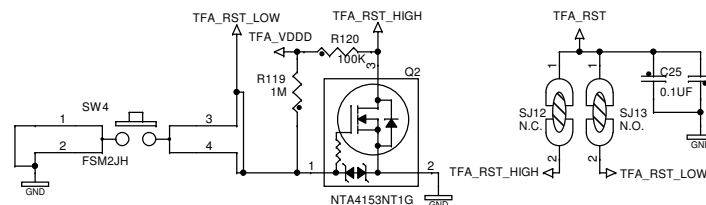
## TFA Power Input



## TFA Load Connectors

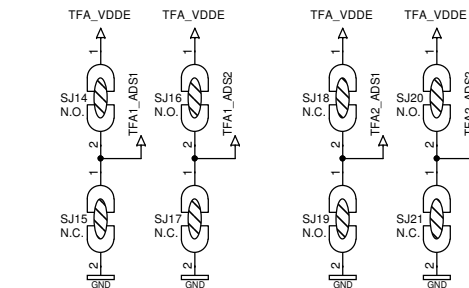


## TFA Reset

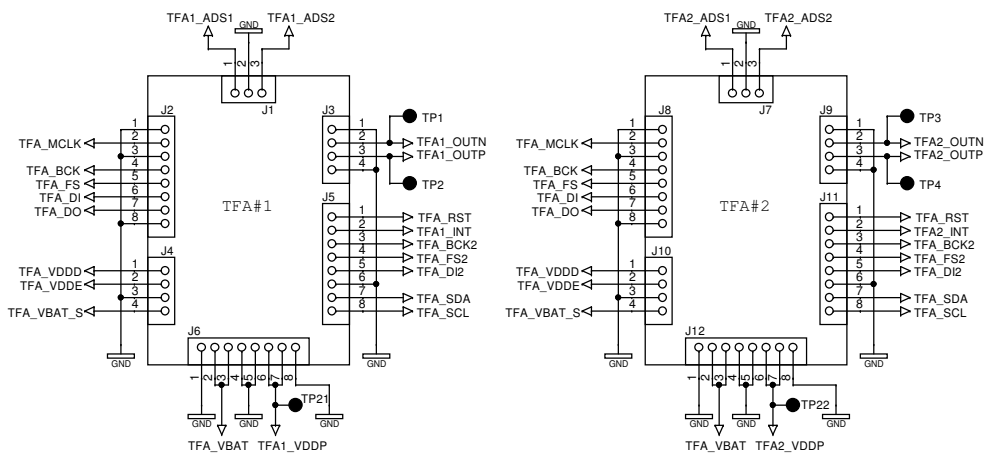



TFA with Reset active High -> SJ12 closed, SJ13 open  
TFA with Reset active Low -> SJ13 closed, SJ12 open

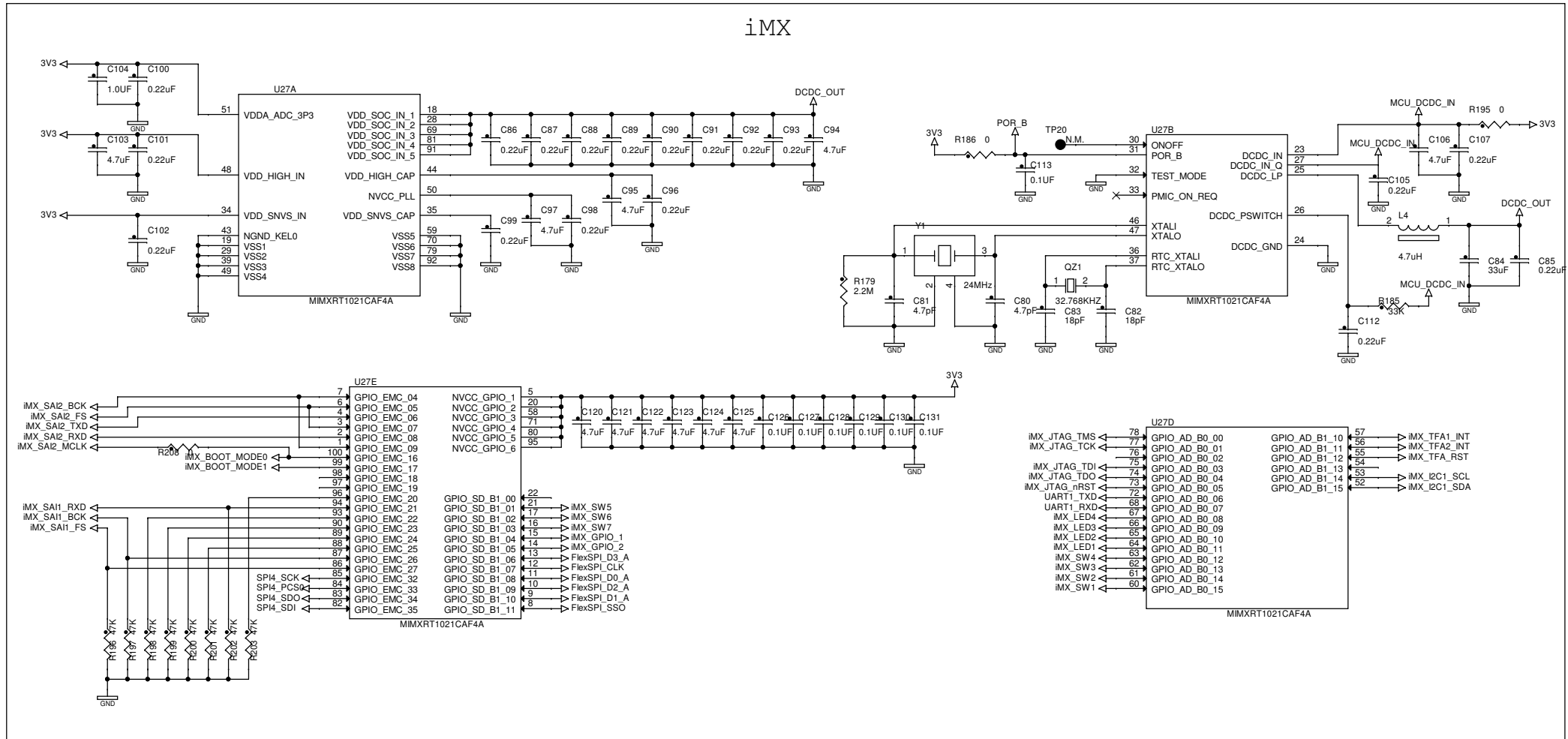
## TFA Translation Board Sockets



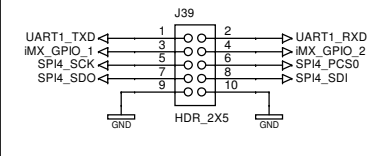
| I2C address select options |      |             |
|----------------------------|------|-------------|
| ADS2                       | ADS1 | Default for |
| LOW                        | LOW  | TFA1        |
| LOW                        | HIGH | TFA2        |
| HIGH                       | LOW  | -           |
| HIGH                       | HIGH | -           |



| PCB Details   |  |  |  |                      |   |                   |                |                  |    |
|---|--|--|--|----------------------|---|-------------------|----------------|------------------|----|
| PCB Description   |  | TFA8200 Demo Board                     |  |                      | PCB Number                                    |                   | 7022-000-00761 |                  |    |
| PCB Manufacturer  |  | See PCB-Info document                  |  |                      | PCB Part Number                               |                   | 7022-000-00771 |                  |    |
| SCHEMATIC PATH /  |  |  |  |                      |   |                   |                |                  |    |
|    |  | IoT Demo Board                         |  |                      | 7022-000-0076                                 |                   |                | REVISION<br>3.00 |    |
|   |  |  |  |                      |   |                   |                |                  |    |
|   |  |  |  |                      | PAGE MODIFY DATE    Thursday, August 15, 2019 |                   |                |                  |    |
| NAME    E.W. van Ingen  |  | DEPARTMENT    Voice & Audio Solutions  |  | SH.TOT.    4         |   | SH.NO.    131 → 1 |                | 10               | A3 |
| DATA FMT    Cadence   |  | PROG    Capture                        |  | PLATF    MS Windows  |   |                   |                |                  |    |
| <small>All rights are reserved. Reproduction in whole or in parts is prohibited without written consent of the copyright owner.</small> |  |  |  |                      |   |                   |                |                  |    |
| DAT.    Monday, July 09, 2018   |  | Property of    ©    NXP SEMICONDUCTORS |  | COMPANY CONFIDENTIAL |   |                   |                |                  |    |

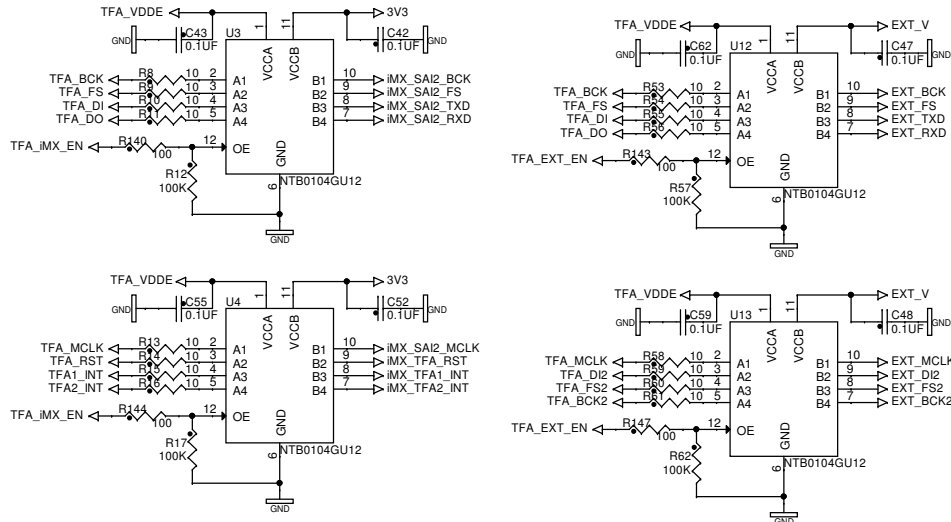


### SPI / GPIO / UART

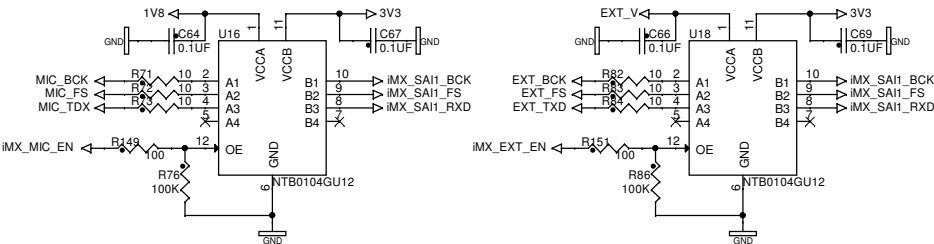


|   |  |  |  |                                       |  |  |  |                     |  |   |  |  |  |                                     |  |                      |  |    |  |                  |  |
|---|--|--|--|---------------------------------------|--|--|--|---------------------|--|---|--|--|--|-------------------------------------|--|----------------------|--|----|--|------------------|--|
| SCHEMATIC PATH /  |  |  |  |                                       |  |  |  |                     |  |   |  |  |  |                                     |  |                      |  |    |  |                  |  |
| <div>NXP</div> <div>IoT Demo Board</div>  |  |  |  |                                       |  |  |  |                     |  | 7022-000-0076                                 |  |  |  |                                     |  |                      |  |    |  | REVISION<br>3.00 |  |
|   |  |  |  |                                       |  |  |  |                     |  | PAGE MODIFY DATE    Thursday, August 15, 2019 |  |  |  |                                     |  |                      |  |    |  |                  |  |
|   |  |  |  |                                       |  |  |  |                     |  | SH.NO. 131 → 1                                |  |  |  | 10                                  |  |                      |  | A3 |  |                  |  |
| NAME    E.W. van Ingen  |  |  |  | DEPARTMENT    Voice & Audio Solutions |  |  |  | SH.TOT.    4        |  |   |  |  |  |                                     |  |                      |  |    |  |                  |  |
| DATA FMT    Cadence   |  |  |  | PROG    Capture                       |  |  |  | PLATF    MS Windows |  |   |  |  |  |                                     |  |                      |  |    |  |                  |  |
| <small>All rights are reserved. Reproduction in whole or in parts is prohibited without written consent of the copyright owner.</small> |  |  |  |                                       |  |  |  |                     |  | DAT.    Monday, July 09, 2018                 |  |  |  | Property of    © NXP SEMICONDUCTORS |  | COMPANY CONFIDENTIAL |  |    |  |                  |  |

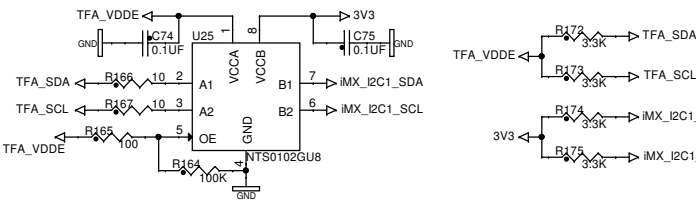
## TFA input/output level shifters



## iMX level shifters



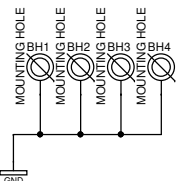
## I2C level shifters



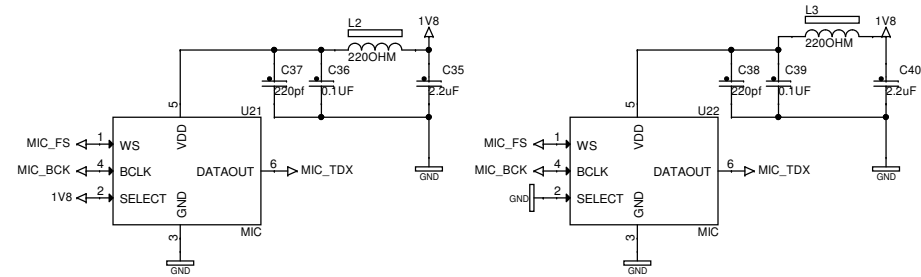
## Fiducials



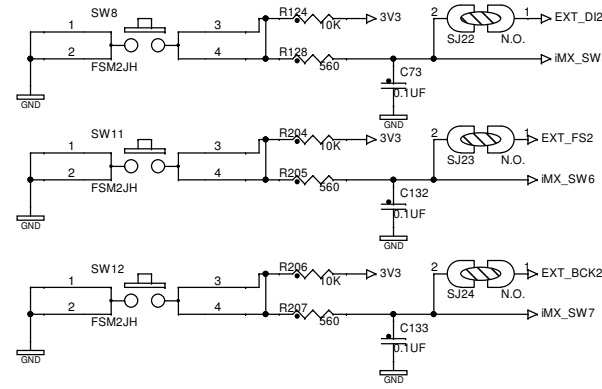
## Mounting Holes



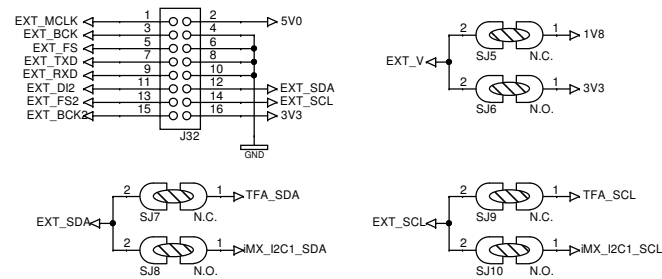
## Digital Microphones



## iMX Push Buttons



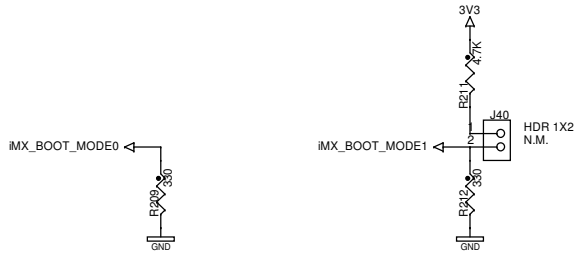
## EXTERNAL I/O connector



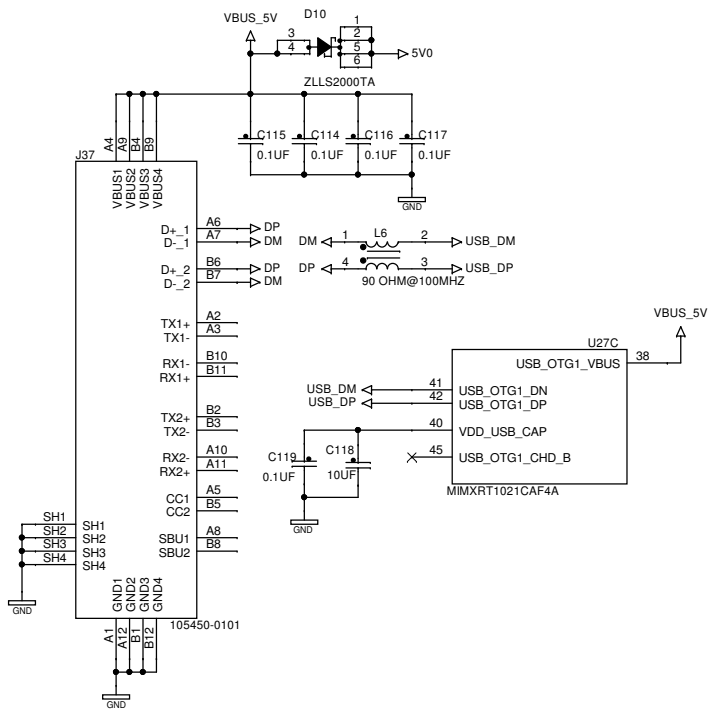
1V8 Signals -> SJ5/SJ7/SJ9 closed, SJ6/SJ8/SH10 open  
3V3 Signals -> SJ6/SJ8/SH10 closed, SJ5/SJ7/SJ9 open

|  |  |                                    |  |                                  |  |
|--|--|------------------------------------|--|----------------------------------|--|
| SCHEMATIC PATH /   |  | 7022-000-0076                      |  | REVISION 3.00                    |  |
| NAME E.W. van Ingen  |  | DEPARTMENT Voice & Audio Solutions |  | SH.TOT. 4                        |  |
| DATA FMT Cadence   |  | PROG Capture                       |  | PLATF MS Windows                 |  |
| All rights are reserved. Reproduction in whole or in parts is prohibited without written consent of the copyright owner. |  | DAT. Monday, July 09, 2018         |  | Property of © NXP SEMICONDUCTORS |  |
|  |  |                                    |  | COMPANY CONFIDENTIAL             |  |

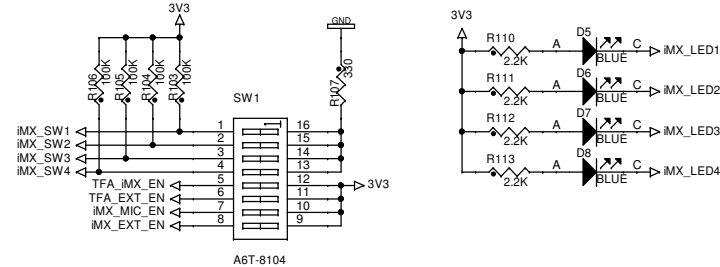
## iMX BOOTMODE



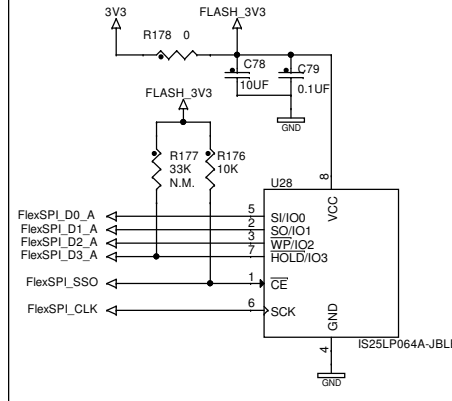
## iMX USB



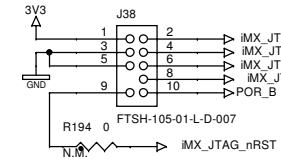
## iMX LEDS, SWITCHES AND INPUT SELECTOR




## iMX FLASH



## iMX JTAG



|   |  |                                       |  |  |                     |   |                   |  |    |                  |    |                               |  |                                     |  |                      |  |
|---|--|---------------------------------------|--|--|---------------------|---|-------------------|--|----|------------------|----|-------------------------------|--|-------------------------------------|--|----------------------|--|
| SCHEMATIC PATH /  |  |                                       |  |  |                     |   |                   |  |    |                  |    |                               |  |                                     |  |                      |  |
|    |  | IoT Demo Board                        |  |  |                     | 7022-000-0076                                   |                   |  |    | REVISION<br>3.00 |    |                               |  |                                     |  |                      |  |
|   |  |                                       |  |  |                     | PAGE MODIFY DATE      Thursday, August 15, 2019 |                   |  |    |                  |    |                               |  |                                     |  |                      |  |
|   |  |                                       |  |  |                     |   |                   |  |    |                  |    |                               |  |                                     |  |                      |  |
| NAME      E.W. van Ingen  |  | DEPARTMENT    Voice & Audio Solutions |  |  | SH.TOT.    4        |   | SH.NO.    131 → 4 |  | 10 |                  | A3 |                               |  |                                     |  |                      |  |
| DATA FMT    Cadence   |  | PROG    Capture                       |  |  | PLATF    MS Windows |   |                   |  |    |                  |    |                               |  |                                     |  |                      |  |
| <small>All rights are reserved. Reproduction in whole or in parts is prohibited without written consent of the copyright owner.</small> |  |                                       |  |  |                     |   |                   |  |    |                  |    | DAT.    Monday, July 09, 2018 |  | Property of    © NXP SEMICONDUCTORS |  | COMPANY CONFIDENTIAL |  |