

6

5

4

3

2

1

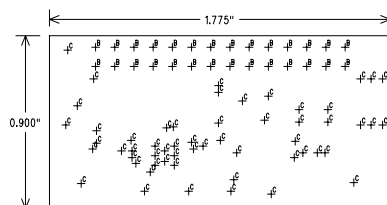
FABRICATION NOTES:

1. ALL BOARD DIMENSIONS IN INCHES. TOLERANCE = ± 0.005 " UNLESS NOTED OTHERWISE.
2. BOARD MATERIAL - FR-4 GRADE GLASS EPOXY, 0.062" \pm .005" THICKNESS MEASURED OVER SOLDERMASK
MINIMUM FLAMMABILITY RATING UL 94V-0
3. OUTER LAYER COPPER THICKNESS 0.0014" (1 OZ).
4. SOLDER MASK OVER BARE COPPER, LPI, CLASS 2 GEN. INDUSTRIAL REGISTRATION ± 0.004 ", GREEN.
NO COVERAGE ON SOLDER PADS PERMITTED.
5. FINISH-TIN/LEAD REFLOWED OR HOT AIR SOLDER LEVELED-0.0002" TO 0.002" PLATING THICKNESS.
NO EXPOSED BARE COPPER PERMITTED
6. WHITE SILKSCREEN LEGEND OVER GREEN SOLDERMASK - BOTH SIDES.
7. HOLE SIZE TOLERANCE = ± 0.002 " UNLESS NOTED OTHERWISE.
HOLE CENTERS AND PAD CENTERS TO BE CONCENTRIC WITHIN 0.004"

REVISION RECORD		
REV.	DESCRIPTION:	DATE:
A	ORIGINAL ISSUE	02-11-04
B	CHANGE PIN NUMBERING J2, LONGER PIN LENGTH .318"	05-14-04

ARTWORK/FABRICATION FILES

LAYER 1 - TOP SIDE ROUTING - COPPER1.PHO
LAYER 2 - BOTTOM SIDE ROUTING - COPPER2.PHO
TOP SIDE SOLDERMASK - TOPMASK.PHO
BOTTOM SIDE SOLDERMASK - BOTTOMMASK.PHO
TOP SIDE SILKSCREEN- TOPSILK.PHO
BOTTOM SIDE SILKSCREEN- BOTSILK.PHO
NC DRILL FILE - NCDRILL.DRL
APERTURE LIST - APERTURES.REP



SIZE	QTY	SYM	PLTD
0.035	28	B	PLTD
0.014	56	C	PLTD



DRAWN BY: MIKE HENNIG	DATE: 02-09-2004	TITLE: FABRICATION DRAWING		
CHECKED BY: MARC DENIS	DATE: 05-18-2004	PROJECT: MOTOROLA ROME02 RF MODULE		
APPROVED BY: BRIAN PETTED	DATE:	SIZE: A	DRAWING NO: MOT02FAB	REV: B
FILENAME:				
MOT02_PCB			SCALE: 1 TO 1	PAGE 1 OF 1

6

5

4

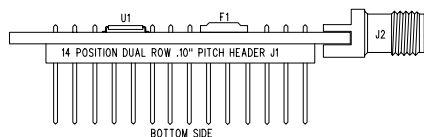
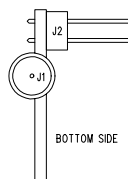
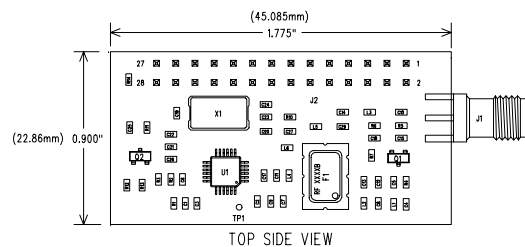
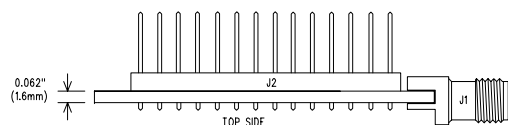
3

2

1

TOP SIDE ASSEMBLY NOTES:

1. THE FOLLOWING COMPONENTS CAN BE POPULATED IN EITHER ORIENTATION:
ALL Rs Ls AND Cs
HEADER J1
CRYSTAL X1
2. WATCH FOR POLARITY OR ORIENTATION MARKINGS ON THE FOLLOWING COMPONENTS:
INTEGRATED CIRCUIT U1.
FILTER F1
3. COMPLETE BOTTOM SIDE SILK SCREEN LEGEND WITH FREQUENCY BAND, EITHER 315 434 868 OR 916.
THREE DIGIT NUMBER GOES IN BOX FOLLOWING MODEL NUMBER MC33591MOD
4. COMPLETE BOTTOM SIDE SILK SCREEN LEGEND WITH BOARD CONFIGURATION, EITHER 1110 OR 1120.
FOUR DIGIT DESIGNATOR GOES IN BOX FOLLOWING ROMEO2 RX.



END LAUNCH SMA CONNECTOR J2
TYPICAL PART JOHNSON COMPONENTS # 142-0711-821

REVISION RECORD		
REV.	DESCRIPTION:	DATE:
A	ORIGINAL ISSUE	02-11-04
B	CHANGE PIN NUMBERING J2, LONGER PIN LENGTH .318"	05-14-04

L.S. RESEARCH, Inc.
WIRELESS PRODUCT DEVELOPMENT
W66 N220 Commerce Court
Cedarburg, WI 53012
PH# (262) 375-4400 FAX# (262) 375-6731

DRAWN BY: MIKE HENNIG	DATE: 02-09-2004	TITLE: TOP SIDE ASSEMBLY DRAWING
CHECKED BY: MARC DENIS	DATE: 05-18-2004	PROJECT: MOTOROLA ROMEO2 RF MODULE
APPROVED BY: BRIAN PETTED	DATE:	SIZE: A
FILENAME:		DRAWING NO: MOT02TAS
MOT02_PCB		REV: B
SCALE: 1 TO 1		PAGE 1 OF 1

6

5

4

3

2

1

D

C

B

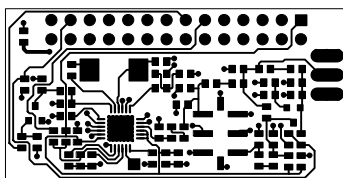
A

D

C

B

A



REVISION RECORD		
REV.	DESCRIPTION:	DATE:
A	ORIGINAL ISSUE	02-11-04
B	CHANGE PIN NUMBERING J2, LONGER PIN LENGTH .318"	05-14-04

**L.S. RESEARCH, Inc.**
WIRELESS PRODUCT DEVELOPMENT
W66 N220 Commerce Court
Cedarburg, WI 53012
PH# (262) 375-4400 FAX# (262) 375-6731

DRAWN BY: MIKE HENNIG	DATE: 02-09-2004	TITLE: TOP SIDE COPPER PATTERN		
CHECKED BY: MARC DENIS	DATE: 05-18-2004	PROJECT: MOTOROLA ROMEO2 RF MODULE		
APPROVED BY: BRIAN PETTED	DATE:	SIZE: A	DRAWING NO: MOT02LR1	REV: B
FILENAME:				
MOT02_PCB			SCALE: 1 TO 1	PAGE 1 OF 1

6

5

4

3

2

1

D

C

B

A

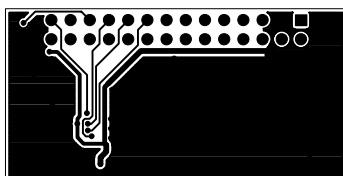
D

C

B

A

REVISION RECORD		
REV.	DESCRIPTION:	DATE:
A	ORIGINAL ISSUE	02-11-04
B	CHANGE PIN NUMBERING J2, LONGER PIN LENGTH .318"	05-14-04



**L.S. RESEARCH, Inc.**
WIRELESS PRODUCT DEVELOPMENT
W66 N220 Commerce Court
Cedarburg, WI 53012
PH# (262) 375-4400 FAX# (262) 375-6731

DRAWN BY: MIKE HENNIG	DATE: 02-09-2004	TITLE: BOTTOM SIDE COPPER PATTERN		
CHECKED BY: MARC DENIS	DATE: 05-18-2004	PROJECT: MOTOROLA ROMEO2 RF MODULE		
APPROVED BY: BRIAN PETTED	DATE:	SIZE: A	DRAWING NO: MOT02LR2	REV: B
FILENAME:				
MOT02_PCB			SCALE: 1 TO 1	PAGE 1 OF 1

6

5

4

3

2

1

D

C

B

A

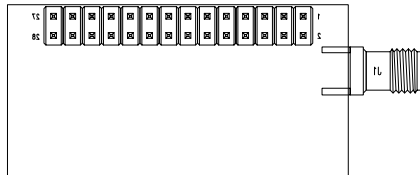
D

C

B

A

REVISION RECORD		
REV.	DESCRIPTION:	DATE:
A	ORIGINAL ISSUE	02-11-04
B	CHANGE PIN NUMBERING J2, LONGER PIN LENGTH .318"	05-14-04



**L.S. RESEARCH, Inc.**
WIRELESS PRODUCT DEVELOPMENT
W66 N220 Commerce Court
Cedarburg, WI 53012
PH# (262) 375-4400 FAX# (262) 375-6731

DRAWN BY: MIKE HENNIG	DATE: 02-09-2004	TITLE: BOTTOM SIDE ASSEMBLY DRAWING		
CHECKED BY: MARC DENIS	DATE: 05-18-2004	PROJECT: MOTOROLA ROMEO2 RF MODULE		
APPROVED BY: BRIAN PETTED	DATE:	SIZE: A	DRAWING NO: MOT02BAS	REV: B
FILENAME:				
MOT02_PCB			SCALE: 1 TO 1	PAGE 1 OF 1

6

5

4

3

2

1

D

D

C

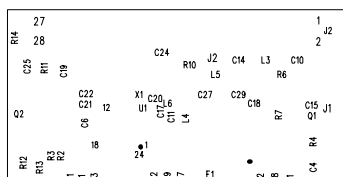
C

B

B

A

A

[illegible]

L.S. RESEARCH, Inc.
WIRELESS PRODUCT DEVELOPMENT
W66 N220 Commerce Court
Cedarburg, WI 53012
PH# (262) 375-4400 FAX# (262) 375-6731

DRAWN BY: MIKE HENNIG		DATE: 02-09-2004		TITLE: TOP SIDE SILK SCREEN PARTS LEGEND	
CHECKED BY: MARC DENIS		DATE: 05-18-2004		PROJECT: MOTOROLA ROMEO2 RF MODULE	
APPROVED BY: BRIAN PETTED		DATE:		SIZE: A	
FILENAME:				DRAWING NO: MOT02TSS	
MOT02_PCB				REV: B	
		SCALE: 1 TO 1		PAGE 1 OF 1	

6

5

4

3

2

1

D

D

C

C

B


B

A

A

[illegible]

11
[REDACTED] ROMEO'S RX
[REDACTED] MC332AIMD

		L.S. RESEARCH, Inc. WIRELESS PRODUCT DEVELOPMENT	
		W66 N220 Commerce Court Cedarburg, WI 53012 PH# (262) 375-4400 FAX# (262) 375-6731	
DRAWN BY: MIKE HENWIG	DATE: 02-09-2004	TITLE: BOTTOM SIDE SILK SCREEN PARTS LEGEND	
CHECKED BY: MARC DENIS	DATE: 05-18-2004	PROJECT: MOTOROLA ROMEO2 RF MODULE	
APPROVED BY: BRIAN PETTED	DATE:	SIZE: A	DRAWING NO: MOT02BSS
FILENAME:			REV: B
MOT02.PCB		SCALE: 1 TO 1	PAGE 1 OF 1