


Table of Contents	
1	TITLE, TOC & REV
2	NOTES
3	FS6500
4	INTERFACE

		Revisions	
Rev	Description	Date	Approved
X1	Original Release	25-MAR-16	Didier Pagnoux
A	Manufacturing Release	06-APR-16	Didier Pagnoux

KITFS6522LAEEVM

		Analog Sensor Product Group 6501 William Cannon Drive West Austin, TX 78735-6598	
<small>This document contains information proprietary to NXP and shall not be used for engineering design, procurement or manufacture in whole or in part without the express written permission of NXP Semiconductors.</small>			
Designer: Didier Pagnoux		Drawing Title: KITFS6522LAEEVM	
Drawn by: Didier Pagnoux		Page Title: TITLE, TOC & REV	
Approved: Didier Pagnoux		Size C	Document Number SCH-29225 PDF: SPF-29225
Date: Wednesday, April 06, 2016		Sheet 1	of 4
		Rev A	

Notes :

This Schematic is intended to support FS45XX and FS65XX family.

All the famillies will be supported on the same PCB.

As a consequence, the variation at schematic level are managed with components maked as "DNP"

Board configured for MC33FS6522LAEEVB

(Vcore DC/DC 2.2A - FS0b (no FS1b) - LDT - CAN & LIN)

Snubber Vpre / Vcore to be redefine



ICAP Classification: CP: IUC: X PUBI:

Drawing Title: **KITFS6522LAEEVM**

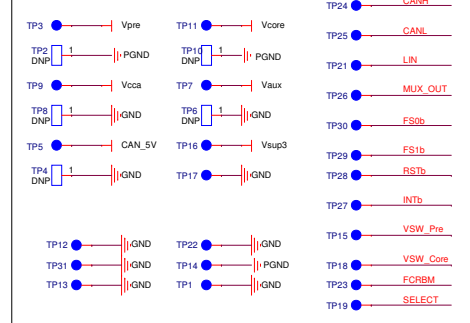
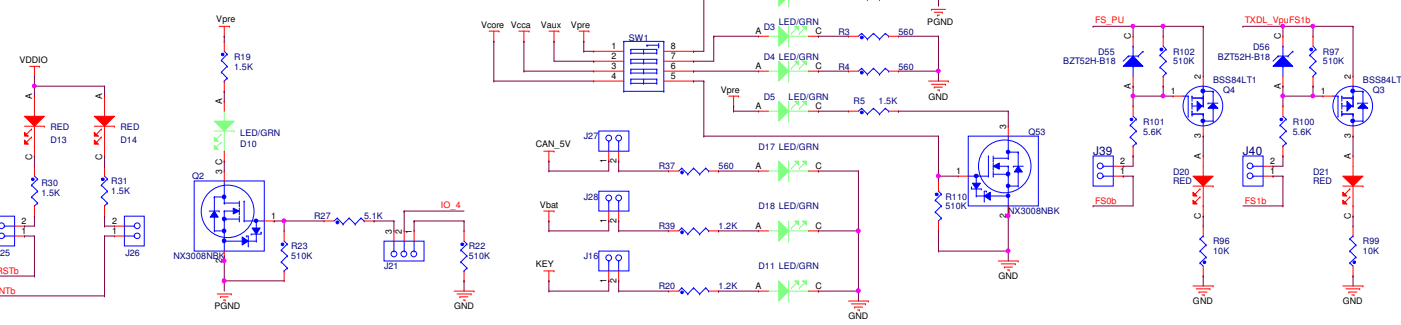
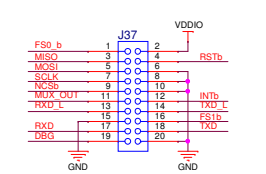
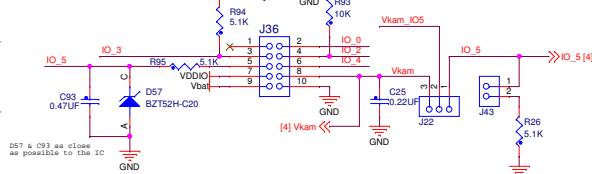
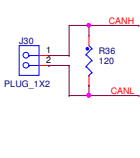
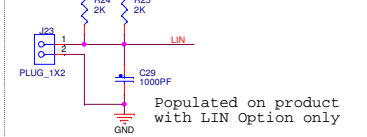
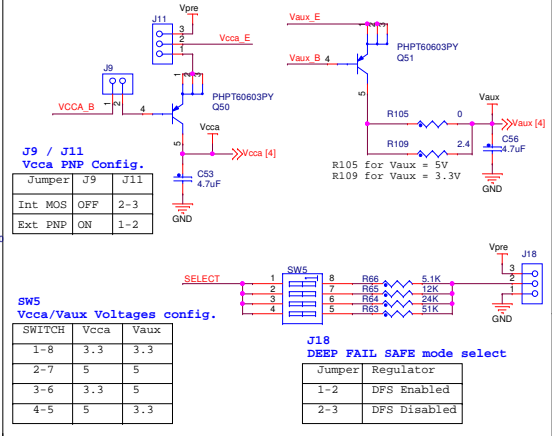
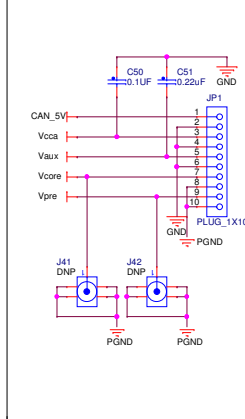
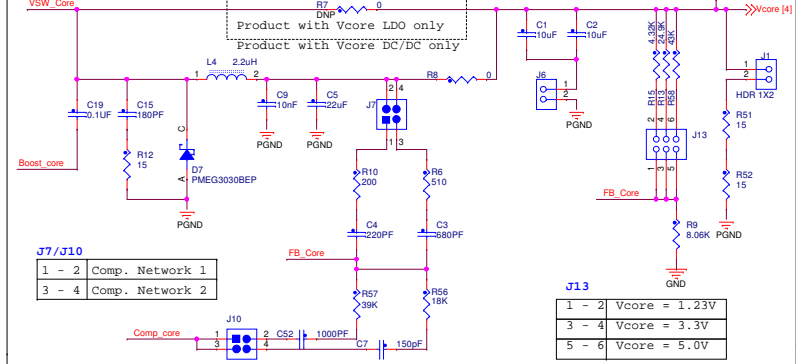
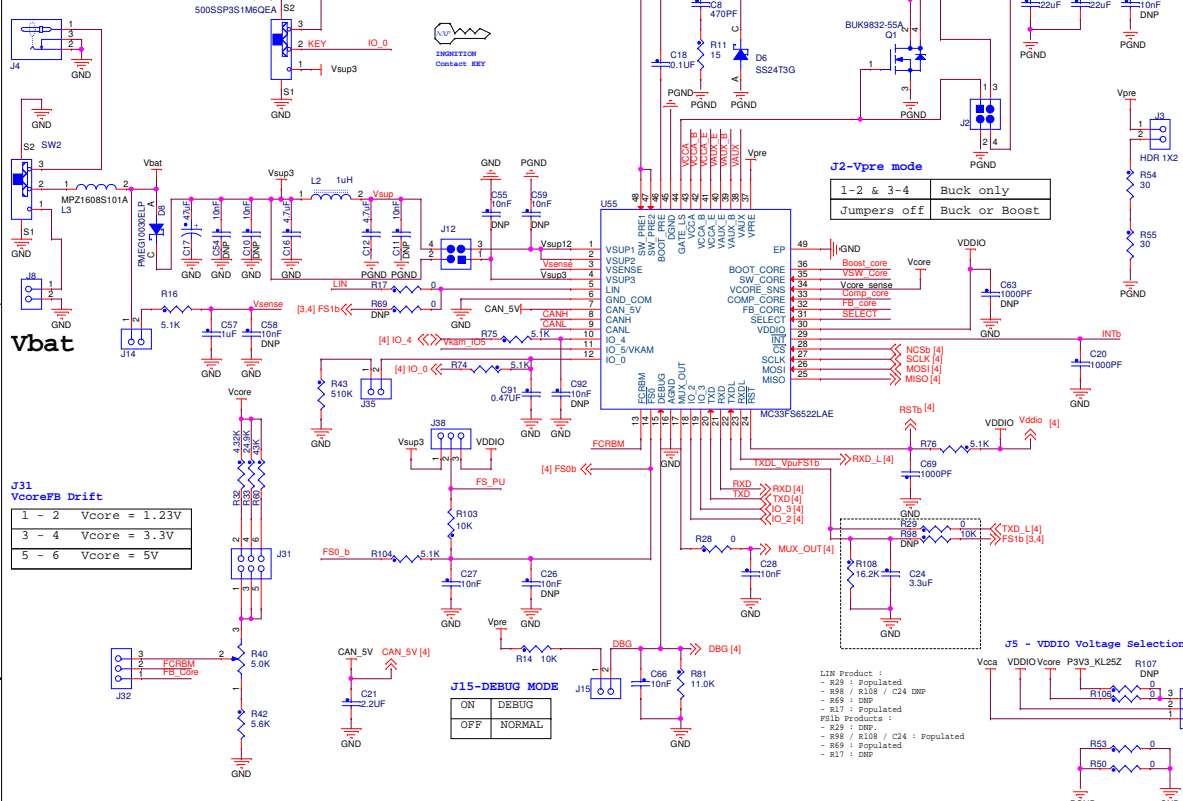
Page Title:

NOTES

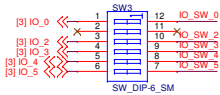
Size C Document Number SCH-29225 PDF: SPF-29225

Rev A

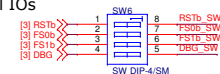
Date: Wednesday, April 06, 2016 Sheet 2 of 4



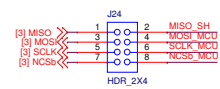
IOs



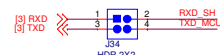
Special IOs



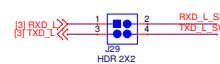
SPI



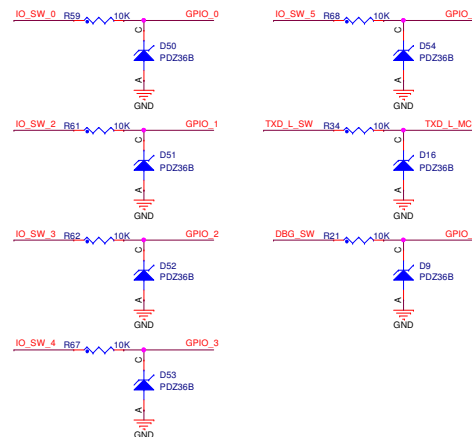
CAN



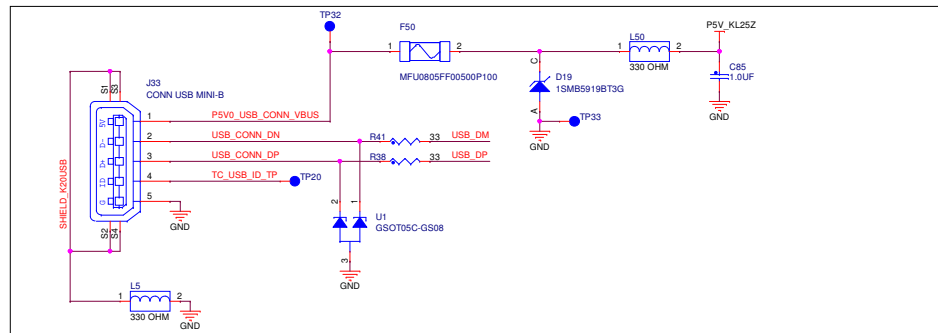
LIN



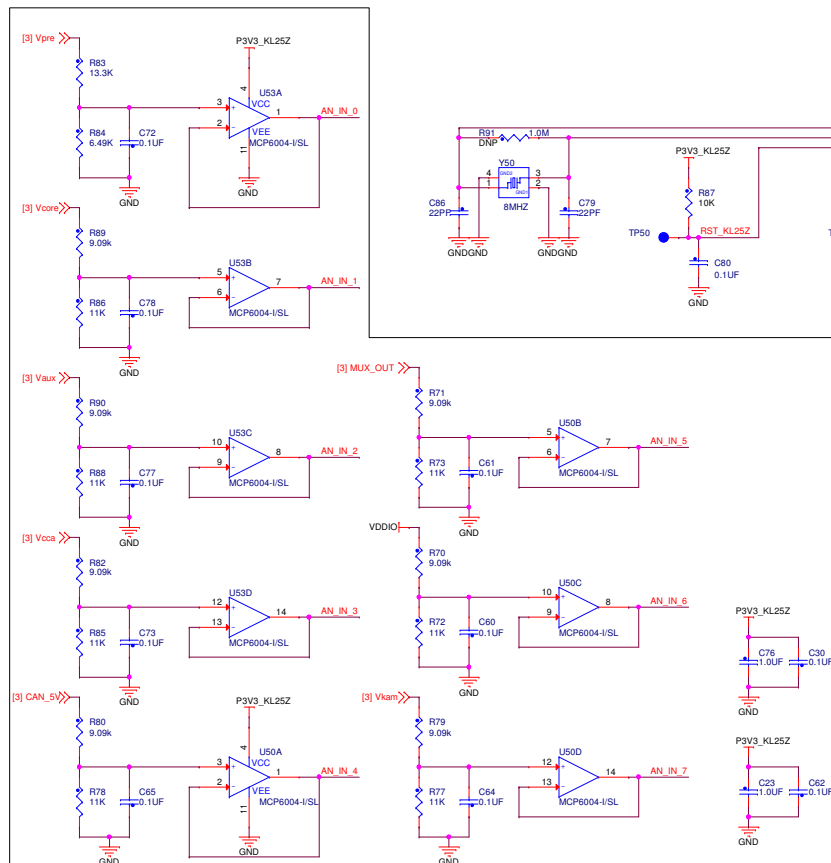
Digital IOs



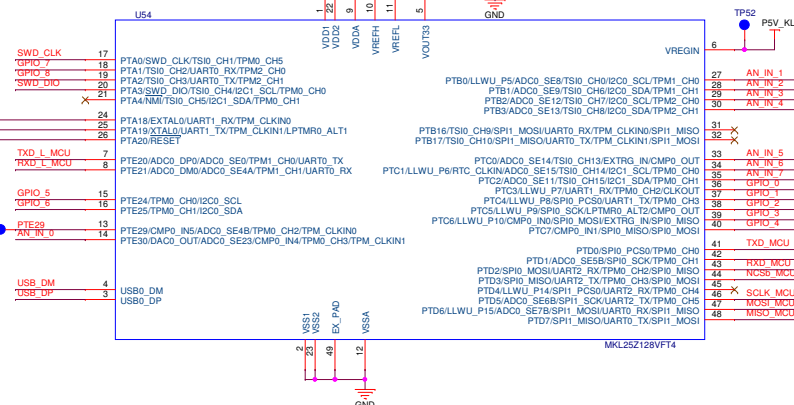
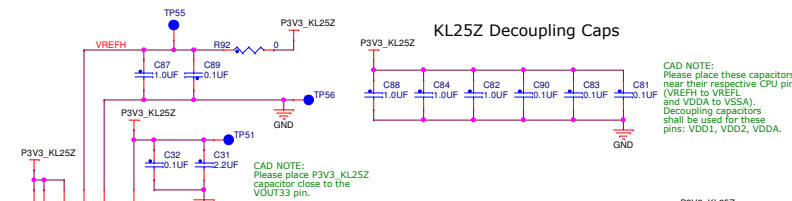
KL25Z USB CONNECTOR



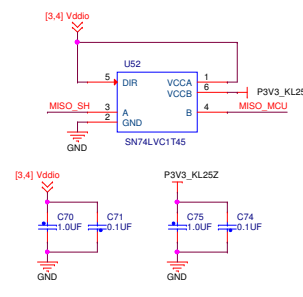
Analog Inputs



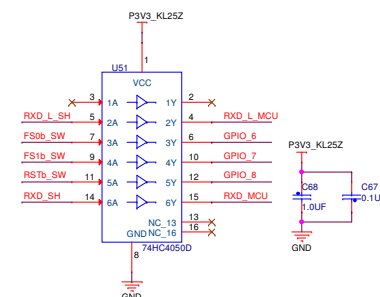
KL25Z Decoupling Caps



FAST HIGH to LOW Level Shifter



HIGH to LOW Level Shifter



SWD CONNECTOR

