

REVISIONS				
ZONE	REV	DESCRIPTION	DATE	APPROVED
	X1	INITIAL RELEASE	21-APR-21	JORGE G

NOTES : TRIANGLE SYMBOLS IDENTIFY NOTES ON THIS DRAWING.

NOTES:

- ALL COMPONENTS MUST BE ABLE TO WITHSTAND THE Pb-FREE ASSEMBLY PROFILES DESCRIBED IN IPC/JEDEC J-STD-020C (LATEST VERSION)
- WORKMANSHIP SHALL CONFORM TO IPC-A-610 (LATEST REVISION) - CLASS 2 STANDARD.
- PART SUBSTITUTION CRITERIA : -  
ALL COMPONENT SUBSTITUTIONS INCLUDING PCB MUST BE APPROVED AND DOCUMENTED BY NXP.
- MAXIMUM LEAD PROTRUSION ON PRIMARY AND SECONDARY SIDE OF PRINTED WIRING BOARD IS .100".
- IN CASES OF CONFLICT, ALL PLACEMENT LOCATIONS ARE TO BE GOVERNED BY THE X-Y CENTROID FILE, UNLESS EXPLICITLY STATED IN THIS ASSEMBLY DRAWING. SILKSCREEN REFERENCE DESIGNATORS ARE INCLUDED FOR CONVENIENCE ONLY.

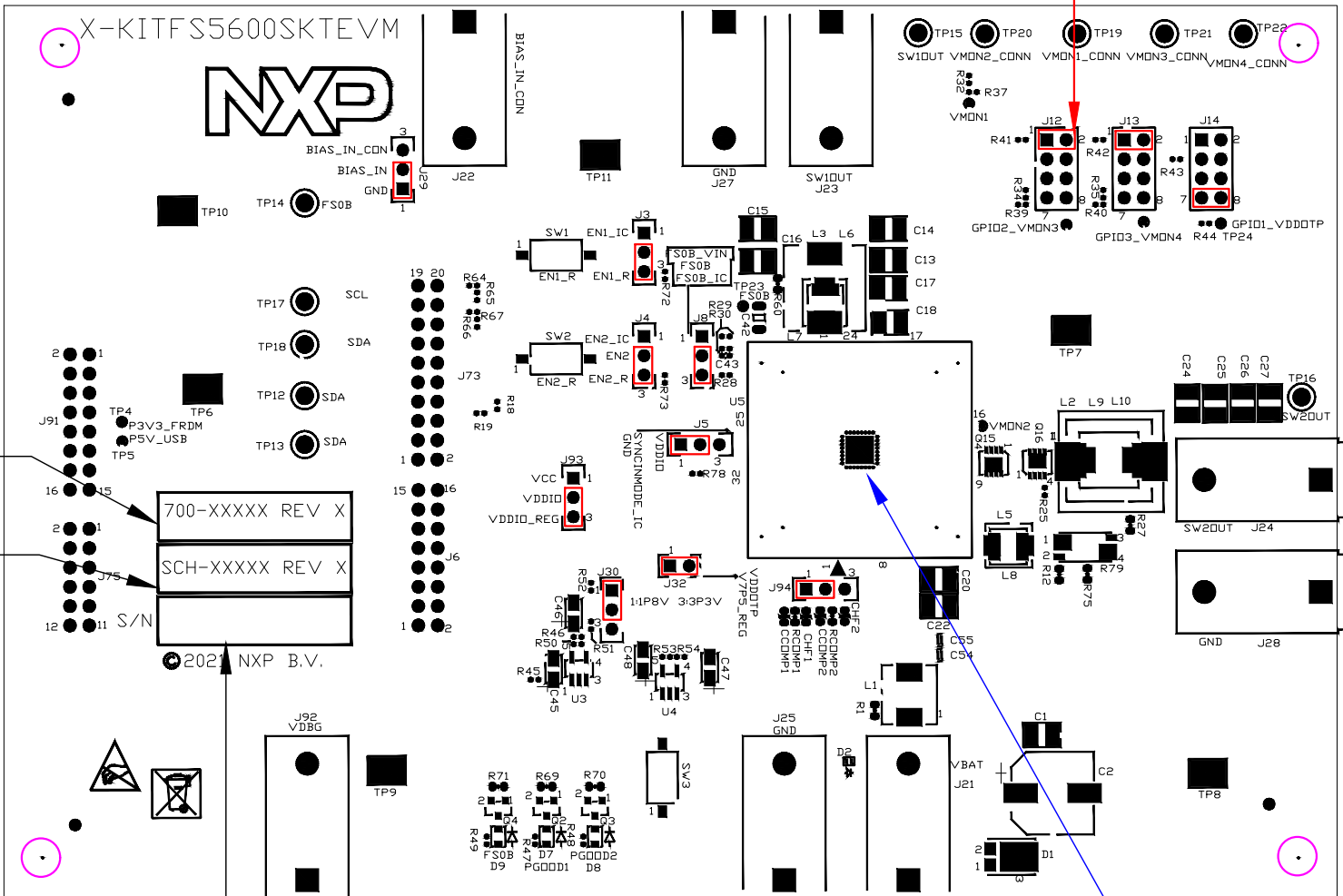
6. PLACE 12 SHUNT PN: (211-79847) AS PER CONFIGURATION.

JUMPER TABLE

REF DES	JUMPER	JUMPER[DEFAULT]	PAGE NAME
J94	DEFAULT(1-2)		3. PMIC Reference
J13,J5,J12		1-2	3. PMIC Reference
J3,J4,J93,J8		2-3	3. PMIC Reference
J14		7-8	3. PMIC Reference
J30,J29		1-2	4. K82F Interface
J32		CLOSED	4. K82F Interface

- PLACE PRINTED ASSEMBLY/REVISION LABEL (805-75115) WHERE SHOWN. PRINTED ON THIS LABEL MUST BE THE AGILE REVISION OF THE PWA 700-50532, NOT THE REVISION OF THIS DRAWING.
- PLACE PRINTED SCH/REVISION LABEL (805-75918) WHERE SHOWN. PRINTED ON THIS LABEL MUST BE THE AGILE REVISION OF THE SCH-50532, NOT THE REVISION OF THIS DRAWING.
- PLACE PRINTED SERIAL NUMBER LABEL (805-75481) WHERE SHOWN.


10. FIX THE SOLDERLESS SOCKET(211-80779) @U5 LOCATION ON PRIMARY SIDE AS HIGHLIGHTED IN DRAWING & REFER SOCKET DRAWING FOR ASSEMBLY METHOD.



D



## A

		6501 WILLIAM CANNON DRIVE AUSTIN, TEXAS 78735-8598 USA	
TITLE PWB ASSEMBLY KITFS5600SKTEVM			
SIZE	FILE NAME	DWG. NO.	REV
B	ASY-50532.DXF	ASY-50532	X1
SCALE	1:1	DO NOT SCALE DRAWING	SHEET 1 OF 2

**REACH** : ALL PARTS, MATERIALS AND FINISHED ASSEMBLY SHALL NOT CONTAIN ANY OF THE SUBSTANCES OF VERY HIGH CONCERN (SVHC) ABOVE THE THRESHOLD VALUE PER THE CURRENT ECHA LIST OF SVHC'S, AND WITH THE ANNEX XIV OF REACH DIRECTIVE 76 / 769 / EEC.. A CERTIFICATE OF COMPLIANCE IS REQUIRED UPON REQUEST.