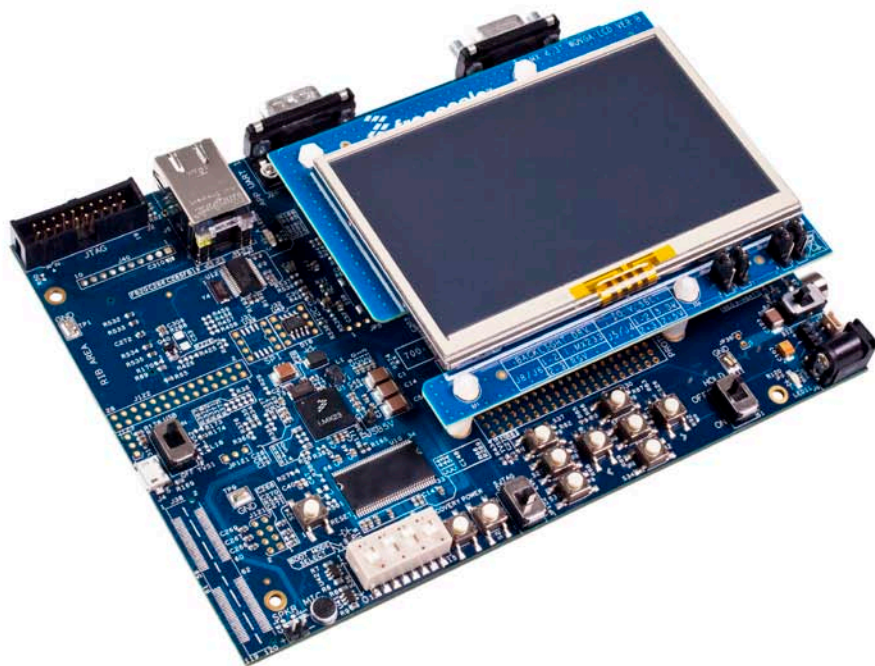


i.MX23 EVK Windows Embedded CE 6.0

Quick Start Guide



Document Number: 926-78439
Rev. 2010.05
6/2010



How to Reach Us:

Home Page:

www.freescale.com

Web Support:

<http://www.freescale.com/support>

USA/Europe or Locations Not Listed:

Freescale Semiconductor
Technical Information Center, EL516
2100 East Elliot Road
Tempe, Arizona 85284
+1-800-521-6274 or +1-480-768-2130
www.freescale.com/support

Europe, Middle East, and Africa:

Freescale Halbleiter Deutschland GmbH
Technical Information Center
Schatzbogen 7
81829 Muenchen, Germany
+44 1296 380 456 (English)
+46 8 52200080 (English)
+49 89 92103 559 (German)
+33 1 69 35 48 48 (French)
www.freescale.com/support

Japan:

Freescale Semiconductor Japan Ltd.
Headquarters
ARCO Tower 15F
1-8-1, Shimo-Meguro, Meguro-ku,
Tokyo 153-0064, Japan
0120 191014 or +81 3 5437 9125
support.japan@freescale.com

Asia/Pacific:

Freescale Semiconductor China Ltd.
Exchange Building 23F
No. 118 Jianguo Road
Chaoyang District
Beijing 100022
China
+86 010 5879 8000
support.asia@freescale.com

For Literature Requests Only:

Freescale Semiconductor Literature Distribution Center
P.O. Box 5405
Denver, Colorado 80217
1-800-441-2447 or 303-675-2140
Fax: 303-675-2150
LDCForFreescaleSemiconductor@hibbertgroup.com

Information in this document is provided solely to enable system and software implementers to use Freescale Semiconductor products. There are no express or implied copyright licenses granted hereunder to design or fabricate any integrated circuits or integrated circuits based on the information in this document.

Freescale Semiconductor reserves the right to make changes without further notice to any products herein. Freescale Semiconductor makes no warranty, representation or guarantee regarding the suitability of its products for any particular purpose, nor does Freescale Semiconductor assume any liability arising out of the application or use of any product or circuit, and specifically disclaims any and all liability, including without limitation consequential or incidental damages. "Typical" parameters that may be provided in Freescale Semiconductor data sheets and/or specifications can and do vary in different applications and actual performance may vary over time. All operating parameters, including "Typicals", must be validated for each customer application by customer's technical experts. Freescale Semiconductor does not convey any license under its patent rights nor the rights of others. Freescale Semiconductor products are not designed, intended, or authorized for use as components in systems intended for surgical implant into the body, or other applications intended to support or sustain life, or for any other application in which the failure of the Freescale Semiconductor product could create a situation where personal injury or death may occur. Should Buyer purchase or use Freescale Semiconductor products for any such unintended or unauthorized application, Buyer shall indemnify and hold Freescale Semiconductor and its officers, employees, subsidiaries, affiliates, and distributors harmless against all claims, costs, damages, and expenses, and reasonable attorney fees arising out of, directly or indirectly, any claim of personal injury or death associated with such unintended or unauthorized use, even if such claim alleges that Freescale Semiconductor was negligent regarding the design or manufacture of the part.

Freescale™ and the Freescale logo are trademarks of Freescale Semiconductor, Inc. All other product or service names are the property of their respective owners. Microsoft, Windows, and ActiveSync are trademarks or registered trademarks of Microsoft Corporation. ARM, ARM9, and the ARM logo are registered trademarks of ARM Limited.

© Freescale Semiconductor, Inc. 2010. All rights reserved.

Contents

Contents.....	iii
Chapter 1 About the Board	1-1
1.1 Block Diagram	1-2
1.2 i.MX23 EVK Board	1-3
Chapter 2 Getting Started	2-1
2.1 Unpack the Kit	2-1
2.2 Web Based Contents	2-3
2.3 Development PC Requirements	2-3
Chapter 3 LCD Board Assembly	3-1
Chapter 4 Using the Demo Image	4-1
4.1 Boot from NAND	4-1
4.2 Multimedia Codecs Content	4-2
4.3 Downloading Multimedia Content to the i.MX23 EVK Board.....	4-2
4.3.1 Using ActiveSync	4-2
4.3.2 Using an SD Card	4-6
4.4 Running the Demo Applications.....	4-8
Chapter 5 Documentation	5-1

Chapter 1

About the Board

This chapter provides detailed information about the i.MX23 EVK and the locations of the connectors and switches.

The i.MX23 Windows® Embedded CE 6.0 EVK that is designed for multimedia and connectivity applications uses the i.MX23 series ARM9® Applications Processor. The i.MX23 EVK that can be used as a hardware and software development platform decreases the time to market the products providing a near-to-final product design. The board support packages (BSP) for the i.MX23 EVK, contain drivers optimized for multimedia operations using the i.MX23.

The following are included in the i.MX23 EVK:

- CPU board that contains the i.MX23 CPU, DDR1, and NAND Flash
- USB Connection
- Ethernet Connection
- SD/MMC Connection
- Two UARTs
- Audio I/O Jack
- Speaker Out
- Microphone
- JTAG
- TV Out Jack

1.1 Block Diagram

Figure 1-1 shows the block diagram of i.MX23 EVK.

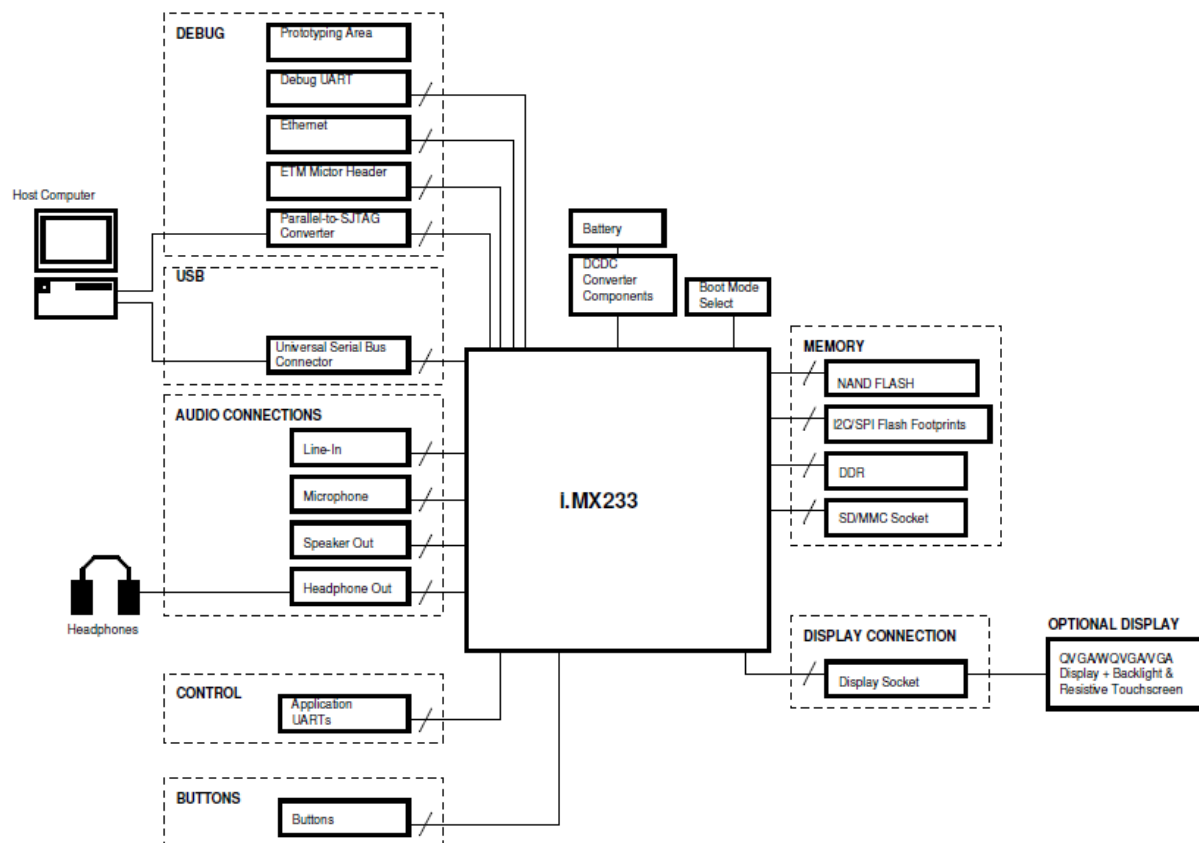


Figure 1-1 i.MX23 EVK Block Diagram

Figure 1-2 shows the top view of the i.MX23 EVK board without the LCD module.

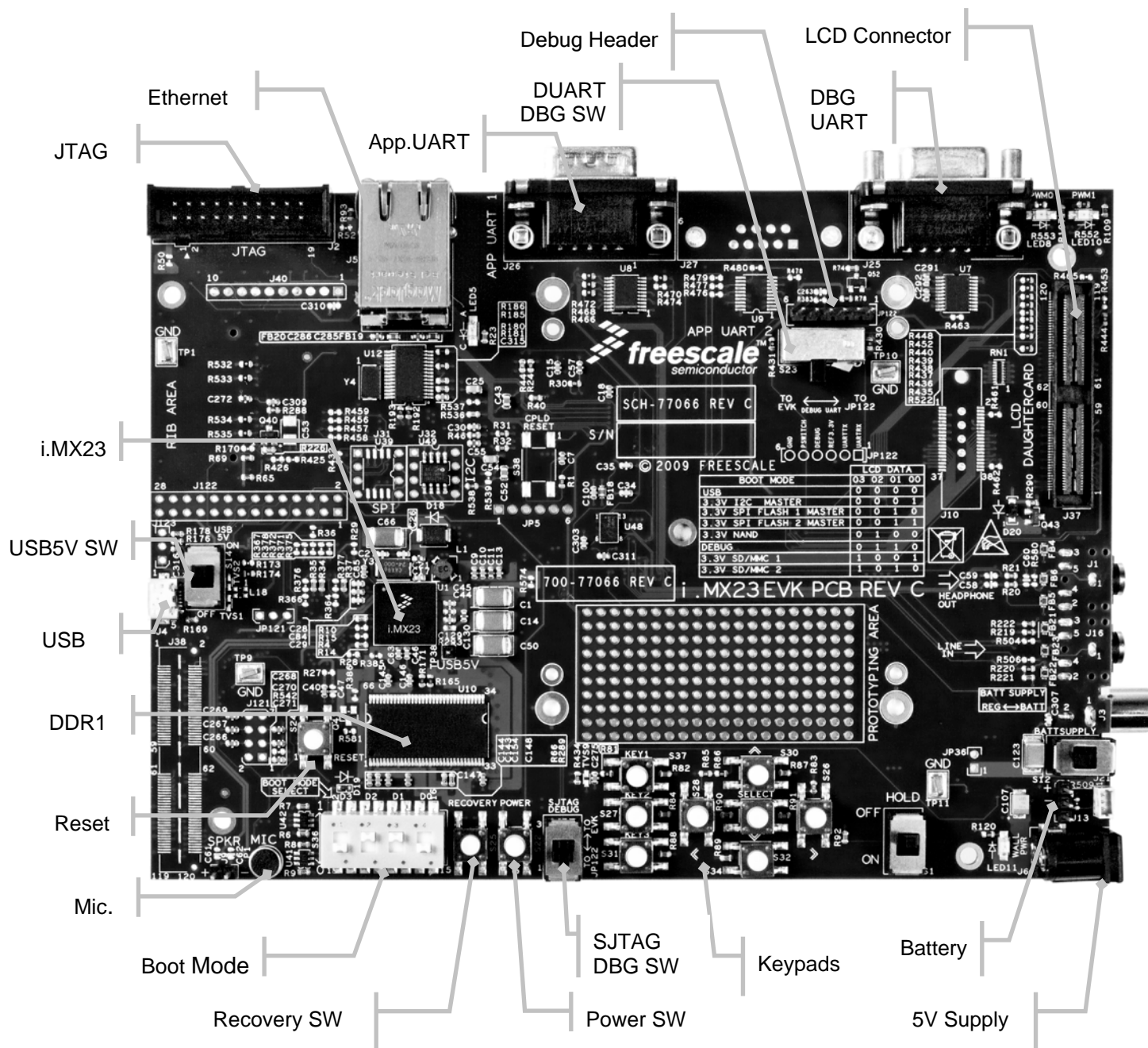


Figure 1-2 i.MX23 EVK Top View (Without LCD)

Figure 1-3 shows the bottom view of the i.MX23 EVK board.

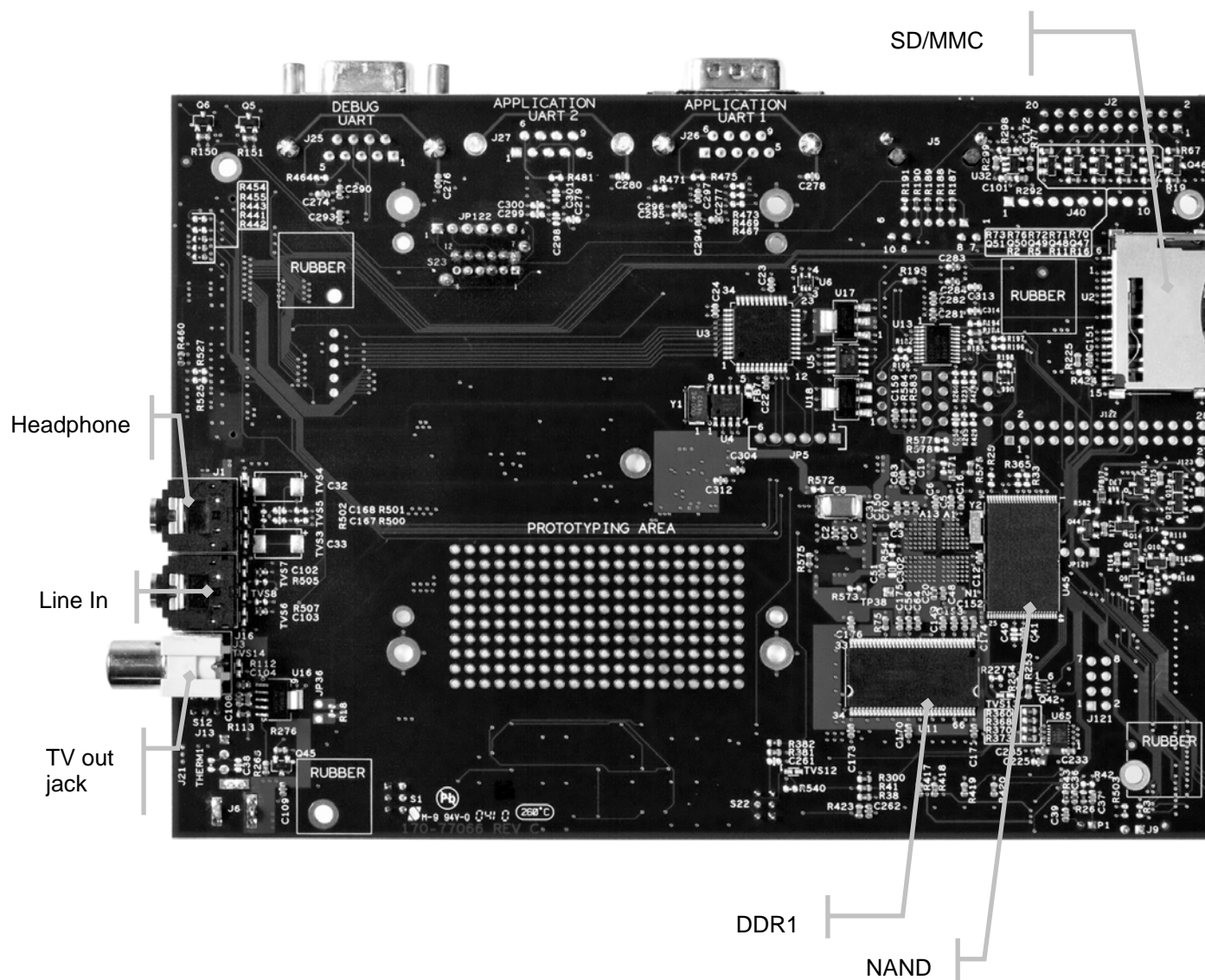


Figure 1-3 i.MX23 EVK Bottom View

Chapter 2

Getting Started

This chapter describes how to start using the i.MX23 EVK, what is included in the kit and the development PC requirements.

2.1 Unpack the Kit

The i.MX23 EVK is shipped with the items listed in Table 2-1.

Table 2-1 i.MX23 EVK Development Kit Contents

Item	Description
Board	i.MX23 EVK Board LCD Module (order separately, MCIMX23LCD)
Cables	Ethernet Straight Cable USB to Micro USB Cable
Power Supply	5.0 V/5.0 A Universal Power Supply
Documentation	Software and Documentation Web Content End-User License Agreement Quick Start Guide (this document) Warranty Card Freescale Support Card

Verify whether all of the items are within the package, as shown in Figure 2-1. Remove all the boards from the anti-static bags and check the boards for any visible damage.

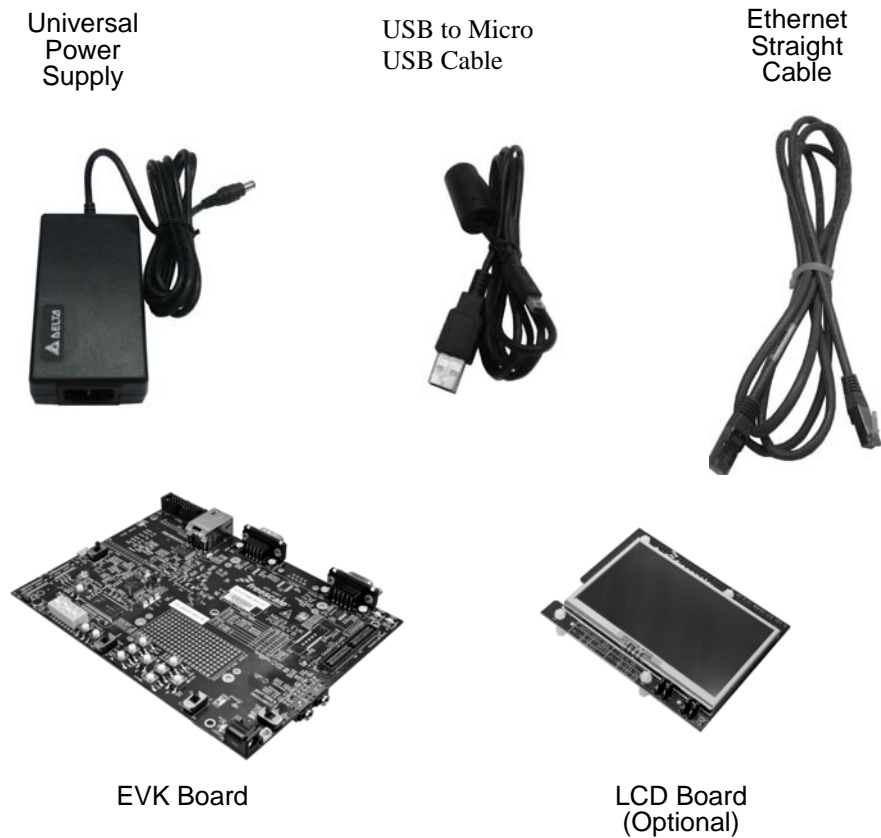


Figure 2-1 i.MX23 EVK Kit Contents

2.2 Web Based Contents

All the i.MX23 EVK latest documentation and software are posted in the product's website: www.freescale.com/imx23evk . Table 2-2 lists all the documents that are posted in this site.

Table 2-2 Web-site Contents

Type	Description
Product Documentation	Schematics, and Gerber files for CPU, Personality, and Debug Boards i.MX23 Hardware User's Guide i.MX23 Windows CE Demo Image Readme i.MX23 Windows CE Quick Start Guide (this document) i.MX23 Windows CE Release Notes i.MX23 Windows CE User's Guide i.MX23 Windows CE Reference Manual i.MX23 Windows CE Hello World Application Note
Software Development Tools	Windows CE EVK Installation File
i.MX23 EVK Windows Demo Image	Demo Image File. Demo Image is also Flashed on the board.

2.3 Development PC Requirements

To develop applications using the i.MX23 EVK, a PC is required with the requirements shown in the Table 2-3.

Table 2-3 Development PC Requirements

Type	Requirement
Operating System	Windows XP Professional with Service Pack 1 or Windows 2000 Professional with Service Pack 4
Network	Internet access
Software Tools	<ul style="list-style-type: none">• Microsoft ® .NET Framework, version 1.1
PC HW	<ul style="list-style-type: none">• 933 MHz Pentium II or later processor;• 2 GHz processor recommended• 512 MByte of RAM; 1 GByte recommended• 1 GByte of available space required on system drive• 18 GByte of available hard-disk space• DVD ROM drive• 1024x768 or higher resolution display with 256 colors

Chapter 3

LCD Board Assembly

This section explains how to connect the LCD board on the i.MX23 EVK board.

The i.MX23 EVK board is connected to the LCD board using 120 pin Mictor connectors. The connectors are keyed to avoid misconnection. Hence, there is only one way to connect these boards.

The LCD board is connected to the J37 connector. The J37 connector is located on the top layer of the i.MX23 EVK board. See Figure 3-1 to locate the J37 connector.

NOTE

The 4.3" WQVGA LCD Board is an optional card for the i.MX23 EVK board and it is sold separately from the i.MX23 EVK board.

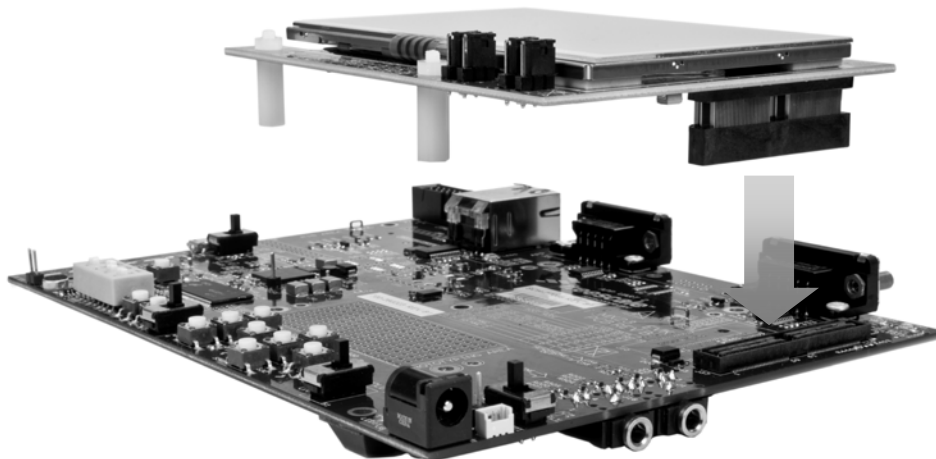


Figure 3-1 LCD Board Assembly

Figure 3-2 shows the i.MX23 EVK board with the LCD attached.

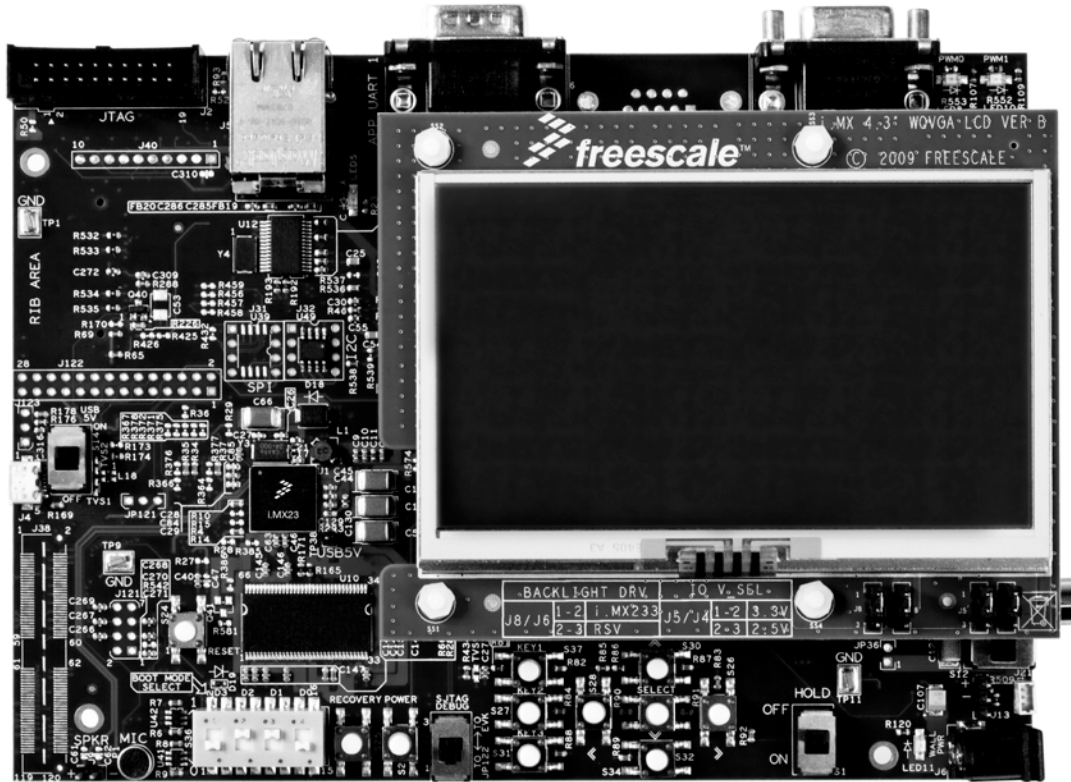


Figure 3-2 i.MX23 EVK with LCD Board

Chapter 4

Using the Demo Image

This chapter shows how to use the Windows Embedded CD 6.0 demo image shipped with your i.MX23 Windows CE EVK system. For details on how to flash the demo image to the EVK NAND flash, see the *i.MX23EVK Windows CE User Guide*.

NOTE

The demo image present in all the Windows CE EVK boards needs the LCD board to work properly. If the EVK board has no LCD board, compile a Windows CE image without the GUI using our BSP, and then download that image to your board. To follow this procedure, see the *i.MX23EVK Windows CE User Guide*.

4.1 Boot from NAND

The section explains how to boot from NAND:

- Set the Boot Mode dip switches on the EVK board to NAND boot as shown in Table 4-1.

Table 4-1 Boot Mode Setting

Boot Mode	D3	D2	D1	D0
NAND boot	0	1	0	0

- Connect the Debug UART (J25) to a serial terminal using the configuration settings shown in Table 4-2.

Table 4-2 Serial Terminal Configuration

Parity	None
Data bits	8
Stop bit	1
Baud Rate	115200

- Connect DC 5V and press POWER button.

4.2 Multimedia Codecs Content

The Windows Embedded CE 6.0 Demo Images contain a set of multimedia codecs that support various use cases. These codecs are optimized to run on the i.MX23 platform.

For a list of the provided codecs, see *i.MX23 EVK Windows Embedded CE 6.0 Demo Image Readme*.

For more information about the multimedia codecs, contact a Freescale sales representative or distributor.

4.3 Downloading Multimedia Content to the i.MX23 EVK Board

There are two ways to load multimedia content to the i.MX23 EVK board using the Windows Embedded CE 6.0 image.

- Using ActiveSync®
- Using an Secure Digital (SD) Card

4.3.1 Using ActiveSync

ActiveSync is a very useful tool to use with a Windows Embedded CE 6.0 device. To obtain the ActiveSync download and the instructions, go to:

<http://www.microsoft.com/windowsmobile/activesync/activesync45.mspx/>

When ActiveSync is installed, communication between the i.MX23 EVK board and host PC is established.

To establish the communication between the host PC and the i.MX23 EVK board, follow these steps:

1. Ensure that the i.MX23 EVK board is ON and the Windows Embedded CE 6.0 is running.
2. Ensure that ActiveSync is running on your host PC (the ActiveSync icon should appear gray on the Windows task bar).
3. Using the microUSB B to type A cable, connect the microUSB B end to the J4 USB OTG connector on the i.MX23 EVK board, and the other end to the any available USB port on your Host PC.
4. Once the communication is established, Windows in host PC recognizes the i.MX23 EVK board as a Windows Embedded CE 6.0 device, and the ActiveSync wizard is displayed on the host PC as shown in Figure 4-1.



Figure 4-1 Set Up a Partnership

5. Select **Yes**, and then click **Next**. The Select Synchronization Settings options are displayed as shown in Figure 4-2

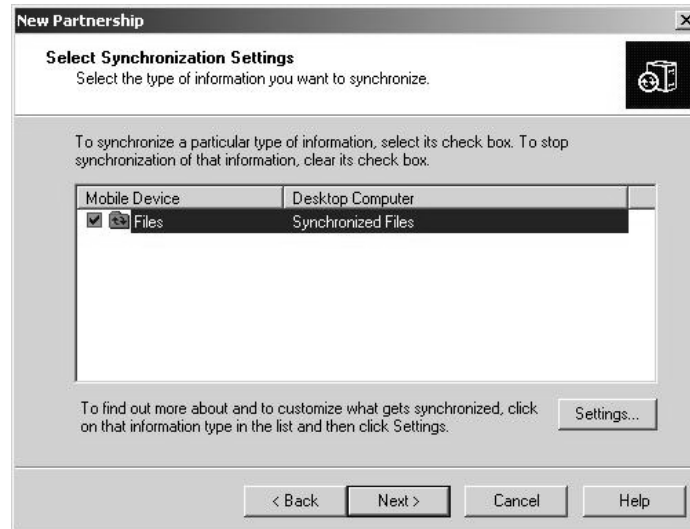


Figure 4-2 Select Synchronization Options

6. Select the **Files** option from the Select Synchronization Settings window, to synchronize the type of information. See Figure 4-2.

The following message is displayed, see Figure 4-3. The message notes that the program will create a folder to transfer files to the Mobile Device (i.MX23 EVK).

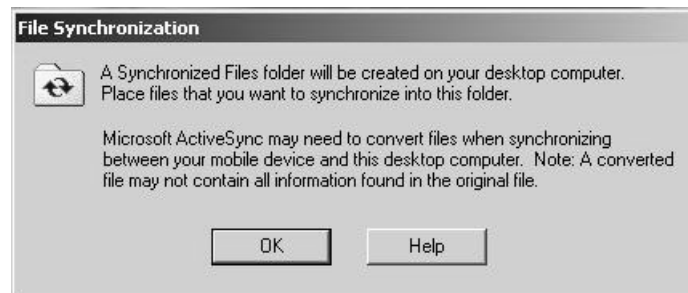


Figure 4-3 Warning from ActiveSync File Synchronization

7. Click **OK**.

8. Continue through the wizard until it is complete.

When ActiveSync establishes communications with the i.MX23 EVK board, the ActiveSync main window is displayed with the status of the connection. See Figure 4-4.



Figure 4-4 Viewing the Connection Status

9. To browse the Mobile Device folders, click the Explore icon in the ActiveSync window.

A new Windows explorer window for the Mobile Device opens on the host PC. See Figure 4-5.

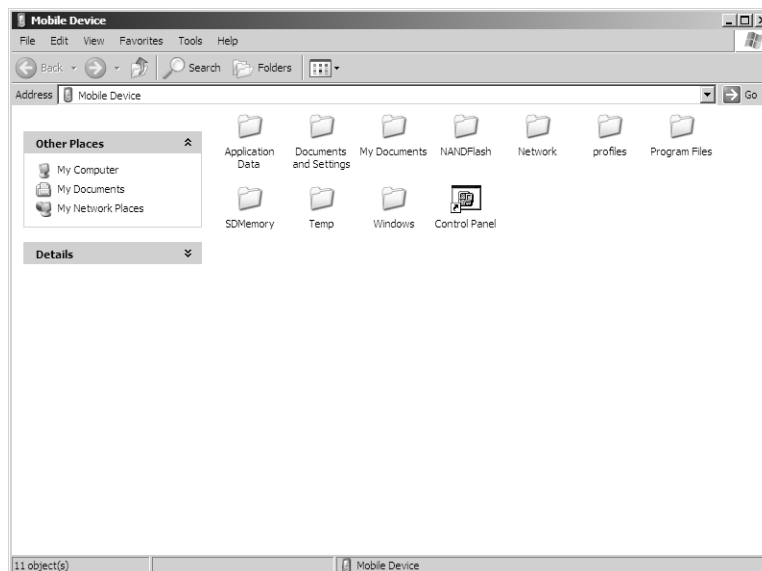


Figure 4-5 Windows Explorer for Mobile Device

10. To download a multimedia file to the EVK board, drag the file to the Mobile Device window.

The ActiveSync program transfers the file to the board and displays a message indicating that the file will be converted.

11. Click **OK**. The download begins.

NOTE

For more information about the multimedia files supported by the Windows Embedded CE 6.0 image pre-loaded in the board, see *i.MX23 EVK Windows Embedded CE 6.0 Demo Image Readme* in the EVK documentation.

12. To access the files, double-click the My Device icon in the Windows Embedded CE 6.0 desktop (on the i.MX23 EVK board).

A Windows Explorer window displays the content you downloaded with ActiveSync. See Figure 4-6.



Figure 4-6 Downloaded Content

13. Plug the headphones into the J1 Audio jack connector.
14. Double-click your multimedia file to play the file.

4.3.2 Using an SD Card

If you have an SD Card with pictures or other multimedia content, you can use the i.MX23 EVK Board to view its content.

To use the SD Card, follow these steps:

15. Ensure that the i.MX23 EVK is powered ON and the Windows Embedded CE 6.0 demo image is running.
16. Insert the SD Card in the MMC/SD Card slot (U2), which is located on the bottom layer of the EVK board.
17. Click the My Device icon located in the Windows Embedded CE 6.0 desktop.

A Windows Explorer window opens, displaying the SD Memory icon. See Figure 4-7.

18. To access the SD Card content, double click the SD Memory icon.



Figure 4-7 Viewing the SD Memory Icon

4.4 Running the Demo Applications

The Windows Embedded CE 6.0 image that is pre-loaded on the i.MX23 EVK board includes the demo applications described in Table 4-3.

Table 4-3 Demo Applications Included in OS Demo Image

Application	Description
Enablespeaker.exe	Route the audio to the speaker connector J9 (Not populated with a speaker)
Etcha.exe	Touch Driver Test Program
Rotate.exe	Application that rotate the orientation of the GUI.
SilverlightClock.exe	Demo application of the use of the Microsoft Silverlight.
USB Set Applications	Multiple applications to set mode of the USB function driver.
PHDC_Peripheral_App.exe	Demo GUI application.

To access the demo applications on the OS image, click the My Device icon on the Windows Embedded CE 6.0 desktop. Open the Windows folder to view the demo applications. See Figure 4-8.

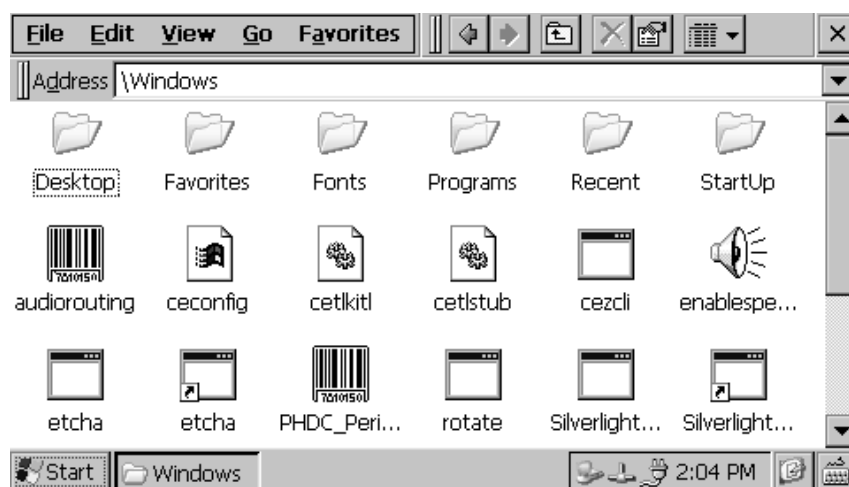


Figure 4-8 Demo Applications in Windows Folder

Chapter 5

Documentation

The following documents contain more information to assist development with the i.MX23 EVK:

- i.MX23 Hardware User Guide provides hardware information for the EVK, including the connectors, switches, options, and pins.
- i.MX23 Windows Embedded CE 6.0 Release Notes provides the tools needed to use the EVK, including the driver availability and known errors.
- i.MX23 Windows Embedded CE 6.0 User Guide explains how to build and modify a Windows image and deploy the image to the EVK.
- i.MX23 Windows Embedded CE 6.0 Reference Manual provides detailed information about the BSP drivers, including functional information, dependencies, and building options for each driver.
- i.MX23 Windows Embedded CE 6.0 Hello World Application Note explains how to create a simple Hello World application.

For additional information, see the support documentation in the i.MX23 EVK package.