



Quick Start Guide

i.MX RT1010 Evaluation Kit



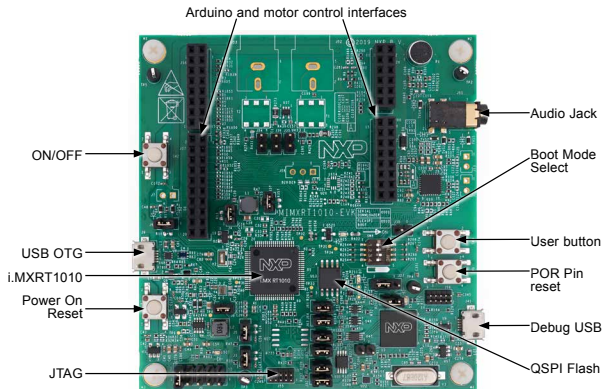
## GET TO KNOW THE i.MX RT1010 EVK

**TABLE 1: BOOT OPTIONS**

BOOT_MODE[1:0](SW8-3 SW8-4)		BOOT Type		
00		Boot From Fuses (The boot ROM code uses the boot eFUSE settings only)		
01		Serial Downloader(Download a Program Image to the chip over USB or UART)		
10		Internal Boot (Execute the boot code from the internal boot ROM)		
11		Reserved		

SW8-1	SW8-2	SW8-3	SW8-4	Boot Device
OFF	OFF	ON	OFF	QSPI FLASH



**Figure 1: Front side of MIMXRT1010-EVK**

## HOW TO GET STARTED

- 1** The evaluation kit is shipped with a MIMXRT1010-EVK and a USB cable (Micro B).
- 2** Connect the MIMXRT1010-EVK board to a PC using the included micro USB cable to USB connector J41.  
The MIMXRT1010 EVK comes preprogrammed with a demo which flashes the LED on the board.
- 3** Explore more out-of-box demos and download software and tools on [www.nxp.com/MIMXRT1010-EVK/startnow](http://www.nxp.com/MIMXRT1010-EVK/startnow).
- 4** Enjoy your design freedom with the MIMXRT1010-EVK.

## SUPPORT

Visit [www.nxp.com/support](http://www.nxp.com/support) for a list of phone numbers within your region.

## WARRANTY

Visit [www.nxp.com/warranty](http://www.nxp.com/warranty) for complete warranty information.



## Get Started

Download installation software and documentation at [www.nxp.com/MIMXRT1010-EVK](http://www.nxp.com/MIMXRT1010-EVK).

---

[www.nxp.com](http://www.nxp.com)

NXP and the NXP logo are trademarks of NXP B.V. All other product or service names are the property of their respective owners. © 2019 NXP B.V.

Document Number: IMXRT1010EVKQSG REV 0  
Agile Number: 926-45852 Rev A