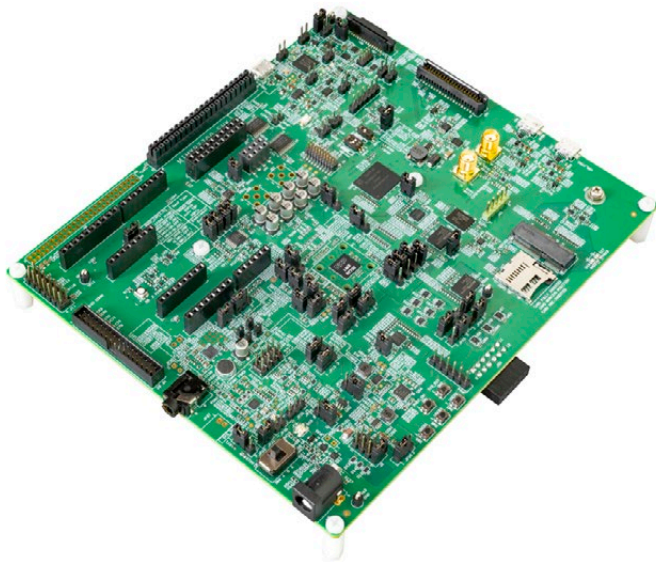




Quick Start Guide

MIMXRT700-EVK

MIMXRT700-EVK



Evaluation kit for the i.MX RT700 MCU

Compute Subsystem, 325MHz Arm® Cortex®-M33, 325MHz Cadence®, Tensilica® HiFi 4 DSP, 325MHz eIQ®, Neutron NPU, Sense Subsystem, 250MHz Arm® Cortex®-M33, 250MHz Cadence®, Tensilica® HiFi 1 DSP

Get to know the MIMXRT700-EVK board

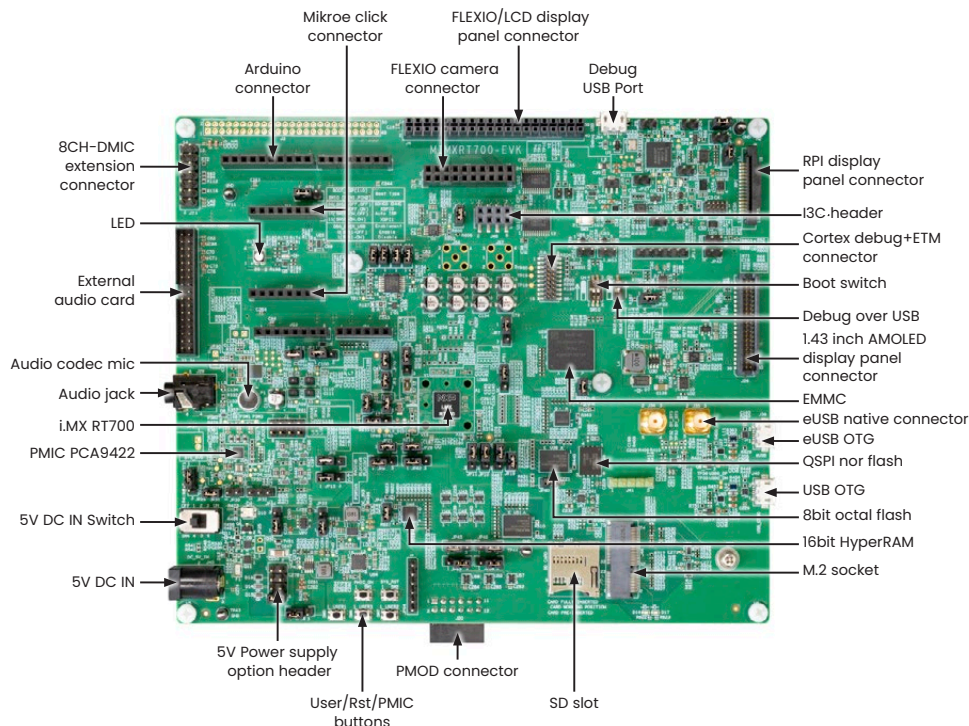


Figure 1: MIMXRT700-EVK board front callouts

Get to know the MIMXRT700-EVK board

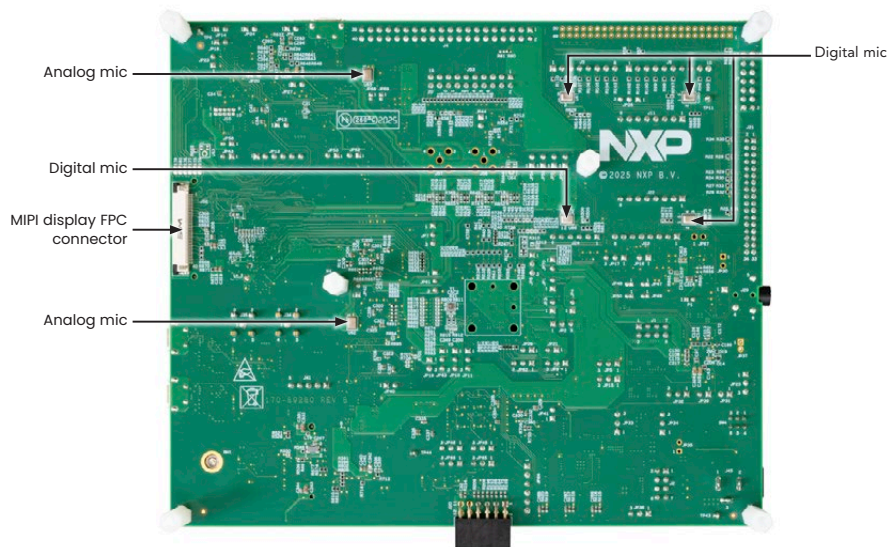


Figure 2: MIMXRT700-EVK board back callouts

How to get started

The evaluation kit is shipped with an MIMXRT700-EVK, a power adapter, a Micro-B USB cable.

1. Plug the Micro-B USB cable into the MIMXRT700-EVK board Debug USB Port (J54). The red power on LED (D4) will illuminate along with the green LED (D2) indicating USB Communications and the red LED (D3) for Status Activity. To power via the 5V DC adapter, switch jumper (J2) from 7-8 to 1-2.
2. The MIMXRT700-EVK board comes preprogrammed with an LED blinky demo that will flash the RGB LED (D5) on the board at a steady rhythm when plugged in.
3. Explore more out-of-box demos and download software and tools at **nxp.com/MIMXRT700-EVK/startnow**.

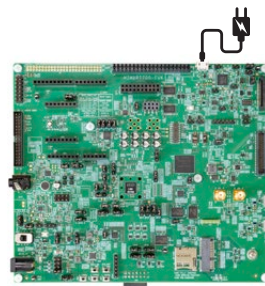


Figure 3: MIMXRT700-EVK USB power adapter cable

Support

Visit **nxp.com/support** for a list of phone numbers within your region.

Warranty

Visit **nxp.com/warranty** for complete warranty information.

nxp.com/MIMXRT700-EVK/startnow

NXP and the NXP logo are trademarks of NXP B.V. All other product or service names are the property of their respective owners. © 2015–2025 NXP B.V.