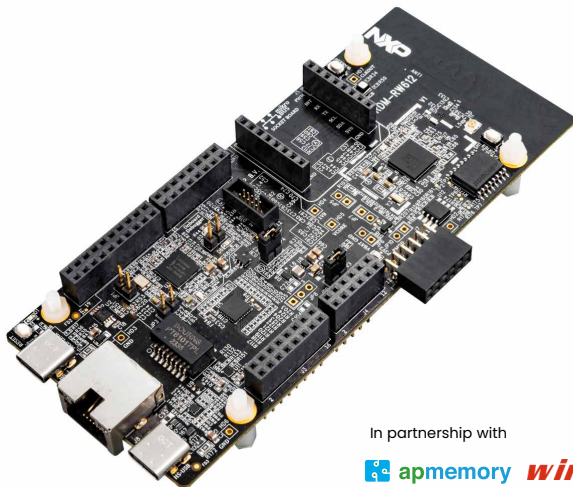




Quick Start Guide  
MCUXpresso developer experience

# FRDM-RW612 Development Board



In partnership with



## Get to know the FRDM-RW612 development board

NXP's MCUXpresso Developer Experience provides you with cost-effective MCU development boards.

Easy I/O access supports expansion board used for fast prototyping and rapid evaluation.

Enjoy your FRDM-RW612!

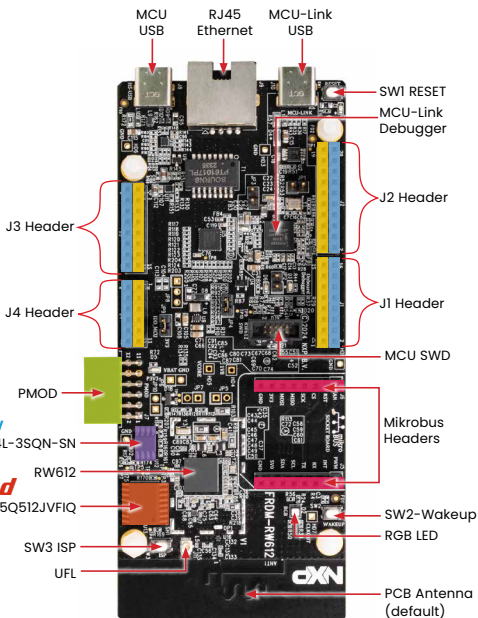
- Arduino® Header
- FRDM Header
- mikroBUS™
- PMOD™
- PSRAM
- QSPI Flash

 **apmemory**

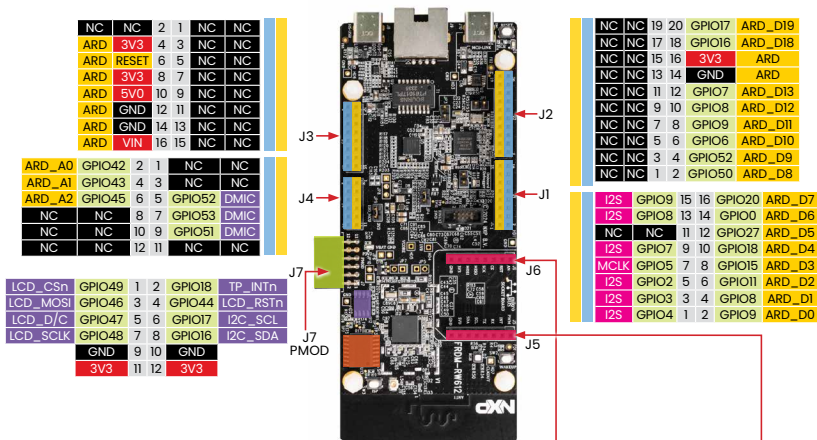
pSRAM APS6404L-3SQN-SN

**winbond**

QSPI flash W25Q512JVFIQ



# Quick Start Guide FRDM-RW612



NC	NC	2	1	NC	NC
ARD	3V3	4	3	NC	NC
ARD	RESET	6	5	NC	NC
ARD	3V3	8	7	NC	NC
ARD	5V0	10	9	NC	NC
ARD	GND	12	11	NC	NC
ARD	GND	14	13	NC	NC
ARD	VIN	16	15	NC	NC

ARD_A0	GPIO42	2	1	NC	NC
ARD_A1	GPIO43	4	3	NC	NC
ARD_A2	GPIO45	6	5	GPIO52	DMIC
NC	NC	8	7	GPIO53	DMIC
NC	NC	10	9	GPIO51	DMIC
NC	NC	12	11	NC	NC

LCD_CSn	GPIO49	1	2	GPIO18	TP_INTn
LCD_MOSI	GPIO46	3	4	GPIO44	LCD_RSTn
LCD_D/C	GPIO47	5	6	GPIO17	I2C_SCL
LGD_SCLK	GPIO48	7	8	GPIO16	I2C_SDA
GND	9	10		GND	
3V3	11	12		3V3	

NC	NC	19	20	GPIO17	ARD_D19
NC	NC	17	18	GPIO16	ARD_D18
NC	NC	15	16	3V3	ARD
NC	NC	13	14	GND	ARD
NC	NC	11	12	GPIO7	ARD_D13
NC	NC	9	10	GPIO8	ARD_D12
NC	NC	7	8	GPIO9	ARD_D11
NC	NC	5	6	GPIO6	ARD_D10
NC	NC	3	4	GPIO52	ARD_D9
NC	NC	1	2	GPIO50	ARD_D8

I2S	GPIO9	15	16	GPIO20	ARD_D7
I2S	GPIO8	13	14	GPIO0	ARD_D6
NC	NC	11	12	GPIO27	ARD_D5
I2S	GPIO7	9	10	GPIO18	ARD_D4
MCLK	GPIO5	7	8	GPIO15	ARD_D3
I2S	GPIO2	5	6	GPIO11	ARD_D2
I2S	GPIO3	3	4	GPIO8	ARD_D1
I2S	GPIO4	1	2	GPIO9	ARD_D0

- Arduino® Header
- FRDM Header
- mikroBUS™
- PMOD™
- PSRAM
- QSPI Flash

MikroBUS					
J6		J5			
GPIO61	1	1	GPIO1		
GPIO19	2	2	GPIO54		
GPIO10	3	3	GPIO2		
GPIO7	4	4	GPIO3		
GPIO8	5	5	GPIO17		
GPIO9	6	6	GPIO16		
3v3	7	7	5v0		
GND	8	8	GND		

# How to get started

## Setup

1. Connect the FRDM-RW612 board to a PC using the USB Type-C® cable.
2. The board comes preprogrammed with a Wi-Fi CLI Demo.
3. Get started at [nxp.com/FRDM-RW612/start](https://nxp.com/FRDM-RW612/start).



## Software and expansion boards

4. Use different headers to connect LCD, sensors, Arduino shields, and more.
5. Access software and tools through our MCUXpresso Developer Experience [nxp.com/MCUXpresso](https://nxp.com/MCUXpresso)
  - Expansion Board Hub [mcuxpresso.nxp.com/eb-hub](https://mcuxpresso.nxp.com/eb-hub) to find add-on boards from NXP and our partners with related MCUXpresso SDK-compatible drivers and examples
  - Application Code Hub [mcuxpresso.nxp.com/appcodehub](https://mcuxpresso.nxp.com/appcodehub) to browse application code examples from our experts to help kick start your project

## Support

Visit [www.nxp.com/support](https://www.nxp.com/support)

[www.nxp.com/FRDM-RW612](https://www.nxp.com/FRDM-RW612)

NXP, the NXP logo and NXP SECURE CONNECTIONS FOR A SMARTER WORLD are trademarks of NXP B.V. All other product or service names are the property of their respective owners. © 2024 NXP B.V.