

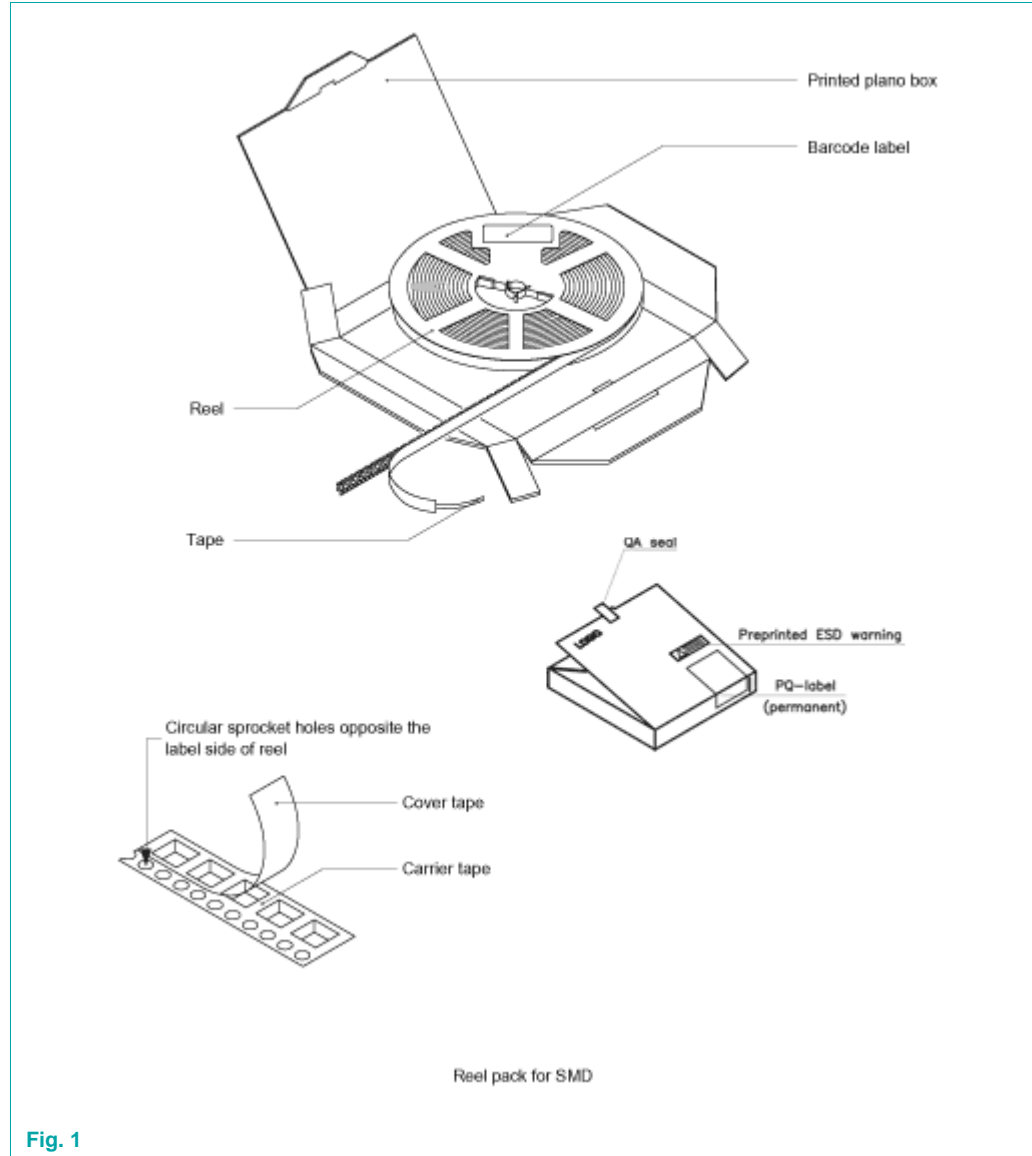
# SOT1039-1

Standard product orientation 12NC ending 115

Rev. 02 — 27 July 2011

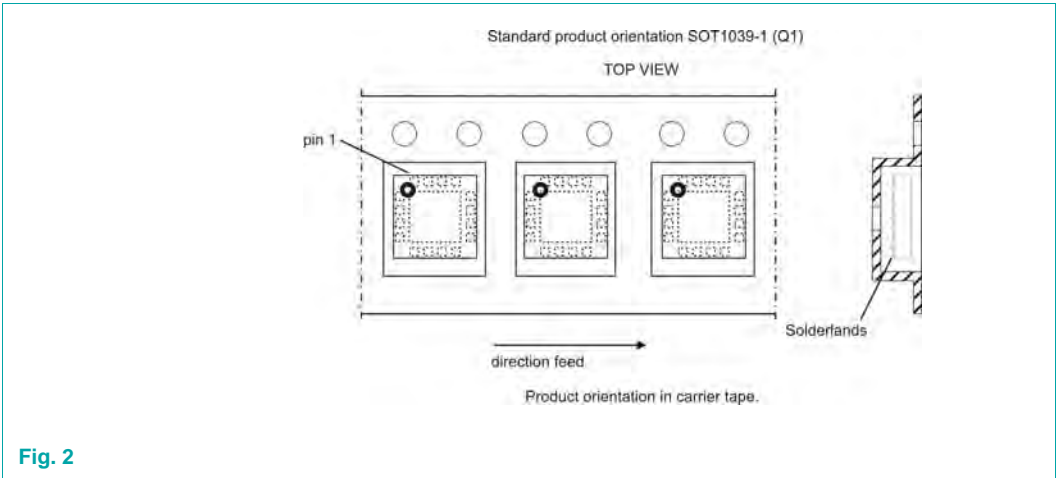
Packing information

## 1. Packing method

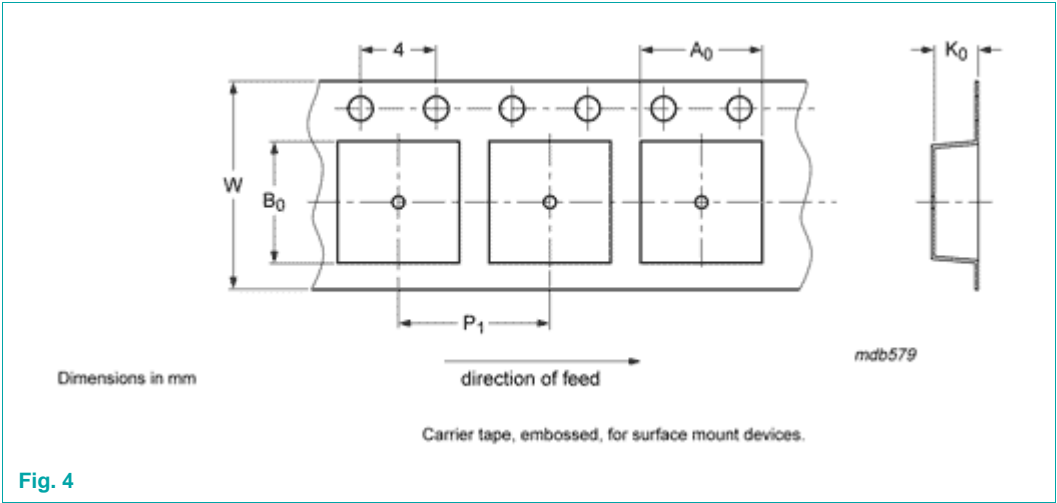


Package version	12NC ending	Reel dimensions d x w (mm)	SPQ/PQ (pcs)	Reels per box	Outer box dimensions l x w x h (mm)
SOT1039-1	115	180 x 12.4	1500	1	189 x 187 x 21

2. Product orientation

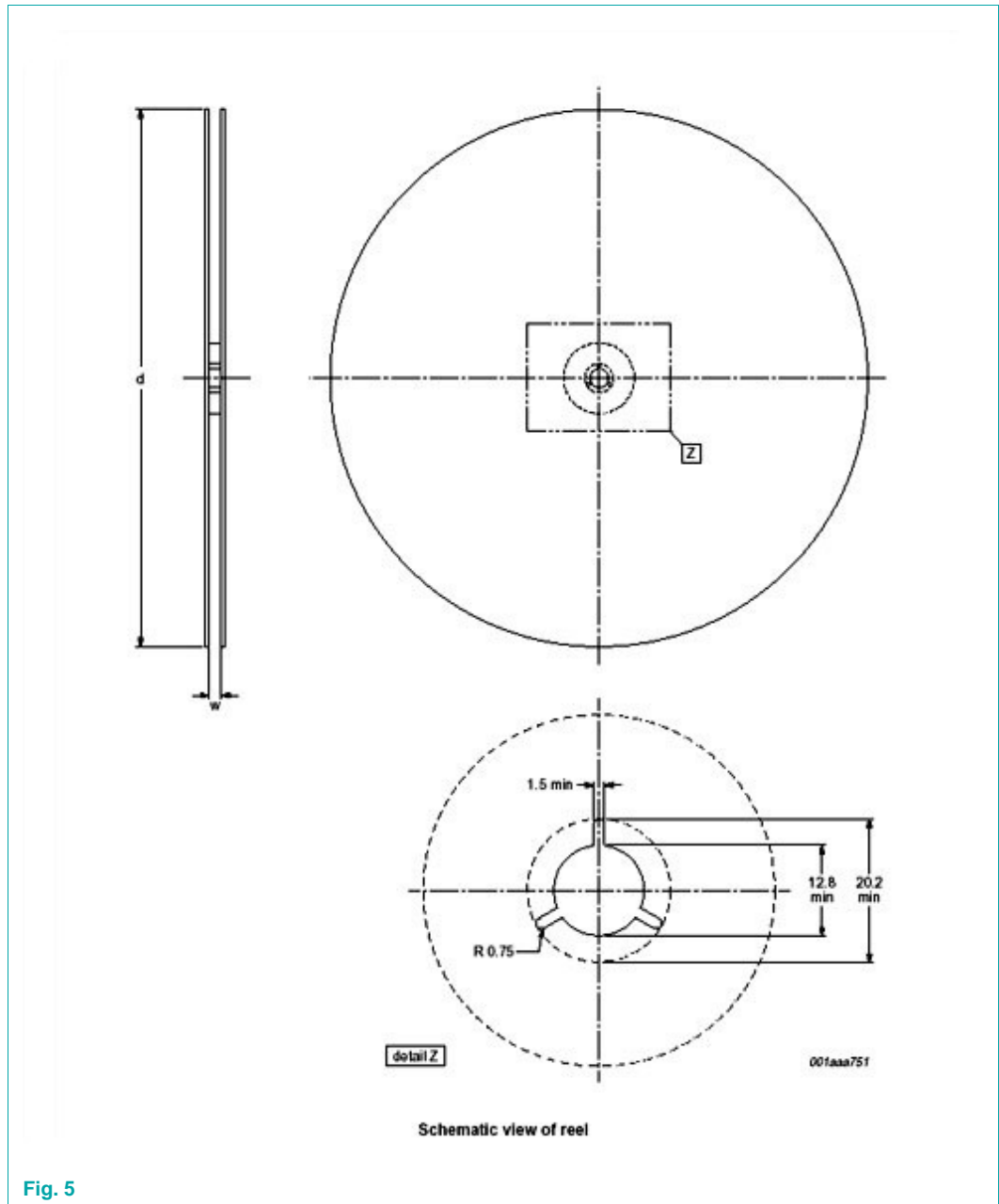


3. Carrier tape dimensions



12NC ending	$A_0$ (mm)	$B_0$ (mm)	$K_0$ (mm)	T (mm)	$P_1$ (mm)	W (mm)
115	3.25	3.25	0.75	-	8.0	12

#### 4. Carrier tape dimensions



Package version	12NC ending	Reel dimensions d x w (mm)	SPQ/PQ (pcs)
SOT1039-1	115	180 x 12.4	1500

5. Barcode label tape and box information

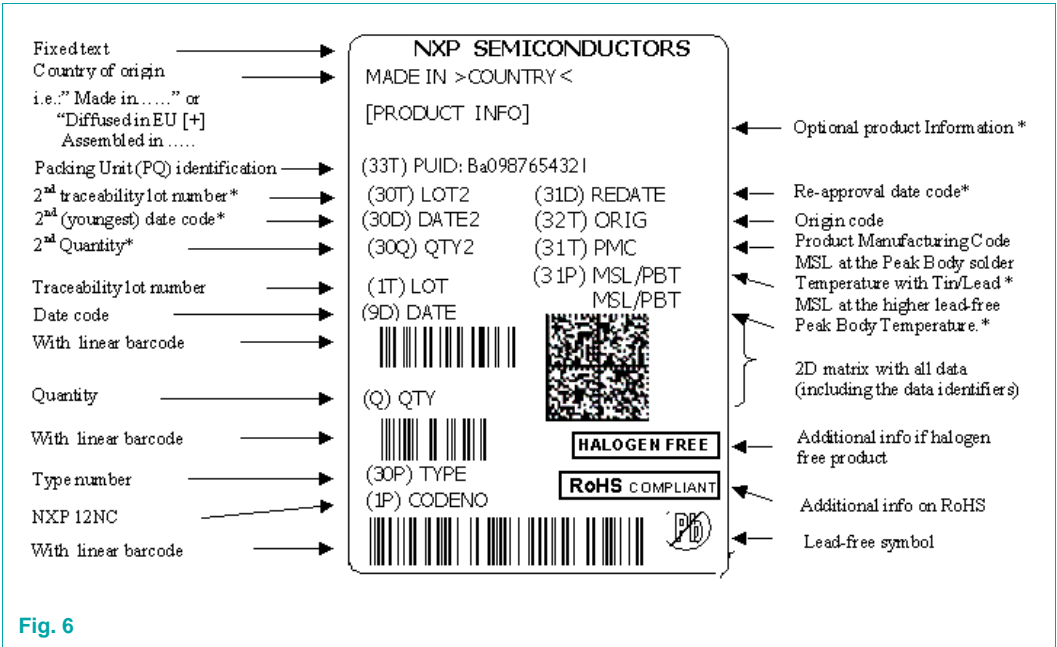


Fig. 6

Label dimensions

l x w (mm)

100 x 75