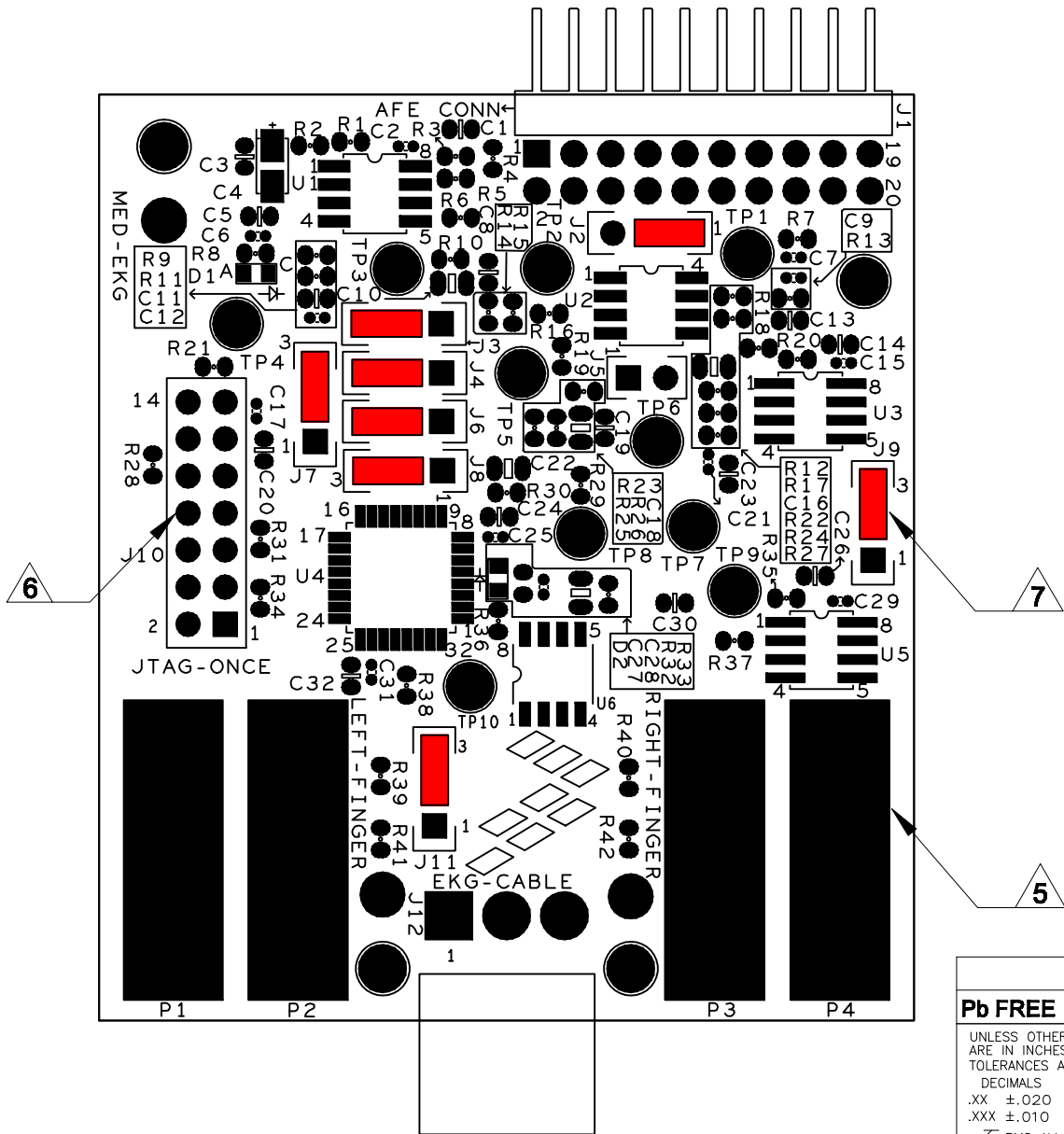


NOTES : TRIANGLE SYMBOLS IDENTIFY NOTES ON THIS DRAWING.

REVISIONS				
ZONE	REV	DESCRIPTION	DATE	APPROVED
	X1	INITIAL RELEASE	03/02/10	JG
	X2	BOARD RESPIN (ECO26929)	03/02/10	MV
	X3	ADDED CONNECTOR J10 INSTRUCTION	06/14/10	MV
	A	UPDATE SHUNTS SETTINGS, FW LABEL	07/29/10	MV




PRIMARY SIDE

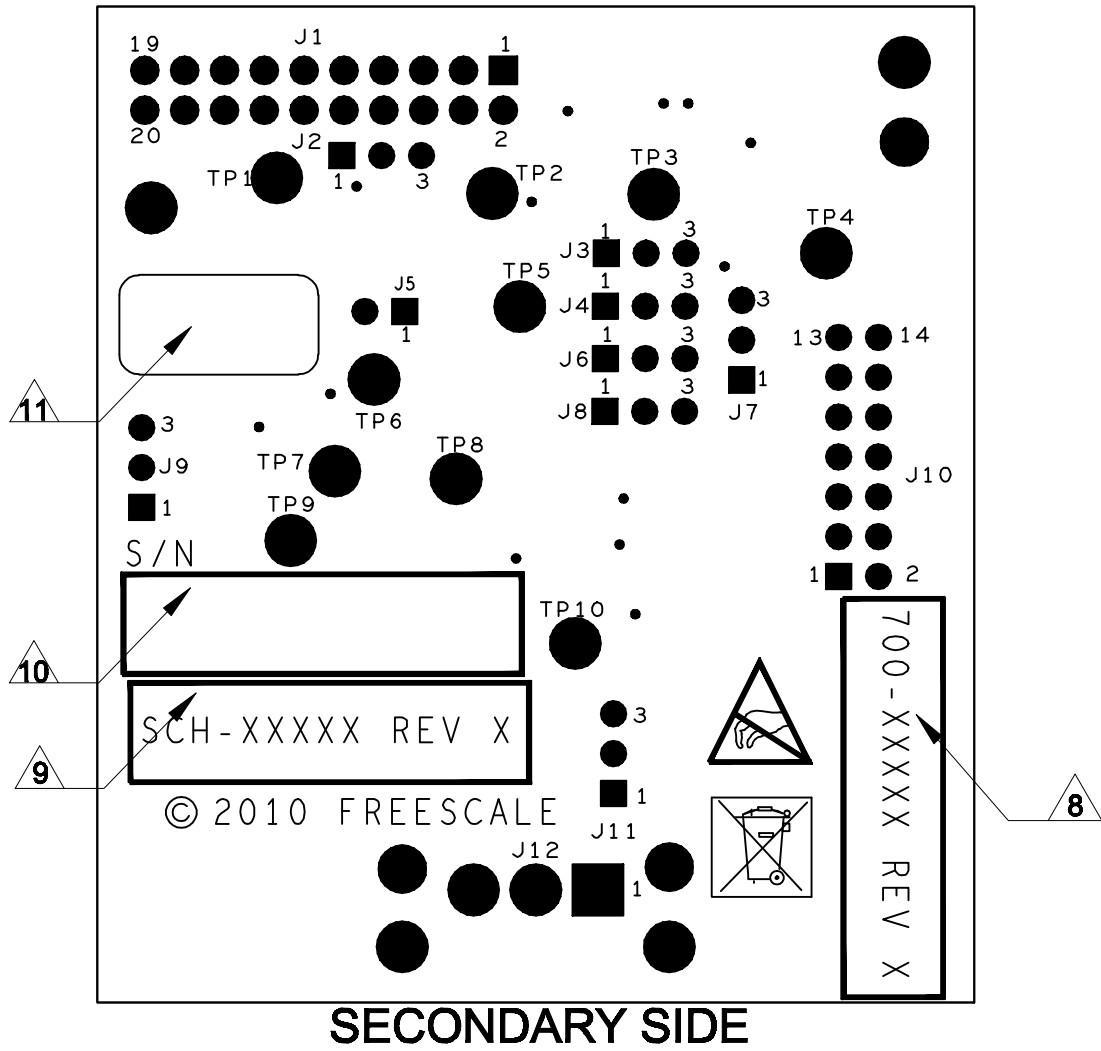
NOTES:

- ALL COMPONENTS MUST BE ABLE TO WITHSTAND THE Pb-FREE ASSEMBLY PROFILES DESCRIBED IN IPC/JEDEC J-STD-020C (LATEST VERSION)
- WORKMANSHIP SHALL CONFORM TO IPC-A-610 (LATEST REVISION) - CLASS 2 STANDARD.
- PART SUBSTITUTION CRITERIA :-
ALL COMPONENT SUBSTITUTIONS MUST BE APPROVED AND DOCUMENTED BY FREESCALE.
- MAXIMUM LEAD PROTRUSION ON PRIMARY AND SECONDARY SIDE OF PRINTED WIRING BOARD IS .100".
- ELECTRODES (P1-P4) MUST BE FREE OF CONTAMINANTS (FLUX RESIDUES, SOLDER, etc.).
- CUT PIN NUMBER 8 OF THE CONNECTOR J10 BEFORE PROGRAMMING.
- PLACE SHUNT (510-75137) PER THE TABLE BELOW (8 PLACES).

DEFAULT SHUNTS TABLE	
J2	1-2
J3	2-3
J4	2-3
J6	2-3
J7	2-3
J8	2-3
J9	2-3
J11	2-3

SOLDER PROCESS			
Pb FREE	<input checked="" type="checkbox"/> YES <input type="checkbox"/> NO		
UNLESS OTHERWISE SPECIFIED DIMENSIONS ARE IN INCHES. TOLERANCES ARE: DECIMALS .XX ±.020 .XXX ±.010 ✓ RMS ALL MACHINED SURFACES. BREAK ALL SHARP EDGES AND CORNERS. REMOVE BURRS. UNDERLINED DIM. NOT TO SCALE. THIRD ANGLE ORTHOGRAPHIC PROJECTION IS USED.		PART NO. 700-26527 THIS DOCUMENT CONTAINS INFORMATION PROPRIETARY TO FREESCALE AND SHALL NOT BE USED FOR ENGINEERING DESIGN, PROCUREMENT OR MANUFACTURE IN WHOLE OR IN PART WITHOUT THE CONSENT OF FREESCALE. --- PUBL (PUBLIC INFORMATION) --- FIOD (FREESCALE INTERNAL USE ONLY) --- FCP (FREESCALE CONFIDENTIAL PROPRIETARY)	 freescalse semiconductor 6501 WILLIAM CANNON DRIVE AUSTIN, TEXAS 78735-5598 USA
MATERIAL		APPROVALS	DATE
FINISH		DRAWN LUIS HEREDIA	07/29/10
HEAT TREAT		CHECKED M. VELASCO	07/29/10
		DESIGN ENGINEER SAMUEL QUIROZ	07/29/10
		TITLE PWB ASSEMBLY MED-EKG	
SIZE B	FILE NAME ASY-26527.DXF	DWG. NO. ASY-26527	REV A
SCALE N/A		DO NOT SCALE DRAWING	
		SHEET	1 OF 2

NOTES : TRIANGLE SYMBOLS IDENTIFY NOTES ON THIS DRAWING.



NOTES (Contd):

8. PLACE PRINTED ASSEMBLY/REVISION LABEL (805-75115) WHERE SHOWN. PRINTED ON THIS LABEL MUST BE THE AGILE REVISION OF THE PWA 700-26527, NOT THE REVISION OF THIS DRAWING.
9. PLACE PRINTED SCH/REVISION LABEL (805-75918) WHERE SHOWN. PRINTED ON THIS LABEL MUST BE THE AGILE REVISION OF THE SCH-26527, NOT THE REVISION OF THIS DRAWING.
10. PLACE PRINTED SERIAL NUMBER LABEL (805-75116) WHERE SHOWN.
11. PLACE PRINTED FIRMWARE/REVISION LABEL (805-77118) WHERE SHOWN. PRINTED ON THIS LABEL MUST BE THE AGILE REVISION OF THE FLASH IMAGE 110-77303, NOT THE REVISION OF THIS DRAWING. (SEE 110-77303 BOM NOTES UNDER "BOM TAB" OF THE FSW-26527).

		freescale semiconductor 6601 WILLIAM CANNON DRIVE AUSTIN, TEXAS 78735-5050 USA	
___ PUBLI (PUBLIC INFORMATION) _X_ FIUD (FREESCALE INTERNAL USE ONLY) ___ FCP (FREESCALE CONFIDENTIAL PROPRIETARY)			
TITLE PWB ASSEMBLY MED-EKG			
SIZE B	FILE NAME ASY-26527.DXF	DWG. NO. ASY-26527	REV A
SCALE	N/A	DO NOT SCALE DRAWING	SHEET 2 OF 2